

Southern Wesleyan University

# FOCUS

*My soul finds rest in God alone; my salvation  
comes from him. He alone is my rock and my  
salvation; he is my fortress, I will never be shaken.*

Psalm 62:1-2



WINTER 2008



## *No matter what may come*

**By David J. Spittal, president  
Southern Wesleyan University**

Since the Coinage Act of 1864, our nation's coins and currency have included the phrase "In God We Trust." Treasury Secretary Salmon Chase directed the U.S. Mint to insert the phrase and with this declaration, "No nation can be strong except in the strength of God, or safe except in His defense." In 1956, Congress passed a joint resolution which established this phrase from our national anthem which declared, "And this be our motto, In God is our trust" as our national theme. Although there have been periods of strong debate and even litigation through the Supreme Court to remove this phrase, it remains as our national motto and a declaration of our dependence on God.

As Christians, we know that God frequently calls his people to trust in him alone. Proverbs challenges us to trust in the Lord with all our hearts and not to lean on our own understanding. God's word challenges us to "not worry about anything" which, in our frantic and over-stressed world, seems to be strangely out of touch with

reality. Is it possible to trust in God completely, fully and without reservation even when surrounded by doubt and fear?

There is a word, "Bitachon," in Hebrew that defines our trust in God as the confident assurance that even in distress and trouble in this life, God does work for good. It suggests that God's people do not surrender or resort to anger but instead draw strength from this assurance. In the midst of the greatest disasters and troubles of this life, our God is always there with us and actively working to take us beyond trouble and to reveal his goodness. In each moment of our lives, God desires to teach us how to trust him more. Doubt and fear weaken, but faith in Jesus Christ will strengthen us even when faced with the most difficult circumstances. The strength of our trust is tested to increase faith, understanding and witness to God's constant faithfulness in our daily lives.

Whether a university, a church or an individual believer, our trust in God does not come from a strong will, positive thinking or an inspiring motto on a coin. Rather, our trust in God is the constant theme of our lives, the solid rock upon which we stand and the basis for an inner faith that burns deeply in our hearts. When we discover that God can be truly trusted with every aspect of our lives, we can abandon a "what if this or that comes" level of thinking and proclaim moment by moment and day by day that "no matter what may come," our God is faithful and true.

Southern Wesleyan University

# FOCUS CONTENTS

WINTER 2008

Focus Magazine is published four times a year by Southern Wesleyan University, Central, SC

**President's Cabinet**

David J. Spittal, President  
R. Keith Iddings, Provost  
W. Joseph Brockinton, V.P. for Student Life  
Marshall L. Atcheson Sr., V.P. for Finance  
James E. Wiggins, V.P. for Development

**Board of Trustees**

Charles L. Joiner, Chair  
Marlin R. Hotle, Vice Chair  
Sherry Alloway, Secretary  
Jerry G. Pence, Ex Officio  
William L. Benton  
Daniel A. Berry  
Louise H. Carlton  
Donald L. Carr  
E. Keith Carroll  
Thomas H. Cayce  
David M. Chambers  
Joseph R. Dongell  
David M. Emery  
Richard L. Emery  
Darl L. Fowler  
J.D. Fralin  
Melvin L. Gentry, Emeritus  
Ronald L. Haithcock  
Ronnie L. Hamilton  
Kenneth R. Heer  
W.D. James, Emeritus  
Lowell E. Jennings, Chair Emeritus  
James H. Johnson, Emeritus  
Kerry Kind, Ex Officio  
Ronald D. Kelly  
Ray A. Lattimore  
Daniel E. LeRoy  
Dan Loggins  
Donald W. Milstead  
George I. Newton, Emeritus  
John Ott  
W. Marshall Rampey, Jr.  
Charles A. Ruff  
M. Lee Schenck  
Henry F. Shigley  
Herschel A. Smith  
Keith W. Smith  
Joseph W. Stallings  
D. Ken Whitener

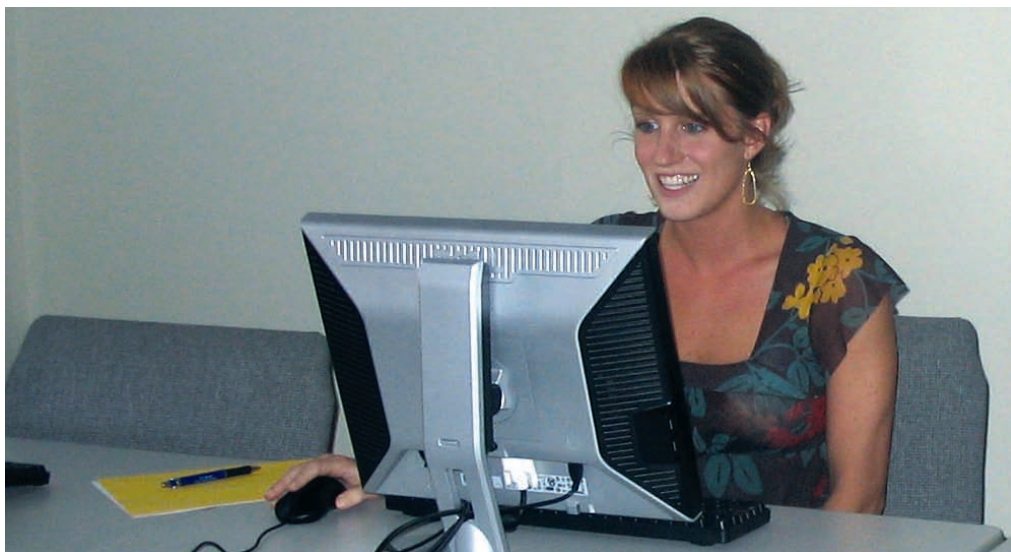
**Alumni Association Officers**

Nancy Edwards, Past President  
Sue Rickman, President  
Janene Bryson, President-Elect  
Winnie Molloseau, Secretary  
Joy Bryant, Treasurer,  
Executive Director and  
Constituent Relations

**Editorial Staff**

Janelle Montgomery  
Ed Welch  
Stephen Hoffmann  
James Wiggins

- 4** Board of Visitors get taste of fine arts
- 5** SWU dedicates Newton Hobson Chapel and Fine Arts Center
- 6** Promise Fund
- 7** Hispanic music, culture in spotlight at SWU
- 8** SWU ties for third in conference-wide academics
- 9** Volleyball heads to Costa Rica
- 10** Alumni Spotlight
- 12** High-flying homecoming at Southern Wesleyan
- 13** Entertainment is in the air at Southern Wesleyan
- 14** FEATURE: Dr. Julius Scipio: 'No one can take away my God'
- 16** Honor Roll of Donors 2007-2008



## At SWU's new location in Columbia

Southern Wesleyan University student Mary Holcomb of Columbia works in a computer lab at the university's new learning center at Pinnacle Point in Columbia. Holcomb, who teaches kindergarten at Bookman Road Elementary School, will be graduating in December of 2008, with her master's degree in education.

*On the cover* Southern Wesleyan University's newest building, Newton Hobson Chapel and Fine Arts Center, is decked out for Christmas. This issue of Focus magazine highlights the achievements of those whose strength comes from their faith in the Lord.



SOUTHERN  
WESLEYAN  
UNIVERSITY

## Board of Visitors gets a taste of fine arts

“Focusing on the Arts” was the theme of the recent meeting of Southern Wesleyan University Board of Visitors held on the university’s campus in Central. The meeting took place in the brand new 47,000-square-foot Newton Hobson Chapel and Fine Arts Center.

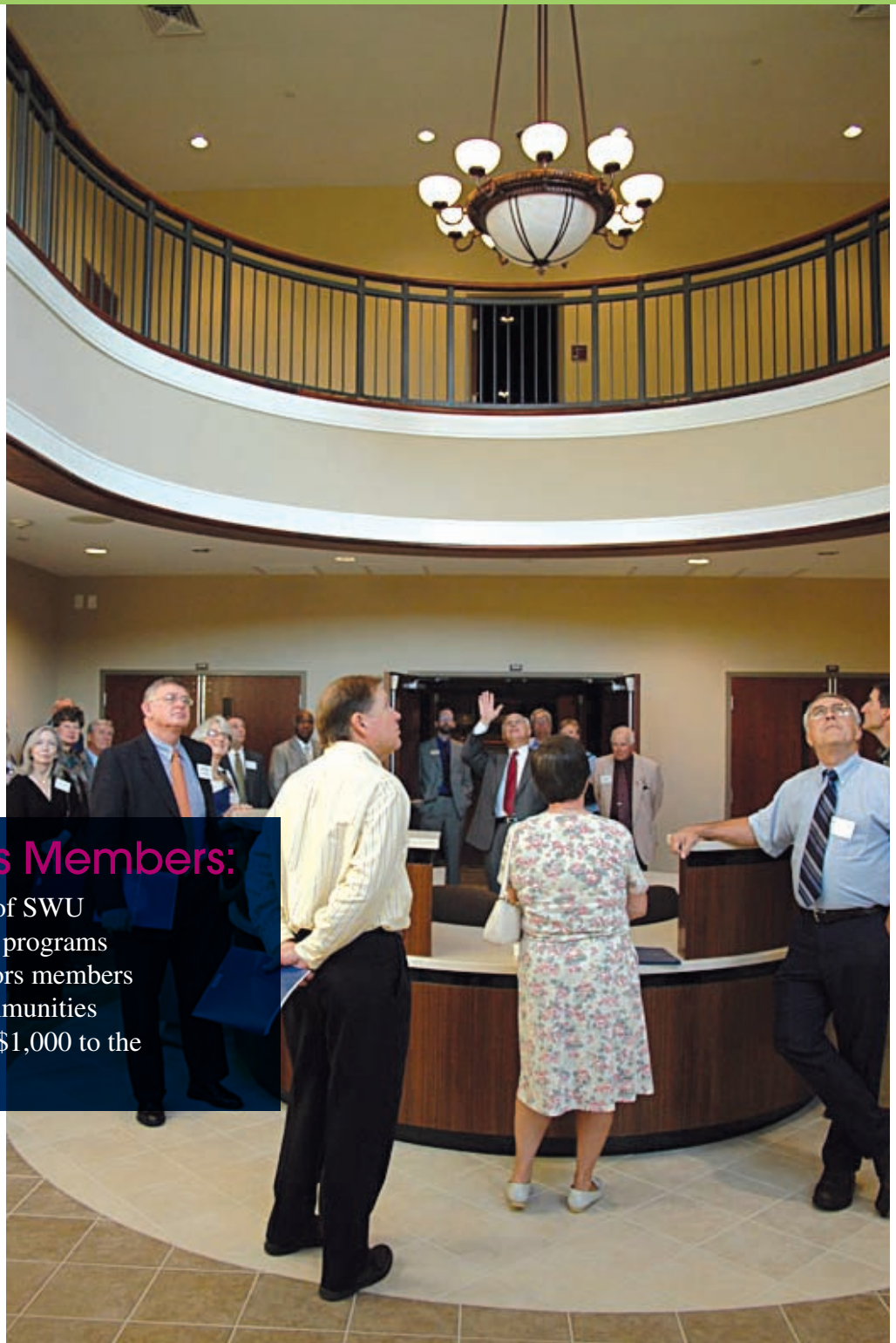
The Board of Visitors is a newly-developed group of alumni and friends who can advise the university president and help advance the goals of Southern Wesleyan. Currently, there are 44 members and the number continues to grow toward a goal of 60 by February 2009.

### SWU’s Board of Visitors Members:

- Assist in achieving the strategic goals of SWU
- Provide feedback for new and existing programs
- Recommend additional Board of Visitors members
- Serve as ambassadors within their communities
- Provide an annual donation of at least \$1,000 to the SWU Promise Fund

During the meeting, Professor Jane Dill, chairman of the Fine Arts Department, gave an overview of the fine arts program, students and faculty. A jazz quartet performed for the board members. Then university president David Spittal led an open discussion with the board members on how Southern Wesleyan University can promote and expand its service as a center for the arts in the community.

The board was treated to a tour of the Newton Hobson Chapel and Fine Arts Center, which includes fine arts



*Southern Wesleyan University President David Spittal points out architectural details inside the lobby of the Newton Hobson Chapel and Fine Arts Center during a tour with board of visitors members.*

offices, teaching studios, practice rooms, rehearsal halls, the spiritual life offices and chapel. The group attended a chapel service and enjoyed a luncheon in Founders’ Hall, where they were treated to music from fine arts students.

The next meeting of the Board of Visitors is scheduled for Thursday, Feb. 26, 2009.

To learn more about the Board of Visitors, please contact Jim Wiggins at (864) 644-5013.

## SWU dedicates

# Newton Hobson Chapel and Fine Arts Center

Southern Wesleyan University dedicated its Newton Hobson Chapel and Fine Arts Center on Oct. 23 in a ceremony that celebrated numerous individuals stepping forward in faith for what God can accomplish.

The new \$5.6 million, 47,000-square-foot facility has a seating capacity of 1,200, including a spacious balcony and stage. It is also the new home for the university's Fine Arts and Spiritual Life departments. Since opening in August, it has already hosted several cultural events and campus chapel services.

"All we had was a dream, no money and a brick," said Dr. David Spittal, president of Southern Wesleyan University. "Now 147,153 bricks later, ponder anew what the Almighty can do when he works through men and women like you. We appreciate all those who gave financially and sacrificially to this project," Spittal remarked in front of an auditorium filled with students, faculty, staff, SWU officials and members of the surrounding community.

Spittal recognized the dedication of the university's trustees for seeing the \$5.6 million project to fruition. He also recognized those whose names appear throughout the new facility, including Faith Newton Hobson, who attended the institution as a young woman and went on to become a beloved educator and close friend to the university. Spittal praised Hobson as a dedicated teacher, school administrator, community leader and friend to many, with an independent spirit, quick humor and a sincere love for people that has enriched all who know her.

"She is a woman of deep love for her savior Jesus Christ, she is

faithful in prayer, persistent in her encouragement of others and a woman of action who seeks after God's own heart," Spittal said.

The speaker for the ceremony was Dr. Julius Scipio, a former SWU trustee and pastor of Royal Baptist Church in Anderson. Scipio received the Order of the Palmetto and the Jefferson Award. He and his son Isaiah established the Elephant Men, an organization that reaches out to troubled young boys. Scipio received the Doctor of Divinity degree when he came to address a commencement at Southern Wesleyan University.

Dr. Scipio shared his story of how God has blessed his life

and ministry during his humble beginnings in rural Darlington County. He cited the influence of his parents and his wife Amanda, and encouraged the audience to let God direct life's path for them.

The university continued the celebration that night with a concert of celebration and praise in the chapel featuring all of the university's musical ensembles, as well as special guests.

For details on upcoming events at Newton Hobson Chapel and Fine Arts Center, go to [www.swu.edu](http://www.swu.edu) or call (864) 644-5408.

*Please see pages 14-15 for a detailed feature on Dr. Scipio.*



*Southern Wesleyan University trustees, community leaders and others joined the campus community in Central on Oct. 23 to celebrate the dedication of Newton Hobson Chapel and Fine Arts Center. Ceremonies were held that morning, and the day concluded with a musical gala featuring musicians from the university's Fine Arts program. Pictured above, Faith Newton Hobson (center) was recognized for her loving dedication to Southern Wesleyan University. To the left of Hobson are J.D. and Loretta Fralin, and to the right are Dr. Thomas Phillippe and his wife Joanne. The Fralins and Phillippes were also recognized for their generous support and dedication to the new facility's construction.*

## PROMISE FUND

### Promise Fund gathers support for SWU students

Southern Wesleyan University's Promise Fund, which supports student scholarships as well as academic and student programs, is well on its way to making the 2008-2009 goal of \$404,000. This goal is challenging, but with prayers and support, it is attainable.

So far this academic year, donors have contributed \$141,338 toward the Promise Fund. You are asked to prayerfully consider financially supporting the Promise Fund. Every gift is important to Southern Wesleyan University.

**Total: \$141,338**

Many students depend on Promise Fund donations to be able to afford to attend the university.

To donate to the Promise Fund, send a check in the envelope enclosed (please write Promise Fund on the memo line), give online by going to [www.swu.edu](http://www.swu.edu) or by contacting Mary Costello at (864) 644-5004 or [mcostello@swu.edu](mailto:mcostello@swu.edu).

#### Donations

Faculty and Staff: \$10,280  
Corporations and Businesses: \$30,750  
Alumni: \$43,494  
Friends: \$19,730  
Churches and Organizations: \$10,184  
Trustees: \$22,249  
Matching Gifts: \$4,650



Erin Fellers of Southern Wesleyan's Development Department presents a cake to WYFF-TV personality Dale Gilbert as Dr. Paul Wood, psychologist and professor emeritus at Southern Wesleyan University, and Darcy Davis of Pickens Country Club look on.

### Golf benefits Southern Wesleyan

Golf teams teed off at the Pickens Country Club for Southern Wesleyan University's annual P.B. Wood Golf Tournament, sponsored by First Citizens Bank. Twenty-five teams participated in this year's tournament. Dale Gilbert, WYFF News 4 weatherman, returned as this year's celebrity golfer. Proceeds from the P.B. Wood Golf Tournament benefits the Promise Fund – the annual fund for Southern Wesleyan University. The tournament raised more than \$21,200 for the fund. The tournament is named for Dr. Paul Wood, a psychologist and professor emeritus at Southern Wesleyan University. The Parkette, of Pickens, donated the post-tournament meal.



### SWU Phonathon dials up support

SWU's Phonathon is off to an impressive start this year and calls will continue until the end of April.

The Phonathon raises money for the Promise Fund, which supports student scholarships as well as academic and student programs. Without the Promise Fund, many students would not be able to afford to attend SWU. The Phonathon goal for the year is \$65,000 and your help is essential.

If you would like to donate but would rather not be called, simply send a check in the enclosed envelope of this issue of Focus and put Promise Fund on the memo line. You can also contact Erin Fellers at (864) 644-5006 or [efellers@swu.edu](mailto:efellers@swu.edu).

# Hispanic music, culture in spotlight at SWU

A day of dramatic and joyful music marked Southern Wesleyan University's celebration of Hispanic Heritage Month recently.

Dr. AnnaMaria Cardinalli-Padilla, classical and flamenco guitarist and singer, presented Hispanic music and culture at the university's Newton Hobson Chapel and Fine Arts Center at the university's campus in Central, S.C. She has performed worldwide, blending music with history and entertainment.

Southern Wesleyan University has had a steady number of Hispanic students for the past five years. "We're trying to educate our campus about the Hispanic culture," said Samantha Wilson, associate vice president of student life at Southern Wesleyan. "It demonstrates that we recognize that there are not just white students on our campus. It's about everyone being exposed to different types of people."

With the Hispanic population being the fastest-growing population in the United States, it is essential that Southern Wesleyan University tune in to that population, Wilson said. Dr. Cardinalli-Padilla said she strives to provide cultural and historical insight through music. At a morning concert she highlighted the many musical and cultural differences throughout the Hispanic world.

Starting with a Spanish flamenco, Dr. Cardinalli-Padilla explained that most musical influences on Hispanic culture came from Spain, with dramatic guitar-thumping and rhythmic strumming filled with intense emotion. She next played a more traditional flamenco. Dr. Cardinalli-Padilla noted how Hispanic music has Islamic influences, a result of 400 years of Muslim rule. She described Spain as geographically separated from the rest of Europe by mountains, so it developed unique music and culture. The guitarist then moved on

to Mexican music, a joyful mixture of cultural influences including German, French and tropical music, as well as Spanish. She concluded with modern Hispanic music, which is a whole new blend of culture and tradition.

Dr. Cardinalli-Padilla also performed at an evening concert, open to the public, in Newton Hobson Chapel and Fine Arts Center.

"Our student body was so amazed at her abilities and her talent. She has an incredible voice," Wilson said.

It is important for Southern Wesleyan University to minister to special populations of students because they may have needs that are culturally different from other students, Wilson said.

"Because of the event, many of our students felt special. It meant so much to our Hispanic students," she said.

The university has a cultural awareness committee to make sure all campus cultures are involved at Southern Wesleyan University. There are other ways the campus community embraces other cultures, she said.

"Our athletic department goes to many Latin American countries to minister to people there," Wilson said. The university also teaches Spanish language classes, as well as education classes on how to teach English as a second language.

"We hope to be able to present this type of Hispanic celebration every year for our entire campus community," Wilson said. "Events like this let us know how creative God is with all the different types of people that exist in the world. It allows us to appreciate that diversity in all its variations."



## Warrior Women's Basketball

Season in progress at time of publication.

### JANUARY 2009

**8 THURS** Berry College Central, S.C. 6 p.m.  
**10 SAT** Shorter College Central, S.C. 2 p.m.

**13 TUES** Auburn-Montg. Montgomery, Ala. 6 p.m.  
**15 THURS** Shorter College Central, S.C. 2 p.m.

**17 SAT** Brewton-Parker Vernon, Ga. 2 p.m.  
**20 TUES** North Gvl. U Central, S.C. 6 p.m.

**22 THURS** Columbia Col. Columbia, S.C. 6 p.m.  
**24 SAT** Brenau College Central, S.C. 2 p.m.

**29 THURS** Lee University Cleveland, Tenn. 6 p.m.  
**31 SAT** Reinhart Central, S.C. 2 p.m.

### FEBRUARY 2009

**3 THURS** North Gvl. U Tigerville, S.C. 6 p.m.  
**5 SAT** Emmanuel Col. Franklin Springs, Ga. 6 p.m.

**7 THURS** Brenau College Gainesville, Ga. 2 p.m.  
**10 TUES** Columbia Col. Central, S.C. 6 p.m.

**12 THURS** Auburn-Montg. Central, S.C. 6 p.m.  
**14 SAT** Morris College Central, S.C. 2 p.m.

**16-18** NCCAA South Regionals TBA/TBA  
**21 SAT** Shorter College Rome, Ga. 2 p.m.

**23 MON** Berry College Rome, Ga. 6 p.m.  
**26 THURS** Southern-Poly Central, S.C. 6 p.m.

**28 SAT** Brewton-Parker Central, S.C. 2 p.m.  
**MARCH 3-6** SSAC Tournament TBD/TBD

## SWU ties for third in conference-wide academics

The Southern States Athletic Conference All-Academic Team for fall sports has been announced with Southern Wesleyan University having 23 members, a tie for third in the conference.

In order to qualify for the SSAC All-Academic Team, a student-athlete must have a cumulative grade point average of 3.25 or higher and be a sophomore, junior or senior. Finishing ahead of Southern Wesleyan was Berry College with 35 members and Shorter College with 25 members. Lee University's 23 members tied with Southern Wesleyan.

*Below is a list of SWU student-athletes, by team, who have been named to the SSAC All-Academic Team for the Fall 2008 season.*

### Men's Cross Country

Travis Eiler and Daniel Furr

### Women's Cross Country

Melissa Bolt, Marie Oxendine and Tammy White

### Men's Soccer

Will Austin, Zach Derr, Palmer Dill, Bryan Horton, Mitch McKay, Ian McKenzie, Joseph Page, Stephen Tolan and Nick Willis

### Women's Soccer

Caitlin Blake, Katla Gudjonsdottir, Carissa McNab, Katie Sullivan and Jackie Tubb

### Volleyball

Jessica Angeli, Heather Craker, Lindsey Torgerson and Kaitlin Wolfe



*Southern Wesleyan University Academic All-Americans, from left, are front row: Mitch McKay, Joseph Page, Stephen Tolan, Nick Willis and Ian McKenzie; second row: Jackie Tubb, Palmer Dill, Zach Derr, Will Austin and Bryan Horton; third row: Jessica Angeli, Kaitlin Wolfe, Marie Oxendine, Melissa Bolt and Tammy White; fourth row: Heather Craker, Lindsey Torgerson, Travis Eiler, Daniel Furr and Carissa McNabb. Not pictured are Katie Sullivan, Katla Gundsjonsdottir and Caitlin Blake.*





## Volleyball team heads to Costa Rica

Partnering with Score International, the Warriors traded in their normal routine of double sessions for rice and beans. The team landed in the capital city of San Jose. The plans for the trip included seven different ministry projects, four evenings of volleyball against local teams, lots of sightseeing and shopping and a unique excursion. Highlights from the trip include:

**Ministry Projects:** The Warriors hosted two volleyball clinics, passed out tracts to people in San Jose, visited an orphanage, participated in a Vacation Bible School, distributed food to homes and helped clean a building on Score International's new property. At the end of each of the clinics, some of the Warriors shared brief testimonies with the young people and then one of the representatives shared about Jesus Christ for a few minutes.

**Volleyball:** After arriving in Costa Rica, the Warriors played volleyball for four consecutive evenings, beginning on Wednesday. The record for the week was 4-0-1 with the Warriors winning 12 out of the 16 sets they played. Playing in the gyms of Costa Rica was different from what the team is used

to in the United States. Three of the four gyms had cement floors and one gym only had three walls.

**Zip line:** The team hiked up a mountain and then rode a series of five zip lines back down the mountain. Those who went described the experience using words like "amazing and breathtaking." Michelle Hayes, a senior from Pickens, S.C., used the native Spanish language to describe her zip line experience, saying it was "muy, muy bien," which translated into English means "very, very good."

"I am so proud of my team for how they handled what was an incredibly busy and intense week of ministry and volleyball," said head coach Derek Schmitt. "The days were extremely long and tiring, but every day they met each challenge enthusiastically. Not only were we able to minister to the people of Costa Rica, but the people of Costa Rica definitely ministered to all of us."

For a detailed account of the trip, read Coach Schmitt's blog at <http://swuathletics.athleticsite.com/article.asp?articleID=625>.

## Warrior Men's Basketball

Season in progress at time of publication.

### JANUARY 2009

3 SAT Faulkner U* Montgomery, Ala. 4 p.m.	8 THURS Berry College* Central, S.C. 8 p.m.
10 SAT Shorter College* Central, S.C. 5 p.m.	13 TUES AUM* Montgomery, Ala. 8 p.m.
15 THURS Southern Poly* Marietta, Ga. 7:30 p.m.	17 SAT Brewton-Parker Mt. Vernon, Ga. 4 p.m.
20 TUES Lee University* Columbia, S.C. 8 p.m.	23 FRI Mtn. State U Beckley, W.Va. 7 p.m.
29 THURS Lee University* Cleveland, Tenn. 8 p.m.	31 SAT Reinhart Col.* Central, S.C. 4 p.m.

### FEBRUARY 2009

3 TUES North Gvl. U Tigerville, S.C. 8 p.m.	5 THURS Emmanuel Col. Franklin Springs, Ga. 8 p.m.
12 THURS AUM* Central, S.C. 8 p.m.	14 SAT Faulkner U* Central, S.C. 4 p.m.
19 THURS Mtn. State U Central, S.C. 7 p.m.	21 SAT Shorter College Rome, Ga. 2 p.m.
23 MON Berry College* Rome, Ga. 8 p.m.	26 THURS Southern-Poly* Central, S.C. 8 p.m.

### MARCH 2009

4 WED SSAC Tournament TBD/TBD
-------------------------------------

\* indicates SSAC event

## NEWS FLASHES



**The 1968 reunion class** joined other classmates during SWU homecoming in Central this fall. Pictured, from left, on the front row are **Helen Aunspauch Kershaw**, **Carol Brewer Sinnamon**, **Carol Childs Milstead** and **Peggy Davenport Mobley**; middle row, **Faith Leh Hutcheson**, **Mary Faye Hastings Todd**, **Donna Kindschi Baker** and **Rev. Robert Taylor**; back row, **Dr. Ray Barnwell**.

## '87



Southern Wesleyan University Athletic Hall of Fame member **Debbie Holcombe** has received state recognition for exhibiting excellence in the field of physical education, to which she's been dedicated for 20 years. Holcombe has served the last nine years as a physical education teacher at

Byrnes High School. Holcombe is this year's recipient of the state Founders Award for Teaching Excellence at the high school level. Holcombe earned the high school level Founders Award for Teaching Excellence, an honor presented by the South Carolina Association of Physical Education and Sport.

## '92

**Barry Putnam**, facilities services director of Wesley Commons, became one of the select group of professionals nationwide to earn the Certified Aging-in-Place Specialist designation, identifying him as one of the industry's top professionals with skills and knowledge specific to home modifications for aging-in-place. Putnam earned his bachelor's degree in human resources. Wesley Commons is a continuing care retirement community in Greenwood, S.C.

## '08



Southern Wesleyan graduate **Lauren Hughey** packs to return to teach in Ankara, Turkey. Her classes began August 25. She says, "It is still an honor to serve our Lord as I live for him in Turkey." To see her latest photos and updates, go to: [http://www.swu.edu/alumni/alumni\\_hughey.htm](http://www.swu.edu/alumni/alumni_hughey.htm)

## Professor contributes to book on new evangelical media



Southern Wesleyan University communications professor **Dr. Paul Creasman** is among a group of scholars nationwide who contributed to "Understanding Evangelical Media: The Changing Face of Christian Communication," a new book published by InterVarsity Press. In the book, Creasman explains why younger evangelicals are tuning out traditional Christian radio stations and are tuning in podcasts, recorded music and online evangelical radio stations. In order

to survive in the new evangelical world, Creasman contends that evangelical radio might even have to reinvent itself “from the outside in, rather than inside out.”

## Vice President of Student Life



**Samantha Wilson**, associate vice president for student life at Southern Wesleyan University, published an article on the Web site Studentaffairs.com this past year about the influence of technology on college student values. Wilson’s article explores how popular culture has influenced this generation of students through TV reality shows, music and the Internet. Wilson’s article also explores the challenges of reaching out to individuals who use text messaging and social networking to communicate. StudentAffairs.com is a Web site that provides online resources for college student affairs professionals. The article can be found online at [http://studentaffairs.com/ejournal/Fall\\_2007/index.html](http://studentaffairs.com/ejournal/Fall_2007/index.html).

## WEDDINGS

'02

**Michael Levern Burgess** and Aurelia Lavette Cooper were married on June 28, 2008.

'05/'06



**Brice and Brittany (Wilson) Bickel** were married on March 29, 2008.

'06/'08



**Scott Edward Bryson and Laura Claire Fipps** were married on June 14, 2008.

## STUDENTS

**Anita Rashan Dennis** and Corey Usher were married on Aug. 9, 2008.

**Sarah Selby Johnson** and Daniel Little were married on July 19, 2008.

**Heather Jane Stancil** and Gabriel Nelson Gardner were married on May 23, 2008.

## OBITUARIES

'35

**Nell Evans Bowling** of Greenwood, S.C., Oct. 12, 2008.

'40

**Ressie Mae Porter Hudgens** of Pickens, S.C., Oct. 14, 2008.

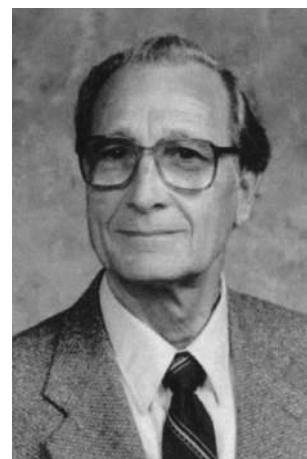
'52

**Joseph Ledwell** of Flossmoore, Ill., Oct. 12, 2008.

'67

**Sheila Abel Loux** of Johnstown, N.Y., Sept. 19, 2008.

## Pastor, evangelist, teacher & administrator



**Dr. Herbert Henry Dongell** went home to be with the Lord on Oct. 23, 2008. He pastored eight different churches from 1946-2003. He served as an evangelist at numerous

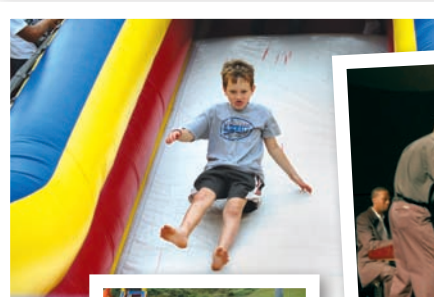
churches and camp meetings from 1942-1995, taught at United Wesleyan College, Central Wesleyan College (now Southern Wesleyan University) and then served as an adjunct professor in the LEAP program at Southern Wesleyan University.

Dr. Dongell also served in administrative positions for the Middle Atlantic States Conference, headed the Department of Religion at CWC, was a member of the S.C. District Camp Meeting Boards and was a Delegate to General Conference. His awards were CWC Yearbook Dedicattee, Teacher of the Year, Ministerial Students' Plaque of Appreciation for 22 years of dedicated service and Volunteer Community Service and Nursing Home Visitation.

HOMECOMING 2008

# The Year of Jubilee!

Southern Wesleyan University Homecoming  
September 26-29, 2008



## High-flying homecoming at Southern Wesleyan University

SWU alumni and friends took to the air in a hot air balloon during Homecoming '08 at Southern Wesleyan University in Central. The balloon was provided by ReMax. Homecoming festivities included carriage rides through the campus, a homecoming chapel service at Newton Hobson Chapel and Fine Arts Center, reunion luncheons and a barbecue supper. There was also a men's and women's cross country meet as well as a volleyball game in which the Lady Warriors defeated Brenau 3-1. The women's soccer team lost to North Greenville University 1-0 and the men's soccer team defeated NGU 1-0. Amanda Kinney, a senior Human Services major from Matthews, N.C., was crowned Homecoming Queen and Phillip Fritts, a senior Communication major from Burlington, N.C., was crowned Homecoming King.



# Entertainment is in the air at Southern Wesleyan

## January 19

### Dr. Gregory Broughton, tenor

Dr. Gregory Broughton, associate professor of voice at the University of Georgia, has had major solo engagements including the Seattle Symphony, the Toledo Symphony, the Memphis Symphony and the Savannah Symphony. Broughton has also enjoyed many operatic engagements. This recital begins at 7:30 p.m. in Newton Hobson Chapel and Fine Arts Center on the university's campus in Central. Tickets are \$10 for adults and \$5 for children under age 12. Call (864) 644-5191 for tickets and details. Discounts are available for groups of 10 or more. SWU faculty, staff and students enter free with valid ID but tickets must be reserved. Tickets will also be available at the door.

## February 2 Tarradiddle Players present "Commedia Aladdin"

Continuing their tradition of bringing classic stories to the stage with a hilarious twist, the Tarradiddle Players return to Southern Wesleyan University. Hop on a magic carpet with Aladdin as he summons the powerful Genie of the Lamp and changes his fortunes forever. The show begins at 7:30 p.m. in Newton Hobson Chapel and Fine Arts Center on the university's campus in Central. Tickets are \$10 for adults and \$5 for children under age 12. Call (864) 644-5191 for tickets and details. Discounts are available for groups of 10 or more. SWU faculty, staff and students enter free with valid ID but tickets must be reserved. Tickets will also be available at the door.

**March 19-21 "SWUsical" - A tribute to musical theatre shows at Southern Wesleyan University** Celebrating more than 20 years of musical theatre, "SWUsical" will

delight audiences as they reminisce. Past performers and directors will be recognized throughout the show with video clips and pictures. A memorabilia display recognizing alumni of past shows will welcome all who attend. The show begins at 7:30 p.m. each night in the Newton Hobson Chapel and Fine Arts Center auditorium on the university's campus in Central. Tickets are \$10 for adults and \$5 for children under age 12. Call (864) 644-5191 for tickets and details. Discounts are available for groups of 10 or more. SWU faculty, staff and students enter free with valid ID but tickets must be reserved. Tickets will also be available at the door.

## April 4 Greenville Concert Band, directed by Dr. Darryl Jachens

Since its founding in 1972, the Greenville Concert Band has brought to Greenville audiences a unique blend of musicianship, enthusiasm and community spirit. Each season, the group gives several major concerts that focus on classics of the concert band repertoire. The group also supports the community by playing at hospitals, retirement homes, shopping centers and schools. Dr. Darryl Jachens, professor of music and coordinator of studies in music at Southern Wesleyan University, has been with the Greenville Concert Band for 13 years. The program begins at 7:30 p.m. in Newton Hobson Chapel and Fine Arts Center. Tickets are \$10 for adults and \$5 for children under age 12. Call (864) 644-5191 for tickets and details. Discounts are available for groups of 10 or more. SWU faculty, staff and students enter free with valid ID but tickets must be reserved. Tickets will also be available at the door.

**April 16 Music Majors Honors Recital** Selected Southern Wesleyan University music majors

are featured in this evening performance in the auditorium of Newton Hobson Chapel and Fine Arts Center. The concert is free and begins at 7:30 p.m. Call (864) 644-5404 for details.

## April 19 Music Majors Formal Recital

Southern Wesleyan University music majors are featured in this Sunday afternoon performance in the auditorium of Newton Hobson Chapel and Fine Arts Center. The concert begins at 3 p.m. and is free. Call (864) 644-5404 for details.

## April 21 SWU Wind Ensemble

The Southern Wesleyan University Wind Ensemble will perform a variety of music and offer great entertainment. The performance begins at 7:30 p.m. in the Newton Hobson Chapel and Fine Arts Center auditorium. Admission is free. Call (864) 644-5404 for details.

## April 26 "Messiah," featuring SWU Concert Choir and local church choirs

The Southern Wesleyan Concert Choir, along with local church choirs, will perform Handel's "Messiah." The concert will be held in the auditorium of Newton Hobson Chapel and Fine Arts Center at 3:00 p.m. Admission is free. Call (864) 644-5404 for details.

## April 30 SWU Jazz Ensemble

The Southern Wesleyan Jazz Ensemble and guest soloists set the mood with an enjoyable and energetic evening of swing, rock, funk and Latin music. This group is always a crowd pleaser! The show begins at 7:30 p.m. in the Newton Hobson Chapel and Fine Arts Center auditorium. Admission is free. Call (864) 644-5404 for details.



## *Dr. Julius Scipio: 'No one can take away my God'*

**A**t age 5, Dr. Julius Scipio knew he wanted to preach.

Today, at age 80, he is more passionate than ever about his ministry and about encouraging others to embrace life as he does.

"When I was five years old, I knew I wanted to be a preacher and nothing has deterred me," Dr. Scipio said. "My father told me that if you find something you really like to do, you'll never work a day in your life."

Dr. Scipio was the featured speaker at the recent dedication of Southern Wesleyan University's Newton Hobson Chapel and Fine Arts Center at the campus in Central. University President Dr. David Spittal cited the pastor as a dear friend of the university.

"Southern Wesleyan University was honored to have Dr. Scipio serve as a member of our board of trustees and to recognize his ministry. We were pleased to award him the doctor of divinity degree," Dr. Spittal said.

As the fifth of 10 children in rural Darlington County, S.C., Dr. Scipio was raised by parents who taught the value of hard work and faith in God.

"We had prayer every morning before they made the fire," he said. The family farmed 130 acres of family land, with his uncle's farm next door.

Dr. Scipio earned his bachelor's degree at Claflin University and took graduate classes at Gammon Theological Seminary in Atlanta. Both of Dr. Scipio's grandfathers were ministers and his father's father, in particular, encouraged him to become a minister, calling him "his little preacher."

Dr. Scipio has pastored churches all over South Carolina and conducted a special ministry to migrant workers in Florida. Today, Dr. Scipio is pastor of Royal Baptist Church in Anderson.

"I've never stopped preaching. There were times when I didn't have a church, but I never stopped preaching," he said.

The most renowned project Dr. Scipio has led was The Elephant Men, a juvenile rehabilitation program in Pickens County. The project, established with the help of Dr. Scipio's son Isaiah, took troubled youth from the juvenile delinquent lists and showed them love, trust and respect.

"Everyone was saying, 'these kids are going wild. Somebody needs to do something,' I said, 'Well, I'm somebody,'" he said.

Dr. Scipio, his wife and son welcomed the children into their home, took them on cultural outings and even took them out to dinner so they could practice their table manners.

"We got those kids out of trouble. Where they were using taxes, now they're paying taxes," he said. The program cleared the juvenile

records of all the “problem youth” in Pickens County at the time and changed more than 100 lives.

As a result, Dr. Scipio received the Order of the Palmetto from Gov. Carroll Campbell. In 1995, he also received the Jefferson Award for public service on a local as well as a national level. Other Jefferson awardees that year included Sen. Strom Thurmond, Paul Newman and Sen. Joe Biden. In 1997, the award celebrated 25 years of recognizing excellence and they announced their “best of the best” award among all of the annual recipients. Dr. Scipio captured that award, as well.

“I’ve been so blessed. I know what God can do,” Dr. Scipio said.

His face lights up as he talks about his wife of 54 years, Amanda. Though she is now living in a nursing home, Dr. Scipio lives two blocks away and visits her daily. They still hold hands.

“I’ve had a 54-year honeymoon. I’m as excited about my relationship with her as I was when I met her – even more so,” he said.

The Scipios have a daughter and three sons who all attended college, as well as a fourth son who died of leukemia at the age of 10.

These days, Dr. Scipio sees a special need to encourage and reassure people who are having difficulty with their finances.

“I have yet to see a U-Haul behind a hearse,” he said. “God will bring us out of this. No one can take away my God.

“You can trust God. He will never leave you or forsake you,” Dr. Scipio said. “God is calling us back to be caretakers to those who are hurting.” Neither financial challenges nor



*Dr. Julius Scipio, pastor of Royal Baptist Church in Anderson and former Southern Wesleyan University trustee, was the guest speaker for the university's dedication ceremony for the new Newton Hobson Chapel and Fine Arts Center. The \$5.6 million, 47,000-square-foot facility has a seating capacity of 1,200, including a spacious balcony and stage. It is also the new home for the university's Fine Arts and Spiritual Life departments.*

health concerns can shake Dr. Scipio's outlook.

“My faith is so strong. Nothing bothers me. I mean nothing,” he said.

In July, Dr. Scipio was diagnosed with colon cancer, but he hasn't let it slow him down. His 6-foot-8-inch frame is unbowed.

“I'm not scared of cancer. I might have cancer, but cancer doesn't

have me,” he said. In spite of his undergoing chemotherapy, Dr. Scipio hasn't had any pain or sickness. He hasn't even lost any of his hair, Dr. Scipio points out with a broad smile.

“I'm going on and doing everything I've ever done. I haven't skipped a beat. I'm just having fun,” he said. “Life is about attitude. I just know that's a secret to it.”



# Honor Roll of Donors 2007 2008

Members of the President's Club, the Trustees Club, the Legacy Club and the Citation Club are partnering with Southern Wesleyan University in a significant way. Leadership giving and prayer support continue to make it possible to deliver a quality Christian education to the students Southern Wesleyan University serves.

## Citation Club

**Giving Level \$10,000 Plus**

- Mr. Don L. Carr
- Mr. and Mrs. Mike Chambers
- Mr. Robert M. Clayton
- Mr. Sam B. Cole
- Community Foundation of the Napa Valley, Napa, CA
- Mr. and Mrs. Robert L. Edwards
- Edwards Auto Sales Inc., Walhalla, SC
- Doctors Malcolm and Lois Ellis
- Ms. Daisy Dean Cleveland Estate
- Mrs. Lucille H. Phaup Estate
- First Citizens Bank, Clemson, SC
- Mr. and Mrs. J.D. Fralin
- Mr. and Mrs. Donald Garner
- Mrs. Janet Carriker Green
- Mr. and Mrs. Timothy A. Hamby
- Mr. and Mrs. Charles Joiner
- Ms. Virginia H. Kayler
- Doctors Chuck and Betty Mealy
- Dr. and Mrs. Thomas E. Phillippe, Sr.
- Rev. and Mrs. Jerry D. Rott
- Signature Architects, Clemson, SC
- South Carolina Independent Colleges & Universities, Columbia, SC
- Dr. and Mrs. David Spittal
- Sunland Distribution Co., Inc., Greenville, SC
- Mr. and Mrs. Ken Whitener
- Whitener Pettigrew & Weaver, Clemson, SC

- Ron and Laura N. Black
- Edward and Lisa Thornberry Bright
- Joe and Willa Brockinton
- Ms. Mabry Dennis
- Hubert and Bonnie Taylor Hicks
- Lowell and Mary Faith Gibson Jennings
- Dale & Julia Lappin
- Dr. and Mrs. Bob R. Nash
- Dr. and Mrs. John M. Newby
- Mr. and Mrs. George I. Newton
- Ram Technologies, Greer, SC
- Rev. and Mrs. W. Marshall Rampey
- Mr. and Mrs. Henry F. Shigley
- Mr. Keith W. Smith
- South Carolina Wesleyan Women, Westminster, SC
- Mr. and Mrs. Gary Vancannon
- Wachovia Bank Charitable F M, Winston Salem, NC

## Trustees Club

**Giving Level \$2,500-4,999.99**

- Mr. Scott Akey
- Marty and Ruth Cox Atcheson
- Mr. and Mrs. Ron L. Brank
- Mr. and Mrs. Glenn L. Bridges
- Brooksville Wesleyan Church, FL
- Dr. and Mrs. E. Keith Carroll
- Mrs. Jeanette Mize Childs
- D. L. Scurry Foundation, Columbia, SC
- Jeff and Sheryl Karns Dennis
- Emmanuel Wesleyan Church, Roanoke, VA
- First Wesleyan Church, Central, SC
- Darl and Mary Cockman Fowler
- Galax Wesleyan Church, VA

- Mrs. Dorothy H. Hardin
- Mr. and Mrs. J. Paul Hilson
- Mrs. Faith Newton Hobson
- Mrs. Hardie Davis Medders
- Don and Carol Childs Milstead
- Mrs. Florence M. Parker
- Patrick Square LLC, St. Petersburg, FL
- Pepsi Bottling Group Inc., Columbia, SC
- Chad and Sherri Peters
- Ms. Sharon E. Pierce
- Mrs. Willyne Correll Sanders
- Jimmy and Anne Campbell Sheriff
- Walt and Carol B. Sinnamon
- Herschel and Evangeline Pressley Smith
- Robert E. and Julia A. Smith
- Southern Wesleyan Auxiliary, Central, SC
- Mr. and Mrs. Levon Stack
- Charles and Deanna Putney Tegen
- The Duke Energy Foundation, Princeton, NJ
- The UPS Foundation, Atlanta, GA
- W & W Development Company, Inc., Seneca, SC
- Wal-Mart Foundation, Bentonville, AR
- James and Dora Coile Wiggins
- Mrs. Winnie V. Williams
- Mr. David Wilson
- D. Clifton and Ernstena Phillips Parker Wood

## President's Club

**Giving Level \$1,000-2,499.99**

- Mr. Michael and Judge Sherry Fowler Alloway
- JD and Audrey Andrews
- Gary M. and Yvonne H. Arrowood
- Atchison Transportation Service Inc., Spartanburg, SC
- Baseball and Books, Central, SC

- Basic Concepts, Sandy Springs, SC
- Bob and Judy Black
- Mrs. Sue Binns Black
- Mrs. Sandra Bolick
- Mr. and Mrs. J. Phillip Bowers
- Brevard Wesleyan Church, NC
- Jim and Angela Davis Bross
- Mrs. Lillian G. Bryant
- Robin and Joy Dodson Bryant
- Mr. and Mrs. W.C. Bussa
- Dr. Louise H. Carlton
- Mr. Thomas H. Cayce
- Jon and Laura Childs
- Cliffs Management Services LLC, Travelers Rest, SC
- C. Roy and Pat Collins
- Cornell Dubilier Marketing, Inc., Liberty, SC
- Don and Mary Floyd Costello
- Custom Decorative Mouldings Inc., Greenwood, DE
- Mr. and Mrs. J. Daniel Davidson
- Billy and Jo Ann McCoy Davis
- Mr. Phillip C. Edmonds
- Lewis and Nancy Posey Edwards
- Rev. and Mrs. David Emery
- Mr. Frank C. Miller Estate
- Paul and Ruth Faulkenberry
- Brad and Pam Lane Fipps
- GDG Investments LLC, Williamsburg, VA
- Mr. and Mrs. Larry Gentry
- Dr. and Mrs. Melvin L. Gentry
- Goldstein Charity Golf Tournament, Clemson, SC
- Mr. Russell J. Guffee
- Mrs. Wanda Brown Hagood
- Hayworth Wesleyan Church Faith Promise, High Point, NC

## Legacy Club

**Giving Level \$5,000-9,999.99**

- Bank of America, Charlotte, NC



*Southern Wesleyan University appreciates members of the President's Club for joining its mission. To become a member of the President's Club, please call Mary Costello, executive director for development, at (864) 644-5004 or 1-800-282-8798, ext. 5004.*

Mr. Larry Hendrix  
High Point Area Wesleyan Men, NC  
Dr. and Mrs. Marlin R. Hotle  
Dr. and Mrs. R. Keith Iddings  
John Powell Investments, Walhalla, SC  
Mrs. Carmella Crawley Johnson Coleman  
Drs. Billy R. and Gloria D. Jones  
Rev. and Mrs. David Livingston Keith  
Dr. and Mrs. Ronald D. Kelly  
Jimmy and Bobbie Speer Kimble  
Rev. and Mrs. Kerry Kind  
Wilton and Debbie King  
Mr. and Mrs. Ray G. Klumb  
Rev. and Mrs. Daniel E. LeRoy  
Daniel and Jill Lappin Loggins  
Mr. and Mrs. Charles W. 'Sonny' Lusk  
Dr. and Mrs. Wilbur J. Mahony  
Dr. Nancy B. Mann  
Mr. and Mrs. Daniel J. Maw  
Mr. and Mrs. Tommy R. McBride  
Mr. and Mrs. Rock L. McCaskill  
Mr. Charles Oneal McKeown  
Dr. Sandra F. McLendon  
Ms. Marlene B. McWhorter  
James H. and Sheryl Medders  
Gordon and Frances Miller  
Warren and Evelyn Morgan  
Mrs. Yvonne H. Morgan  
MST Concrete Products, Inc., Central, SC  
Dr. Jerry Neal  
Mr. and Mrs. John Newby  
Mr. Tim Newton  
Newton Law Firm, Clemson, SC  
Rev. John William Ott  
Ms. Debra E. Payton  
Pickens View Wesleyan Women, SC  
Pizza Pro, Central, SC  
Rev. and Mrs. T. Wayne Preusz  
Mr. and Mrs. Hershell A. Pruitt  
Buddy and Joan Wood Rampey  
Mickey and Betty Sue Johnson Rickman  
Hal and Lillian Andrews Robbins  
Mr. and Mrs. John B. Ross  
SC Department of Public Safety, Columbia, SC  
Mr. and Mrs. M. Lee Schenck  
James and Ruth Surbrook Smith  
State Farm Co. Foundation, Bloomington, IL  
Mr. and Mrs. Leonard D. Stowe  
The Wesleyan Church Shenandoah District,  
Saluda, VA  
E.B. and Mary Will Wood Thomas  
Mr. and Mrs. Mack Thomason  
Herbert and Shelby Thompson  
Ms. Frances Tomlin  
Dr. and Mrs. Brian Torgerson  
Trinity Wesleyan Church  
Mr. and Mrs. Edward Van Romer  
Mr. and Mrs. Weston W. Warren  
Dr. Harold M. Waters  
Jonathon and Karen Young Watts  
Mrs. Barbara Watts  
Dr. and Mrs. Byron K. Webb  
Mr. and Mrs. Michael D. Whitney  
Mr. and Mrs. John Williams  
Mr. Coville Winsor  
Mrs. Ruth S. Woo  
Don and Sally Schram Wood  
Paul and Christine Wood  
Dr. Katie Wood-Ray  
Fred and Deana Woodworth

Bank of America NA, Providence, RI  
Mr. and Mrs. Daniel Barton  
Mr. and Mrs. Bill L. Benton  
Blue Ridge Electric Coop. / Blue Ridge  
Security Systems, Pickens, SC  
Mr. and Mrs. Michael J. Bonham  
Jim and Barbara B. Bross  
Mrs. Lisa Gatlin Bryant  
Center for Scholarship Admin., Inc., Taylors, SC  
CFS, Easley, SC  
Ms. Margaret Alice Childs  
Christ Church Episcopal School, Greenville, SC  
Mr. and Mrs. Tain-Geeng Tony Chu  
Ms. Catherine Sutton Cloy  
Keith and Jamella Harris Connor  
Cornerstone Community Church, Charlottesville, VA  
Richard and Kimberly M. Cotton  
Ray and Liz Crawford  
Denton Wesleyan Camp, Pasadena, MD  
Mr. and Mrs. Wayne Derr  
Ken and Jane P. Dill  
Dow Chemical Company, Midland, MI  
Jason and Erin Elizabeth Fellers  
Firestone Wesleyan Church, Gastonia, NC  
First Wesleyan Church, Bessemer City, NC  
First Wesleyan Church, Kannapolis, NC  
Fletcher Anderson Insurance Agency Inc., Central, SC  
Mr. and Mrs. John D. Fralin  
Mr. and Mrs. Richard F. Gettings  
Dr. Mari Gonlag  
Ms. Ruth J. Gonlag  
Greater Ohio District Wesleyan Ministry  
Center, Galloway, OH  
Mr. and Mrs. Dewey Gunnoe  
Ron and Susan Davis Haithcock  
Mr. and Mrs. Jacob C. Hart  
Dr. and Mrs. Steven J. Hayduk  
Dr. Kenneth R. Heer  
HFMA SC Chapter, Mount Pleasant, SC  
Ms. Deborah L. Holcombe  
Larry and Susan Cash Hooks  
Mr. Eddie V. Horne  
Talmadge and Naomi Davis Hughey  
Indexx Inc. Printing Solutions, Greenville, SC  
Rev. and Mrs. Bill D. James  
Dr. and Mrs. Paul B. Jordan  
Mr. Carl A. Kerby  
Martin and Faye C. LaBar  
Liberty Wesleyan Church, Summerfield, NC  
Mr. Dale Linvill  
Mr. Charles Watts Little, Sr.  
Mrs. Charlotte Freeman Maness  
Mr. and Mrs. Claude V. Marchbanks  
Dr. and Mrs. Roger W. McKenzie  
Mentone Wesleyan Church, AL  
Dr. Paul Rees Mills  
Ms. Michelle Lee Outlaw  
Bill and Peggy Overstreet  
Mr. and Mrs. James R. Owens  
Pacific Southwest District, La Mesa, CA  
Pickens View Wesleyan Church, SC  
Piedmont Pest Control, Laurens, SC  
Mr. and Mrs. David H. Ramsey  
Real Estate Development Services LLC,  
Greenville, SC  
Retirement Planning Consultants Inc., Ocala, FL  
Mrs. Evelyn Tucker Rickman  
Riverview Camp for Girls, Mentone, AL  
Mr. and Mrs. James T. Roberts  
Ms. Nanette G. Sackett  
Ms. Priscilla Sanders

South Coastal District of the Wesleyan Church,  
Conyers, GA  
Ms. Elizabeth G. Suri  
Texas Louisiana District of the Wesleyan Church,  
Duncanville, TX  
The Robert J. Fewell Charitable Rem Trust  
The Wesleyan Church Kansas District,  
Topeka, KS  
Wayne and Bonnie Tippey  
Tri State District of the Wesleyan Church,  
Bartlesville, OK  
Triad Auto Specialty Inc., Greensboro, NC  
Verizon Foundation, New York, NY  
Mr. and Mrs. Chris R. Williams  
Dr. and Mrs. Earle L. Wilson  
Wisconsin District Wesleyan Church,  
Wisconsin Rapids, WI  
WKFM South Carolina District, Piedmont, SC  
Mr. and Mrs. James H. Wolfe  
Ms. Sharren E. Wolff

## Century Club

Giving Level \$100-499.99

Mr. Frank H. Adams  
Mr. and Mrs. Joseph F. Adams  
Mrs. Elaine L. Addis  
Mrs. Joni Lesley Addis  
Affordable Cleaning Service, Inc., Shelby, NC  
Ms. Betty J. Agnew  
Dan and Anne Alberts  
David and Sandra Haithcock Albertson  
Mr. and Mrs. Richard J. Alderman  
Lonnie J. and Debra Kauffman Alewine  
Mr. Leonard E. Alexander  
Mrs. Nancy Sparks Alexander  
Alexander and Patricia Mudrak Trust  
Mr. and Mrs. D. Scott Allen  
Mr. and Mrs. William C. Allen  
Mr. and Mrs. Eddie Allred  
Mr. and Mrs. Douglas N. Allsop  
Ms. Belen Ambriz  
Am-Liner East Inc., Sterling, VA  
Mr. Joshua David Anderson  
Mr. and Mrs. David Wayne Andrews  
Fred and Sondra McNurlin Andrews  
Mr. and Mrs. Harold B. Andrews  
Ms. Jess Erin Angeli  
Dr. and Mrs. Thomas E. Armiger  
Ms. Myra A. Armistead  
Mr. and Mrs. Ed and Miriam Arnold  
Mrs. Lucretia Arnold  
Artic Air Inc., Palatka, FL  
Mr. David J. Arute  
Dr. John and Renee Weisenburg Atcheson  
Joseph and Elizabeth Payseur Atcheson  
Mr. and Mrs. Neal Atkinson  
Mrs. Laura Tossey Austin  
Ms. Irene Ayres  
Dr. Stephen F. Babby  
Mr. Kenneth Bailey  
Phillip and Martha Faye Brazier Baily  
Mr. and Mrs. Donald F. Baker  
Mrs. Elizabeth Joiner Baker  
Mr. John Michael Baker  
Tony and Donna Kindschi Baker  
Mrs. Gordon H. Bane  
E. Stanley Banker and Evelyn Elliott Banker  
Ms. Megan Anne Barnard  
Ray and Sue Duke Barnwell  
Mrs. Betty McLeskey Baskin

Mr. and Mrs. David E. Bates  
Mrs. Linda P. Batten  
Ken and Jane Bauer  
Mr. Douglas L. Bayse  
Mrs. Yvonne Wilcox Beasley  
Mr. and Mrs. Charles R. Beaver  
Mr. and Mrs. Terry M. Beckom  
Randy and Tiffany M. Belcher  
Ms. Charlene Gordon Ben  
Mr. Roland Ben  
Mrs. Mary Ross Bender  
Mr. and Mrs. John O. Benson  
Mr. and Mrs. David Bethune  
Dr. Jim C. Blackburn  
Mr. and Mrs. David Paul Blackburn  
Ms. Lauren Ashley Blackwell  
Mr. and Mrs. James Blake  
Mr. Rex James Blankenship  
Mr. and Mrs. Joseph H. Blankenship  
Mr. Douglas B. Boan  
Mr. and Mrs. Paul D. Boel  
Mr. Jonathan T. Bolding  
Mr. Tim Bolding  
Danny and Nancy S. Boone  
Dr. Margaret May Boyer  
Mr. and Mrs. James L. Brackett  
Mr. Randy Lee Bradshaw  
Mr. and Mrs. Arlan T. Brady  
Dr. and Mrs. Ronald R. Brannon  
Robert and Corrie Milstead Brayerton  
Mr. and Mrs. Roger Breazeale  
Mr. and Mrs. William H. Bridwell  
Mr. Red Brigman  
Mr. and Mrs. J. Edward Britt  
Devon and Leanne Black Broome  
Mr. James M. Brown  
Ms. Joyce Albright Brown  
Mr. Keith D. Brown  
Alan and Libba Porter Brownell  
Mr. Arthur L. Bruce  
Mrs. Missy T. Bryant  
Edward and Janene Jennings Bryson  
Mr. and Mrs. Harold A. Bryson  
Capt. and Mrs. Wilbur Burgin  
Mrs. Pam Nelson Burnett  
Mr. and Mrs. James P. Burns  
Mr. Scott D. Burrow  
Ms. Gisele Butler  
Mr. and Mrs. Seth G. Butner  
Mrs. Joan Bell Byrum  
C&S Electronics, Central, SC  
Rev. and Mrs. Arthur J. Calhoon  
John P. and JoAnn Calhoon  
Mr. Carl W. Callicutt  
Mrs. Peggy Ann Camp  
Mr. Albert M. Campbell  
Ms. Carolyn McKnight Cantrell  
Dr. and Mrs. Don R. Campbell  
Mr. and Mrs. Franklin J. Cantrell  
Rev. and Mrs. James M. Capps  
Carithres Real Estate Inc., Anderson, SC  
Carolina Ad Specialty, Lyman, SC  
Carolina Datacom LLC, Greenville, SC  
Rev. Richard Carr  
Brett and Ginger Cash  
Mr. and Mrs. Max G. Cash  
Howard and Patricia Castle  
Jonathan and Sandra R. Catron  
Ms. Luann Bolt Certain  
Mrs. Wanda Staley Chalmers  
Dr. Shelley Ann Chapman  
Mr. G. Harold Chapman  
Mr. and Mrs. JC Chapman  
Mrs. Melissa Moore Chastain  
Dr. Ronald A. Cheney  
Danny and Melissa Stansell Childs  
Mr. Jon O. Childs, Jr.  
Rev. Thomas C. Childs  
Mrs. Doris C. McCracken Clark

## University Club

Giving Level \$500-999.99

Abercrombie & Alexander Inc., Easley, SC  
Ken and Tammie McJunkin Alexander  
Mr. and Mrs. Lee R. Allen  
American Family Day Corporation, Marietta, GA

# 2007-2008 DONORS

Mr. Lawrence A. Clayton  
 Mr. and Mrs. William T. Clayton  
 Mr. and Mrs. William R. Cochrane  
 Mr. and Mrs. W. Lee Cockerill  
 Mr. John H. Cole Jr.  
 Ms. Mary Coltrane  
 Harry and Elizabeth Mobley Connor  
 Ms. Ann Massey Coogler  
 Mrs. Helen L. Cooley  
 Ms. Krista M. Coots  
 William and Barbara Copeland  
 Mrs. Tammie Stephens Cotran  
 Jerry and Joan B. Crain  
 Ms. Heather Marie Craker  
 Mr. and Mrs. Lester G. Crayton  
 Mr. and Mrs. Donnie G. Crofts  
 Mr. A B Cumbie  
 Mr. and Mrs. Richard D. Curtis  
 Mr. and Mrs. Roy Allison Dalton  
 Mrs. Billie Faye Wyatt Davis  
 Morris and Vinelle Phillips Davis  
 Mr. and Mrs. Robert L. Davis  
 Rev. Donald A. Dawalt  
 Mr. C. Grayson Day  
 Mrs. Jean Jackson Day  
 Mr. and Mrs. Ansel W. Deadwyler  
 Mr. Barry Dean  
 Mr. and Mrs. Roy A. DeBolt  
 Deluca Toyota, Ocala, FL  
 Ms. Irene W. Deneau  
 Mr. Charldon Ward Dennis  
 Douglas and Pamela Green Dennis  
 Mr. and Mrs. Samuel G. Denton  
 Ms. Jessica Nichole Derr  
 Mr. Meredith G. Derr  
 Ken and Rachel Sawyer Dickens  
 Ms. Jennifer A. Dickey  
 Mr. and Mrs. John H. Dickey  
 Dillon Oil Service Inc, Dillon, SC  
 Mr. RB Dilworth  
 Mr. Daniel W. Dinger  
 Diversified Electric & Installation, Franklinville, NC  
 Mr. Vick B. Dixon  
 Mr. Peter H. Dongell  
 Mr. Donnie R. Doster  
 Mr. and Mrs. Scott Dover  
 D-Sign, Seneca, SC  
 Duke Energy, Greenville, SC  
 Mr. and Mrs. J.L. Dunn  
 Mr. James Dykhouse, CPA  
 Dr. and Mrs. Roland Keith East  
 Mr. Jody Eckert  
 ECP, Easley, SC  
 Dr. and Mrs. Mark R. Elliott  
 Mr. and Mrs. Timothy Robert Elrod  
 Dr. and Mrs. O.D. Emery  
 Dr. and Mrs. Richard L. Emery  
 Ms. Tana L. England  
 Mr. Kevin Todd Etheredge  
 Dr. Marie Evatt  
 Mrs. Martha S. Evatt  
 Mr. and Mrs. Robert Evatt  
 Ms. Sallie Evatt  
 Mr. Richard Fabrizio  
 Ms. Joyce E. Fair-Ryals  
 Faith Wesleyan Church, Greensboro, NC  
 Mr. and Mrs. Gregory L. Fant  
 Mr. Joel Farlow  
 Harry and Wanda Farmer  
 Fellowship Baptist Church, Ocala, FL  
 Mr. and Mrs. Malcolm M. Ferguson  
 Dean and Joanie Fichtel  
 Dan and Carol Finch  
 Ms. Marilyn S. Finger  
 First Baptist Church, Clemson, SC  
 Five Points Medical Center, Asheboro, NC  
 Mr. and Mrs. Timothy J. Flanagan  
 Mr. Ray Flasch  
 Mrs. Verline Folwell

Forms & Supply Inc., Charlotte, NC  
 Mr. Robert J. Fortier  
 Mrs. Syvilla Masters Fortune  
 Mrs. Monica K. Fowler  
 Mr. and Mrs. Dean Fowler  
 Mr. and Mrs. Darl L. Fowler, Jr.  
 Mr. and Mrs. Thomas S. Frederick  
 Mr. and Mrs. Paul Freeland  
 Scott and Dana Dralle Frost  
 Mr. and Mrs. David O. Funderburk  
 Mrs. Martha Mitchell Funnell  
 G W Walker Antiques, Spring Valley, CA  
 Mr. and Mrs. George B. Garman  
 Danny and Rhonda Garrett  
 Mr. and Mrs. T. Ed Garrison  
 Mrs. Susan Poore Gentry  
 T. Al and Debbie Gilbert  
 Mrs. Brenda Freeman Goodman  
 Marvin and Joyce Gordon  
 Mr. and Mrs. Don Grant  
 W. Charles and Jeanette Stamey Graves  
 Kenneth Neal and Joan Allison Gray  
 Mr. Talmadge Gray  
 Dr. and Mrs. Velon H. Gray  
 Ms. Lellaree Greene  
 Mr. James L. Greenway  
 Mr. Christopher A. Guest  
 Ms. Elinor M. Guinn  
 Ms. Doris R. Gunsalus  
 Dr. and Mrs. Harold R. Gunsalus  
 Mr. and Mrs. James R. Gurley  
 Mr. and Mrs. Jim Gurley  
 Mr. and Mrs. Frank J. Hackl  
 Dr. Lee M. Haines  
 Bob and Jan Haithcock  
 Mr. and Mrs. James Harold Haithcock  
 Ms. Sherry D. Haithcock  
 Mrs. Betsy Davis Hansen  
 Thomas and Lisa Bross Harding  
 Johnnie and Raylene R. Harrell, III  
 Mr. and Mrs. Douglas Harris  
 Mr. and Mrs. Roy C. Harris  
 Mrs. Billie Faye Morrison Harvey  
 Mr. and Mrs. Joseph F. Hayes  
 Mrs. Vicki Kennemore Hayes  
 Mr. and Mrs. Marvin Haygood  
 Mr. and Mrs. John R. Head  
 Ms. Kay E. Hedge  
 Mr. and Mrs. Nathan Hege  
 Neal and Sandy Hegeman  
 Mrs. Thelma R. Hendren  
 Mrs. Zelma Higgins  
 High Pine Wesleyan Church, Asheboro, NC  
 Mr. and Mrs. C.T. Hill  
 Mr. and Mrs. Howard Hill  
 R. Kedar and Paula Hodges  
 Mr. and Mrs. Timothy Hoffman  
 Mr. and Mrs. Robert P. Holcombe  
 Mr. and Mrs. Wesley G. Holcombe  
 Mr. Edgar O. Holder  
 Mrs. Ira J. Holliday  
 Mrs. Rebecca Hardy Holt  
 Mr. Perry C. Hopkins  
 Horace Mann, Springfield, IL  
 Mrs. Elaine Ford House  
 Mr. and Mrs. Roger W. House  
 Mr. Donald E. Howard  
 Mr. and Mrs. William L. Howard  
 Mr. and Mrs. Robert Hughes  
 Mr. and Mrs. David Humphries  
 Mr. Olin D. Hunter  
 Don and Gail Cox Hurlburt  
 Mrs. Ellen Williams Hurst  
 Mr. and Mrs. Henry A. Hutcheson  
 Dr. and Mrs. G. Earl Hydrick  
 I H Services Inc, Greenville, SC  
 Ms. Sarah H. Ingerick  
 Jean and Dean Realty, Liberty, SC



**5 YEAR** Employees were honored at Southern Wesleyan University's annual Employee Awards Dinner at Founders' Hall Aug. 12. "Fiesta" was the theme for the festive event. Five-year awards were presented to SWU employees, from left, Byron Shirley, Tonda Bagwell, Lori Herron, Amanda Young and Janelle Montgomery. Not pictured are Brenda Evatt, Fran Finch, Linda Hall and Nikki Thrasher.

Ms. April M. Jefferson  
 William and Linda Jenkins  
 Mr. and Mrs. James A. Johnson  
 James and Betty Jones Johnson  
 Rev. James T. Johnson  
 Johnson Controls, Charlotte, NC  
 Barney and NaDean Jones  
 Anton and Wanda Joseph  
 Mike and Jenny Black Keaton  
 Mr. and Mrs. Colin E. Kelley  
 Mr. and Mrs. Dennis R. Kendrick  
 Howell and Myrtle Freeman Kiefer  
 Mrs. Melanie Kierstead  
 Ms. Bryana Renee' King  
 David and Roxana Putman King  
 Mr. and Mrs. Fred G. King  
 Mr. and Mrs. Richard E. King  
 Mr. and Mrs. Vernon King  
 Dr. John E. Kiser  
 Dr. and Mrs. Lee E. Kizer  
 Mr. and Mrs. Larry Kluttz  
 Mr. and Mrs. Donald Kmiecik  
 Mr. and Mrs. Clifford Knupp  
 Jim, Carol and Matthew Krider  
 Mr. and Mrs. Kenneth L. Kruse  
 Mrs. W. F. LaBar  
 Mr. Tim R. Lackey  
 Peter and Lisa Lamos  
 Ms. Nadeen Lawrence  
 Mr. and Mrs. C. E. Lawton  
 William and Janna Richey Lee  
 Mr. and Dr. James Derrick Lemons  
 Dale and Sheryl Tippey Link  
 Ron and Tracy Grant Lippard  
 Mr. and Mrs. J. Timothy Lipsey  
 Little Lamb Too Inc., North Baldwin, NY  
 Dr. Sally M. Lorbach  
 Ms. Virginia Losey  
 Art and Ruth Lovelace  
 Drs. Milton and Verna Johnson Lowe  
 Mr. and Mrs. Jerry L. Lumston  
 Mrs. Lula Spearman Major  
 Mr. and Mrs. William M. Major  
 Manufacturers Tool & Die Co, Inc., Spenceport, NY  
 Mr. and Mrs. Jerry L. Marcum  
 Mr. and Mrs. Raymond E. Massey  
 Rev. and Mrs. W. A. & Louise Massey  
 Dr. and Mrs. Floyd M. Mast

C.B. and Geraldine Masters  
 Mr. Thomas R. Matherlee  
 Rev. and Mrs. R. C. Mathis  
 Mr. and Mrs. Alvin A. McCammon  
 Mr. and Mrs. Donald R. McClellan  
 Rev. Ronald C. McClung  
 Mr. John W. McClure  
 Mr. Lewis McCoy  
 Mr. and Mrs. Melvin "Hank" McCoy  
 Ms. Rebecca Joiner McCracken  
 Mr. Ronald B. McGaha  
 Robert and Lib McIntyre  
 Mrs. Deborah Sickleys McKamey  
 Mr. and Mrs. Billy McKnight, Sr.  
 Samuel and Suzanne Bross Medders  
 Ms. Mary Lou Mewborn  
 Mr. and Mrs. George Michael  
 Mrs. Patricia Patrick Milam  
 Mr. Benjamin L. Milstead  
 Ms. Mary Misenheimer  
 Mrs. Mary Parks Mitchell  
 William "Butch" and Peggy Davenport Mobley  
 Ms. Lisa Molinski  
 Al and Winnie Molloseau  
 Monterrey Mexican Restaurant, Clemson, SC  
 Mrs. Janelle Beamer Montgomery  
 Moody Financial Services Inc., Siler City, NC  
 Mr. T. Curtis Moore  
 Mountain Road Wesleyan Church, Glen Allen, VA  
 Rev. and Mrs. Marlin B. Mull  
 David and Phyllis Babcock Mullinax  
 Paul and Esther Lovin Mullinax  
 Mr. and Mrs. William Gordon Mullinax  
 Ms. Bettye Myers  
 Mrs. Judy McDowell Nance  
 Harold and Gale Nash  
 Gary and Teresa Neely  
 New York Life Foundation, New York, NY  
 Mr. and Mrs. Alvin C. Newcomb  
 Mr. and Mrs. Curtis Newman  
 Mr. Alfred F. Newton  
 Dr. and Mrs. R. Steve Nicholson  
 Mr. Kenneth E. Nix  
 Norfolk/Southern Foundation, Princeton, NJ  
 Norman H Mathews & Regina S. Mathews  
 Family Foundation, Jacksonville, FL  
 Mrs. Louise Whitton Nygren  
 Old Fort Wesleyan Church, NC  
 Mrs. Ruth Ellen Rampey O'Shea

Mr. W. Donald Owens  
 Mrs. Joycelyn B. Owings  
 Mr. and Mrs. John Pace  
 Mr. W. Larry Pace  
 Mr. and Mrs. Donald W. Padgett  
 Mr. and Mrs. E.T. Padgett  
 Mr. Christopher J. Painter  
 Mrs. Norma C. Palmer  
 Pancho's Mexican Restaurant, Central, SC  
 Mrs. Khristy A. Parham  
 Mr. and Mrs. R. Sam Parker  
 Mr. and Mrs. B. Patterson  
 Mr. Doyle E. Pearson  
 Rev. and Mrs. William F. Peed  
 Mrs. Margaret Gunby Penrod  
 Peoples National Bank, Easley, SC  
 Wesley and Alice Peterson  
 Ms. Joan D. Pettigrew  
 Wesley and Darlyne S. Phillips  
 Rev. and Mrs. Don H. Polston  
 Mrs. Sherry Roper Poole  
 Mrs. Eunice G. Powell  
 Mike and Sandy McJunkin Preusz  
 Mr. and Mrs. Dave Pritchard  
 Mrs. Juanita Hill Pritchard  
 Dr. and Mrs. Paul Newton Prichard  
 Progress Energy, Princeton, NJ  
 Providence Wesleyan Church, Chesnee, SC  
 Mr. and Mrs. Steven H. Pusker  
 Ms. Virgil Quisenberry  
 Mr. and Mrs. Marc Ragsdale  
 Dr. Valerie R. Ramsey  
 Mr. Mukesh Rathor  
 Mr. and Mrs. Brian D. Ray  
 Mr. Courtney Record  
 Leo and Marietta Phillips Record  
 Reid Chapel United Methodist Church,  
 Murphy, NC  
 Retreat Baptist Church, Westminster, SC  
 Ms. Mollie C. Reubert  
 Mr. and Mrs. John T. Rhodes  
 Mrs. Fonda Asbury Rist  
 Alvin and Orr Neal Lynn Robinson  
 Mr. William A. Rodriguez  
 Mr. Eric Rollins  
 Mr. and Mrs. Charles C. Rone  
 Dr. Susan Taylor Rouse  
 Dr. and Mrs. George M. Rupp, DDS  
 Mr. Wally Russell  
 Mrs. Marilyn Bennett Rust  
 Mrs. Shirley H. Sarlin  
 Mr. and Mrs. Richard Saydah  
 Mr. and Mrs. Don E. Schaupp  
 Dr. and Mrs. Jim L. Schmutz  
 Ms. Nancy S. Scruggs  
 Seven Oaks Pharmaceutical Corp., Easley, SC  
 Shady Grove Wesleyan Church, Colfax, NC  
 Mrs. Ronda Tucker Sheets  
 Mr. and Mrs. Edward E. Shepherd  
 Ms. Kathy Sheppard  
 Ms. Shelby Jean Simmons  
 Mr. and Mrs. Glenon A. Simpson  
 Ms. Melissa M. Sinclair  
 Dr. Brenda B. Singleton  
 Mr. Edward Michael Sioma  
 Senator Nell Smith  
 Mrs. Ollie C. Smith  
 Ms. Ruth B. Smith  
 Ms. Ruth Outen Smyrl  
 Dr. and Mrs. Ronald L. Snyder  
 Solvi Brands LLC, Roswell, GA  
 South Greenville Landscaping Inc., Piedmont, SC  
 Mr. Gary W. Southern  
 Rev. and Mrs. Tommy E. Southern  
 Mr. Luke Sparrow  
 Mr. and Mrs. Joseph W. Stallings  
 Mrs. Kathy Robbins Stallings  
 Mrs. Faye B. Stamey  
 Wayne and Darlene Stancil

Mrs. Avahlee G. Stanley  
 Mr. and Mrs. Richard A. Stanley, Jr.  
 Ms. Sharon L. Stark  
 Ms. Susan N. Starr  
 Steelworks of the Carolinas, Piedmont, SC  
 Mr. and Mrs. Bryan Stewart  
 Ms. Ginny Null Stine  
 Ms. Nancy P. Stone  
 Mr. and Mrs. C. David Stone  
 Mr. Stephen A. Storey  
 Mr. Tony Storm  
 Mrs. Bobbie Wood Strand  
 Mr. Willie L. Sullivan  
 Mr. Calvin Summey  
 Mr. Ralph E. Summey  
 Mr. and Mrs. William J. Summey  
 Sunmarket Travel, Owasso, MI  
 Suntrust Bank, Easley, SC  
 Samuel and Karen Swinney  
 Mr. Brian D. Swords  
 Mr. and Mrs. Robert L. Taylor  
 Jason and Kelley Elaine Tegen  
 Ms. Kathleen R. Tegen  
 Mr. James D. Terry, Sr.  
 The Pendleton Chapter of SCGS, Seneca, SC  
 Mr. and Mrs. Michael J. Thomas  
 Thomas Realty, Pickens, SC  
 Mr. and Mrs. Michael Thompson  
 Mrs. Pamela Dean Thomson  
 Ms. Patsy S. Thompson  
 Ms. Audrey J. Thornton  
 Ms. Marilyn Thornton  
 Tigertown Graphics, Clemson, SC  
 Ms. Cynthia D. Todd  
 Milton and Mary Hastings Todd  
 Maurice and Fern Tolan  
 Ms. Lindsey Marie Torgerson  
 Ms. Muriel G. Torgerson  
 Total Comfort Service Center Inc., Greenville, SC  
 Transplant Nursery, Lavonia, GA  
 Jeff and Karen Trogdon  
 Mrs. Virginia Key Trueblood  
 LTC James V. Tucker  
 United Wesleyan Church, Easley, SC  
 Mr. and Mrs. Jonas M. Vassey  
 John and Mary Nell Vess  
 Terry and Vickie Wagner  
 Wakefield Spiritual Retreat Conference,  
 Hampton, VA  
 Mrs. Betty Jo Walker  
 Ms. Natalie W. Wallace  
 Ms. Jenny Marie Walters  
 Ms. Jean Darden Warney  
 Mr. David Watson  
 Mr. and Mrs. Ted A. Watson  
 Dr. Theodore West  
 Westminster Wesleyan Women, SC  
 Mrs. Laurel Ann Whisler  
 Mr. and Mrs. Darrell E. Whitaker  
 Mr. and Mrs. Charles R. Whitburn  
 Ms. Carla Dawn Whitlock  
 Mr. Doug D. Whitney  
 Mr. and Mrs. Paul B. Wickensimer  
 Robbie and Jan Stamey Wiggins  
 Paul and Carolyn Duncan Wilcox  
 Cory and Trinetta Dixon Williams  
 Mr. and Mrs. Van E. Williams, Jr.  
 Mr. and Mrs. Wilbur G. Williams  
 Dr. H.C. Wilson  
 Mr. and Mrs. Charles Wimphrie  
 Harold and Patricia Windus  
 Ms. Martha R. Winsor  
 Mr. and Mrs. Steve M. Womack  
 Dan and Kelly Dodgen Wood  
 Pete and Kim Williams Wood  
 Mr. and Mrs. John J. Woods  
 Mrs. Angie Williams Wright  
 Ms. Darlene Hall Wyrick  
 Mr. and Mrs. Julian H. Yelton, Jr.

Mr. C. Wayne York  
 Mr. Douglas R. Young  
 Mrs. James R. Young

## Heritage Club

### Giving Level \$1-99.99

Ms. Grace H. Abney  
 Mr. and Mrs. James C. Abrams  
 Mrs. Alice Church Absher  
 Ms. Janie Lyon Ackerman  
 Mrs. Bethany Hoogkamp Adams  
 Mr. Jazy Adams  
 Mr. and Mrs. Harold Adcock  
 Mr. Ron Addis  
 Ms. Marian C. Adkins  
 Affinity 4, Norfolk, VA  
 Mrs. Isidore Ah Kuoi  
 Ms. Alice Albertson  
 Mr. and Mrs. Tommy J. Albertson, Sr.  
 Ms. Eunice Alexander  
 Mr. Jerry Alexander  
 Mr. and Mrs. Shane A. Alexander  
 Mr. and Mrs. James O. Alford  
 Mr. and Mrs. Ronald David Allen  
 Walt and Peggy Allen  
 Mr. and Mrs. Harold W. Alley, Jr.  
 Mrs. Deborah Crenshaw Allgood  
 Mrs. Nancy Gillespie Allgood  
 Alliant Techsystems Community Investment  
 Foundation, Eden Prairie, MN  
 Ms. Anne Gina Allman  
 Cecil and Anne B. Allred  
 Mr. Paul E. Allred, Jr.  
 Ms. Helen J. Ammen  
 Ms. Mae Dell Anderson  
 Ms. Virginia Walton Anderson  
 Mr. and Mrs. Jimmie Dail Andrews  
 Mrs. Mary Sellers Andrews  
 Ms. Eileen J. Angeli  
 Mrs. Penny Biddix Anthony  
 Mr. and Mrs. Matthew Appleby  
 Mrs. Betsy M. Arflin  
 Ms. Willie G. Ashford  
 Ms. Ruth P. Ashley  
 Mr. and Mrs. Jimmy Atkins  
 Mr. Robin Atkins  
 Mr. Will Michael Austin  
 Ms. Mary Jean Ayers  
 Mrs. Waydene Badgett  
 Ms. Doris S. Bailey  
 Ms. Geraldine S. Bailey  
 Mr. Mike Bailey  
 Mrs. Brenda Kinley Baker  
 Mr. and Mrs. Jack E. Barker  
 Mr. and Mrs. Charles E. Barnes  
 Mr. and Mrs. Ronald E. Barnes  
 Mr. and Mrs. Douglas M. Barnett  
 Mr. John D. Barr  
 Ms. Ann Watson Basnight  
 Lamar and Pam Hulme Bass, Jr.  
 Mr. and Mrs. Lenfred R. Bates  
 Mr. and Mrs. Robert Bates  
 Mr. and Mrs. Reginald B. Battle  
 Mr. and Mrs. Dexter E. Baxley  
 David and Mae (Wade) Bayse  
 D. Steve and Heather Beard  
 Mrs. Marna Elizabeth Benton Beard  
 Mr. Greg E. Bearden  
 Mr. and Mrs. Richard E. Beasley  
 Ms. Sarah C. Beasley  
 Mr. and Mrs. Donald G. Beck  
 Mrs. Diana Ollis Bell  
 Mrs. Louise M. Bell  
 Mr. Vernon H. Bell  
 Ms. Myra S. Bellamy  
 Mrs. Ruth Waud Bellis  
 Ms. Susan Strollo Belrose

Benefits Assistance Inc., Greenville, SC  
 Ms. Mardee C. Bennett  
 Mrs. Leah A. Benthall  
 Ms. Dina Hollie Berling  
 Ms. Barbara A. Berry  
 Mr. Gene A. Best  
 Ms. Almeda Bickley  
 Mr. and Mrs. Clarence Biddix  
 Ms. Elaine W. Billie  
 Mr. Jeffrey D. Billings  
 Ms. Janice B. Bishop  
 Mr. Lance W. Black  
 Dr. and Mrs. Watson H. Black  
 Mrs. Jewell Richards Blackstone  
 Mr. and Mrs. Michael D. Blackwell  
 Ms. Margaret L. Blair  
 Dr. and Mrs. Dave Blanchard  
 Mrs. Ruby R. Blankenship  
 Ms. Charlotte A. Bodenhorn  
 Mr. Bobbie F. Bohn  
 Mr. and Mrs. Glen Bolding  
 Ms. Regina Kay Bolding  
 Mr. and Mrs. Hugh L. Boles  
 Ms. Polly Bolton  
 Mr. Mel P. Booker  
 Ms. Theresa M. Bouchillon  
 Mr. Trent Bouts  
 Mr. Marty Bowen  
 Mr. and Mrs. Robert B. Bowling  
 Mr. and Mrs. John T. Bowman  
 Ms. Ruby C. Bowman  
 Mr. Dan Boyer  
 Mr. James R. Boyer  
 Mr. and Mrs. James L. Bracey  
 Mr. and Mrs. David R. Bradberry  
 Ms. Clarissa B. Bradford  
 Mr. and Mrs. Richard J. Bradford  
 Mrs. Sandra Salter Bradford  
 Rev. James R. Brady, Jr.  
 Mr. James W. Bradley  
 Mrs. Opal Sheets Bradley  
 Mrs. Myra P. Bregger  
 Ms. Carolyn Brice  
 Dr. James C. Brice, Jr.  
 Mr. and Mrs. Wayne C. Brigman  
 Ms. Joyce Childers Britt  
 Mrs. Rachel C. Brittain  
 Mr. and Mrs. Thomas R. Broome  
 Mr. Brandon Coy Brown  
 Mr. and Mrs. Kenneth Brown  
 Mr. and Mrs. James Douglas Brown  
 Ms. Joan Powell Brown  
 Mr. O.R. Brown  
 Ms. Tena Osteen Brown  
 Mrs. Shirley Briggs Brown  
 Mr. and Mrs. William Kent Brown  
 Mrs. Joann B. Brucke  
 Mr. and Mrs. Dwight Allen Bryant  
 Mrs. Michelle Broome Bryant  
 Mr. and Mrs. Eddie Bryson  
 Ms. Rachel L. Bryson  
 Mr. Scott Edward Bryson  
 Ms. Brittany Danielle Buchanan  
 Mr. Bryan E. Buck  
 Mr. and Mrs. Russell Buck  
 Mrs. Susan Mulz Bullard  
 Ms. Gayle Scott Bumgarner  
 Rev. Edsel Burgess  
 Mr. and Mrs. Matthew L. Burgess  
 Mr. and Mrs. Michael E. Burgin  
 Ms. Margaret F. Busha  
 Mr. and Mrs. Ronald J. Busha  
 Mr. and Mrs. Louis Bustos  
 Mr. and Mrs. Alton K. Butler  
 Mrs. Evelyn Good Butts  
 Ms. Eulane Byrd  
 Ms. Carol K. Caldwell  
 Mr. and Mrs. Clarence Caldwell  
 Ms. Donna Wilson Caldwell

# 2007-2008 DONORS

Dr. Wayne E. Caldwell  
Rev. Ralph A. Campbell  
Mr. and Mrs. Ronny D. Cantrell  
Mr. and Mrs. Robert Capdevila  
Mr. and Mrs. B. Hugh Carpenter  
Mr. and Mrs. W.A. Carr  
Mrs. Regina Foster Carroll  
Bill and Libba Carson  
Ms. Joan Carter  
Mr. Louis M. Carver  
Mr. and Mrs. Gray Cashatt  
Mrs. Lorine Cathey  
Dr. and Mrs. Roland E. Cavanaugh  
Ms. Patricia Jackson Chandler  
Mr. Matthew Taylor Charpia  
Mr. Nathan M. Childs  
Mr. and Mrs. Stan W. Childs  
Mr. and Mrs. Edwin A. Chriscoe  
Mr. Samuel L. Chrisley  
Mr. and Mrs. M.E. Christopherson  
William and Mary Bowers Clardy  
Mr. and Mrs. James W. Clark  
Mr. William H. Clayton  
Mr. Ralph Clement  
Mr. M. Duke Cleveland  
Mrs. Natalie Payne Cloninger  
Mrs. Murley Coble  
Dr. Anita Cara Cochran  
Dr. Gareth L. Cockerill  
Mr. and Mrs. Thomas M. Coffey  
Ms. Deana Styron Coker  
Mr. and Mrs. Larry Cole  
Mr. and Mrs. Ronney E. Cole  
Mr. Dennis Coleman  
Mrs. Lois B. Coleman  
Mr. and Mrs. Bill Conn  
Mr. and Mrs. Fred Connington  
Mr. and Mrs. Allen Connor  
Mr. and Mrs. Jerry Conway  
Ms. Betty J. Cooke  
Mr. Franklin D. Cooper  
Ms. Jill Cooper  
Mrs. Susan Richardson Cooper  
Ms. Cindy Cox  
Mr. David W. Cox  
Mr. and Mrs. Eugene W. Cox  
Rev. Leroy C. Cox  
Mrs. Valeta Suggs Cox  
Mr. and Mrs. Joey Lenn Craig  
Mr. G.H. Craker  
Mr. and Mrs. Jack Crane  
Mrs. Mary Ella Craner  
Mr. Gary Crisp  
Mr. David Cross  
Mr. and Mrs. David J. Cross  
Mrs. Margaret Shigley Crowe  
Ms. Nell R. Cude  
Mr. H. Kenneth Culbertson  
Ms. Edna D. Curtis  
Curtis Family Revocable Trust  
Mr. and Mrs. Jeffrey Keith Dacus  
Mrs. Joyce Stancell Dalton  
Mr. and Mrs. Leland H. Damon  
Mrs. Elizabeth Chambers Daniel  
Ms. Mary R. Davidson  
Ms. Evelyn C. Davis  
Mr. and Mrs. Gaines C. Davis, Jr.  
Mr. James E. Davis  
Mrs. Rebecca Eades Davis  
Mrs. Tara Causey Davis  
Mr. and Mrs. Walt H. Davison  
Mr. Larry Dawalt  
Mr. Mark Dawalt  
Mr. and Mrs. William L. Dawkins  
Mr. and Mrs. Greg C. Day  
Mr. Terry W. Day  
Mr. and Mrs. Matthew Dellinger  
Ms. Joan L. Deloache  
Rev. and Mrs. James L. Denny  
Mr. and Mrs. Willem Depape  
Mrs. Allene Wyrick DeWeese  
Mr. and Mrs. Stanley Dickerson  
Mr. and Mrs. Carl J. Dietrich  
Mr. William D. Dill  
Mr. and Mrs. Joseph J. DiMarco  
Mr. and Mrs. Robert Dittman  
Mr. and Mrs. William R. Donaldson  
Dr. and Mrs. Herbert H. Dongell  
Mr. and Mrs. Ralph Dorsett  
Mr. Bradley A. Dover  
Dr. and Mrs. Tom Drake  
Ms. Alice K. Drozdowicz  
Drs. Hare and Martin PA, Seneca, SC  
Duckett-Robinson Funeral Home, Central, SC  
Mr. and Mrs. George M. Dueitt  
Ms. Renate Loveless Dugans  
Mr. John K. Duncan  
Mr. and Mrs. Robert T. Duncan  
Mr. Harry L. Dunlap  
Mr. and Mrs. Sam C. Dunn  
Mr. and Mrs. Michael D. Dunsmuir  
Ms. Teresa Hudson Dupuis  
Mrs. Edith Durham  
Durham's Automotive Inc., Six Mile, SC  
Mrs. Elvera Duvall  
Ms. Jessie Dye  
Ms. Melinda Kay Dyson  
Ms. Clara H. Eads  
Mr. and Mrs. James Mitchell Eaker  
Ms. Rebecca L. Earhart  
Mr. and Mrs. Boyce Easter  
Ms. Cynthia Easter  
Mrs. Tracy Lytle Eckerley  
Mr. and Mrs. Edgar Eckley  
Preston and Donna Loftis Edmonds  
Mr. and Mrs. Richard Edwards  
Mr. Wesley P. Eilbert  
Mrs. Lisa Smith Eister  
Mr. Karl Ekberg  
Mr. Joseph Elam  
Mrs. Virginia Jones Elder  
Mr. and Mrs. Ricky Elliott  
Mr. and Mrs. Donald E. Ellis  
Mr. and Mrs. Robert E. Ellis  
G. Tony and Debbie Waldrop Ellison  
Ken and Valarie Martin Ellison  
Mrs. Allison Moore Elswick  
Mrs. Betty Butler Enlow  
Eugene and Betty Erickson  
Mrs. Kathryn Erickson  
Mr. and Mrs. Mark B. Erickson  
Ms. Laurie G. Esler  
Mr. and Mrs. Norbert J. Esser  
Mr. Bill Eudy  
Mr. and Mrs. Mike Evans  
Mr. and Mrs. James G. Evatt, Sr.  
Ms. Marian E. Evatt  
Mr. and Mrs. Scott R. Everhart  
Ms. Melba R. Fant  
Don and Peggy Farlow  
Halsted and Margaret Feaster  
Ms. Patricia C. Fekete  
Dr. and Mrs. Gary P. Fellers  
Ms. Glenda White Fields  
Ms. Rebecca Fields  
Mrs. Fran King Finch  
Mr. and Mrs. Henry F. Fishel, Jr.  
Ms. Dorothy Fletcher  
Mrs. Doris Mitchell Flint  
Mr. and Mrs. John Flowers  
Ms. Patricia Foley  
Mr. and Mrs. Winfred Forbis  
Mr. and Mrs. Charles S. Ford  
Kenneth and Alice Foutz  
Rev. and Mrs. Leon D. Fowler  
Mr. and Mrs. F.M. Fox  
Mrs. Sarah L. Fraction  
Mr. and Mrs. Philip W. French  
Mrs. Diane F. Fromme  
Mr. and Mrs. Jason R. Fussell  
Ms. Debora Futch  
Mr. Bobby G. Futrell  
Ms. Hellen Schuster Gable  
Mrs. Annie Mae Lyda Gaines  
Mr. Kevin Gais  
Ms. Anne G. Galloway  
Mr. and Mrs. John Garmon  
Mrs. Edith A. Garrett  
Ms. Patricia A. Garrison  
Ms. Geneva H. Gasperson  
Mr. and Mrs. Joseph P. Gatlin  
Ms. Mildred L. Gaylor  
Mrs. Ruth Gearren  
Mr. and Mrs. Reggie E. Gentry  
Foster and Sylvia Bailey Gentry  
Mr. and Mrs. Kenneth W. George  
Mr. and Mrs. E. Joel Gerringer  
Mr. and Mrs. L. Dale Gilbert  
Mr. Chase Gillespie  
Mr. Gary A. Gillespie  
Mrs. Melanie Bresch Gillespie  
Mr. and Mrs. Mike Gillespie  
Mr. and Mrs. David R. Gilstrap  
Mrs. Wilma Cheek Gilstrap  
Billy and Tina Richard Ginn, Jr.  
Mr. Robert S. Girard  
Ms. Anna T. Glenn  
Ms. Wilma H. Glunk  
Ms. Sonya B. Goodman  
Ms. Lucinda Gordon  
Eddie and Susan Evatt Gray  
Mr. and Mrs. Danny Graybeal  
Mr. and Mrs. Buddy E. Green  
Ms. Jacqueline Belton Green  
Mr. and Mrs. Jim G. Green  
Ms. Pamela R. Greene  
Mr. and Mrs. Stanley Greene  
Greene and Company LLP, Greenwood, SC  
Mr. and Mrs. Eddie Greer  
Mr. and Mrs. Arthur L. Gregory  
Mrs. Gene Gregory  
Mr. and Mrs. Judson J. Gregory  
Mr. and Mrs. John F. Griffin  
Ms. Luzanne M. Griffith  
Ms. Kimber L. Griffiths  
Mr. and Mrs. John F. Grimes  
Dr. John W. Groce  
Scotty and Rachel Preusz Gulleddge  
Dr. and Mrs. Jim D. Hager II  
Mrs. Judith Marchant Hale  
Mr. and Mrs. Anthony Todd Hall  
Rev. Barbara B. Hall  
Ms. Dianne H. Hall  
Mrs. Karla Pilgrim Hall  
Dr. Linda Crawley Hall  
Ms. Ruth M. Hall  
Rev. S. A. Hamby  
Mr. and Mrs. Worth A. Hamilton  
Ms. Rhonda Gentz Hamlin  
Mrs. Patricia J. Hampton  
Mr. and Mrs. Harold Paul Hamrick  
Mr. and Mrs. Michael D. Hamrick  
Ms. Peggy L. Hanchey  
Mr. and Mrs. Donald L. Harder  
Stephen and Mary Hardin  
Mr. and Mrs. William M. Hardin  
Mrs. Linda G. Harding  
Mr. and Mrs. Bill Harley  
Mrs. Kerry Hiott Harper  
Mr. and Mrs. Charles Harrell  
Mrs. Wayne Harris  
Ms. Pamela R. Harris-Jenkins  
Mrs. Una R. Harvey  
Ms. Noleen E. Hathaway  
Mr. Robert J. Hawk  
Mr. and Mrs. Eddie Hawkins  
Rev. and Mrs. James Rick Haworth  
Mrs. Johnnie H. Hayes  
Mr. and Mrs. R.C. Hayes  
Mr. and Mrs. J. Robin Haynes  
Ms. Chloe Marie Head  
Mr. Toy H. Head, Jr.  
Ms. Donna Heasler  
Mrs. Elizabeth Fowler Hedrick  
Mr. Chad Hendley  
Mrs. Gilda Alexander Hendricks  
Ms. Phyliss Carroll Hendry  
Mr. and Mrs. Ralph T. Henry  
Mr. and Mrs. Kenneth L. Herman  
Mr. and Mrs. Larry Herrington  
Mrs. Lori Maxie Herron  
Mr. and Mrs. Keith E. Hibner  
Mr. and Mrs. L. Wayne Hickey  
Ms. Margaret K. Hickman  
Mr. Clyde Hicks  
Ms. Mildred High  
Ms. Linda Highsmith  
Mr. Chester A. Hill  
Mr. and Mrs. Gilbert H. Hine  
Ms. Dolores A. Hiott  
Mrs. Rae Nell Richard Hix  
Mrs. Martha Hubbard Holcombe  
Mr. John David Holland  
Mr. and Mrs. Joseph R. Holland  
Mr. and Mrs. Charles Holliday  
Mr. and Mrs. Chuck Holliday  
Mr. and Mrs. Norman L. Holliday  
Mr. Walton K. Holliday  
Mr. and Mrs. Ralph L. Holmes  
Mr. William J. Holmes  
Mr. and Mrs. James Holtz  
Mr. Craig Homan  
Mrs. Dorothy B. Honea  
Ms. Ginny E. Hooker  
Ms. Elaine A. Horton  
Mr. and Mrs. Charles P. Horton  
Ms. Hazel Hostetter  
Mr. and Mrs. Bill Houston  
Mr. and Mrs. Kenneth L. Howe  
Mr. and Mrs. David W. Hoyle  
Mr. and Mrs. Perry J. Hubbard  
Duane and Montess Gravley Huff  
Mr. Kenneth L. Huff  
Mr. and Mrs. Kenneth R. Hull  
Mrs. Carolyn Meeks Hunnicutt  
Ms. Valerie C. Hunter  
Mr. and Mrs. Raymond L. Hurlock  
Mr. Tom Hyll  
Dr. and Mrs. Henry Boyd Israel  
Rev. and Mrs. Charles E. Jackson  
James and Nancy Howard Jacobs  
W. Paul and Susan Cooke James  
Mr. Frank Jankowy  
Ms. Jeraline Kelly Janney  
Mr. J. C. Jarrell  
Mr. and Mrs. Forrest A. Jenkins  
Mr. O. K. Jennings  
Dr. and Mrs. Ted Jennings  
Mr. Mike G. Jewell  
Ms. Lillian Johnson  
Ms. Patricia Johnson  
Mr. Ron E. Johnson  
Mrs. Ruby B. Johnson  
Mr. and Mrs. Tex A. Johnson  
Ms. Ashley Elizabeth Joiner  
Mrs. Barbara Price Jones  
Charles and Shauna Wood Jones  
Ms. Diane L. Jones  
Mr. Stephen F. Jones  
Mr. and Mrs. Thomas E. Jones  
Mr. and Mrs. Tom Jones  
Ms. Veronica E. Jones  
Ms. Vitina Phillips Jones  
Mr. and Mrs. Thomas M. Jordan  
Ms. Beatrice D. Joseph  
Junior Pilgrim Builders, Central, SC



**10 YEAR** Employees honored at Southern Wesleyan University's annual Employee Awards Dinner for 10 years of service included, from left, Don Campbell, Joy Bryant, Roger McKenzie, Chuck and Betty Mealy. Not pictured is Mari Gonlag.

Mr. John T. Karns  
 Mr. and Mrs. Palmer E. Keaton  
 Daniel and Jill Jennings Keeran  
 Mrs. Opal M. Keeran  
 Mr. and Mrs. Franklin D. Kees  
 Mr. James R. Kellar  
 Pete and Melissa Keller  
 Mrs. Mary Mitchell Kelley  
 Ms. Taney Hartsell Kelley  
 Mr. and Mrs. Kenneth P. Kelly  
 Mr. and Mrs. James R. Kendrick  
 A. J. and Martha Kendrick  
 Mr. and Mrs. William M. Ketchum  
 Wilbur and Jewell Duncan Key  
 Mr. Jerry Kicklighter  
 Mrs. Phyllis Gentry Kidd  
 Mr. and Mrs. John Killian  
 Mr. John J.P. Kincaid  
 Mrs. Joanne Talbert Kindley  
 Mr. Stephen R. Kindschi  
 Butch and Jeanette Lowdermilk King  
 Mrs. Helen Kington  
 Rev. Ed Kirkpatrick  
 Mr. and Mrs. Tom Kirkpatrick  
 Larry and Joy Hutcheson Klotzle  
 Mrs. Virginia Kohler  
 Mrs. Sara Margaret Pierson Kornegay  
 Mr. and Mrs. Andrew A. Kraft  
 Rev. Dean and Jean Golden Kring  
 Mr. and Mrs. Steven Kropelnicki  
 Mrs. Carrie Hatchett Kuester  
 Mr. and Mrs. Rocky Kurland  
 Ms. Angela La Faille  
 Mr. and Mrs. Gary A. LaBoone  
 Mr. and Mrs. Curtis S. Lackey  
 Mr. and Mrs. Steve P. Lambrecht  
 Dr. Barbara Panhorst Lassiter  
 Ms. Connie Lawson  
 Mr. and Mrs. Frank Leagan  
 Mrs. Shirley Lineberry Lednum  
 Mrs. Rolann C. Lee  
 Mr. and Mrs. John L. Leonard  
 Josh and Laura McKenzie LeRoy  
 Ms. Karla Hubbard Lever  
 Rev. C. Ray Lewis  
 Mrs. Lillie Goodman Lewis  
 Mrs. Lynn Lorene Lindsey  
 Ms. Margaret E. Lindsey  
 Ms. Michelle L. Lindstorm  
 Mr. and Mrs. Arthur J. Lipina  
 Mr. and Mrs. Dupre Little

Mr. and Mrs. Richard W. Littlejohn  
 Mrs. Sue Lochmueller  
 James and Patricia Hugher Lockaby  
 Mrs. Diana Martin Lockamy  
 Sidney and Janice Newton Loggins  
 Mrs. Aline B. Loman  
 Mr. and Mrs. Earl Long  
 Ms. Delores Long  
 Mrs. Angela Berry Loomis  
 Mr. Michael A. Looper  
 Looper Limited Partnership, Easley, SC  
 Mr. and Mrs. Terry Lovelace  
 Mrs. Peggy Lovin  
 Mrs. Ann B. Lowry  
 Mr. and Mrs. O.L. Luke  
 Rev. J. Arnold Luther  
 Rev. and Mrs. Lewis G. Lyon  
 Ms. Ashley Rose Lyseski  
 Mrs. Jean Barton Macon  
 Mrs. Doralee Mann  
 Mr. and Mrs. James A. Mann  
 Mrs. Linda Mann  
 Mr. and Mrs. Robert G. Mann  
 Mr. Robert G. Mann  
 Rev. Jeffrey A. Mansell  
 Mrs. Eulalia H. Marett  
 Mr. and Mrs. Daniel E. Markovich  
 Mr. Travis Kameron Markovich  
 Mr. and Mrs. Robert N. Marley  
 Mr. and Mrs. Dan Marshall  
 Mr. Ben Martin  
 Mr. and Mrs. Clyde Martin  
 Ms. Helen Martin  
 Ms. Juanita M. Martin  
 Mrs. Melanie Pitts Martin  
 Mrs. Anna Lou Carrington Marvin  
 Ms. Catherine S. Marvin  
 Ms. Esther F. Mason  
 Mr. Wayne Massingill  
 Mr. Ronald Maw  
 Ms. Ruth Maw  
 Mr. and Mrs. Harry B. Mays, Jr.  
 Mr. Larry McAlpine  
 Ms. Aggie Nora McCall  
 Mr. and Mrs. George McCallum  
 Mr. and Mrs. Thomas Weston McCallum  
 Mr. Brian McCaskill  
 Mrs. Evelyn N. McCollum  
 Mr. and Mrs. Robert B. McCrary  
 Mr. and Mrs. Kay A. McCurry  
 Ms. Barbara McDonald

James and Betty Whyde McIntosh  
 Benny and Naomi Paine McJunkin  
 Mrs. Jackie McJunkin  
 Mr. James C. McKay  
 Mr. and Mrs. Walter N. McKee  
 Ms. Kimberly M. McKenzie  
 Mr. and Mrs. Eugene McKie  
 Mr. and Mrs. Steve J. McMillan  
 Ms. Carissa Renee McNab  
 Ms. Deborah H. McNeely  
 Mr. Perry McNeill  
 Ms. Eugenia G. McNeill  
 Mr. and Mrs. Mark David Mealy  
 Mr. and Mrs. Robert A. Means  
 David and Ann Wood Medders  
 Ms. Jennifer Strickland Meece  
 Ms. Sadie Lee Meetze  
 Mr. and Mrs. Mike Merck  
 Mr. John P. Merck  
 Mr. and Mrs. David L. Meredith  
 Mr. and Mrs. Paul G. Metzger  
 Mr. and Mrs. Robert J. Miersma  
 Mr. and Mrs. Alfred B. Miller  
 Mr. and Mrs. Darrell Miller  
 Mr. and Mrs. Glenn N. Miller  
 Mr. Jan P. Miller  
 Mr. and Mrs. Samuel M. Miller  
 Mr. Larry S. Milstead  
 Mrs. Mildred Jester Mitchell  
 Mrs. Verna Cole Mitchell  
 Ms. Olga E. Moody  
 Mrs. Diana Tovrea Moody  
 Mr. and Mrs. Keith L. Moody  
 Ms. Patsy M. Moody  
 Dr. and Mrs. Walter Moody  
 Mrs. Janice Davidson Moon  
 Ms. Karen Renee Moore  
 Mr. and Mrs. Tim Moore  
 Mr. Joseph S. Moorefield  
 Mr. Daniel B. Moorhead  
 Mr. and Mrs. Harry T. Morden  
 Mrs. Frankie L. Morgan  
 Mrs. Louise Herring Morris  
 Mr. and Mrs. Garland Morris  
 Mr. and Mrs. Joseph B. Morrow  
 Mr. and Mrs. Michael C. Morrow  
 Mr. and Mrs. Ernest E. Mosley  
 Gary and Martha Harvey Mosley  
 Ms. Ruth Mosley  
 Ms. Theresa J. Fleet Mullinax  
 Mrs. Icie Sha Mullis  
 Mr. and Mrs. Alan G. Murdoch  
 Ms. Marlenia Collins Murray  
 Mr. and Mrs. Gregory L. Murray  
 Ms. Christine Nalley  
 Ms. Martha H. Nalley  
 Mr. and Mrs. Joseph Nathan  
 Dr. and Mrs. Rocky Nation  
 Mrs. Carmen McCollum Neal  
 Mr. and Mrs. Oliver A. Nealy  
 New Dimensions Builders LLC., Simpsonville, SC  
 Mr. and Mrs. William R. Newman  
 Mr. George "Donald" Newton  
 Ms. Teresa Pearson Newton  
 Fred and Ruth Gorveatte Neyman  
 Tommy Joe and Shirley Stokes Neyman  
 Mr. and Mrs. Fred Nichols  
 Rev. Joseph R. Nicholson  
 Mrs. Alice Daft Niswander  
 Mr. Douglas A. Noel  
 Ms. Sarah A. Norris  
 Mr. William M. Norris  
 Ms. Judith R. Norton  
 Mr. and Mrs. Richard Norton  
 Mrs. Virginia Norwood  
 Mrs. Bernice Quarles Nyberg  
 Mrs. Elizabeth Lindsey O'Barr  
 Mr. and Mrs. Matthew Oglesby  
 Mr. and Mrs. Albert Oldroyd

Ms. Audrey Bagley Osteen  
 Mr. and Mrs. Jeffrey Linn Overcash  
 Mr. and Mrs. Bryan J. Owens  
 Mr. and Mrs. Jacob L. Oxendine  
 Mrs. Katherine Cooke Pace  
 Mr. and Mrs. Harold V. Pacholke  
 Mr. Joe A. Page  
 Kenneth and Janice Scott Page  
 Mr. and Mrs. Rudolph Painter  
 Mrs. O'Della Harbour Palmer  
 Ms. Bernice B. Parker  
 Mrs. Peggy Hibbs Parnell  
 Joey and Cheryl Ann Parrish  
 Ms. JoAnne Parrish  
 Mr. and Mrs. Olson Parrott  
 Ms. Joyce L. Pate  
 Mr. and Mrs. James C. Patterson  
 Mrs. Jenny H. Patterson  
 Mr. Lewis Patterson  
 Rev. William Jonathan Payne  
 Wayne and Judy Creed Peabody  
 Mr. David R. Pelfrey  
 Mr. and Mrs. Larry B. Penley  
 Ms. Jan Davis Petersen  
 Mrs. Megan Lord Petersen  
 Mr. and Mrs. Steve Peterson  
 Bill and Christine Cobb Pevy  
 Gary and Nina Phaup  
 Mr. and Mrs. Donald C. Phillips  
 Pickens County Alumni Chapter, Central, SC  
 Mr. Dalton H. Pierce  
 Ms. Dorothy Pilgrim  
 W.E. and Elaine Pinion  
 Mr. V. David Pipes  
 Rev. Clarence O. Pittman  
 Robert and Donna Burkam Pittman  
 Mrs. Frances D. Pitts  
 Mr. and Mrs. Steve Plummer  
 Mr. and Mrs. M. Paul Poole  
 Mrs. Sandra Randolph Jones Poppell  
 Mr. Darren Poteat  
 Paul and Doris Gibson Powers, Jr.  
 Arthur & Gaynelle Pressley  
 Mrs. Mary Simmons Pressley  
 Mr. and Mrs. W. Curtis Pressley  
 Ms. Catherine Prillo  
 Mrs. Tammy Cole Provost  
 Ms. Angela L. Pruitt  
 Ms. Ruth Agner Pruitt  
 Dr. Bill F. Purkey  
 Dr. and Mrs. Everett Putney  
 Nathan and Brenda Jones Putney  
 J. Marvin and Rachel Moorefield Quarles, Sr.  
 R & E Grading Inc., Anderson, SC  
 Mr. Max D. Rabon  
 Mrs. Jane Chambers Rackley  
 Mrs. Myrtle Cude Radford  
 Mr. and Mrs. LeRoy Rainbow  
 Ms. Corinne D. Rainey  
 Mr. and Mrs. Nathan Rainey  
 Mr. and Mrs. Robby D. Ramey  
 Mr. and Mrs. Robert E. Rampey  
 Mrs. Helen Anderson Raper  
 Mr. and Mrs. David A. Rathbone  
 Jeff and Lori Hodges Ray  
 Mr. and Mrs. John Ray  
 Mrs. Rachel Mills Reagan  
 Mr. and Mrs. David D. Reaney  
 Dr. and Mrs. Joel F. Reed  
 Mr. and Mrs. Kenneth H. Reep  
 Mr. and Mrs. Phil E. Reeves  
 Mr. and Mrs. George R. Reiter  
 Mrs. Martha C. Reubert  
 Mrs. Donna Albright Rex  
 Mr. Richard T. Reynolds  
 Mr. and Mrs. Larry Reynolds  
 Ms. Betty R. Rhyne  
 Ms. Linda J. Rice  
 Mr. Wayne H. Rice

# 2007-2008 DONORS

Don and Leola Sheffield Richardson  
Mr. Roger Richardson  
H. Parkes and Jewell S. Richey  
Mr. and Mrs. B. Timothy Rickman  
Mr. and Mrs. Jerry E. Riddle  
Mrs. Noralee H. Robert  
Mr. and Mrs. Donald W. Roberts  
Rev. and Mrs. Glen L. Roberts  
Mr. and Mrs. Horace D. Roberts  
Ms. Jane V. Roberts  
Ms. Angela M. Robinson  
Ms. Marie B. Robinson  
Mrs. Sandra Lain Robinson  
Ms. Terri A. Robinson  
Mrs. Brenda Partin Rock  
Mrs. Beth Stuart Roe  
Ms. Cherie J. Rogers  
Mr. and Mrs. Larry R. Rogers  
Ms. Rebecca Rogers  
Mr. William Rogers  
Mr. Willie S. Rogers  
Mrs. Mildred Grant Roland  
Mrs. Kathryn Smith Rollins  
Jared and Brandi Alexander Roper  
Ms. Leeann Rose  
Marion Gaines and Wanda Lewis Ross  
Ms. Mary W. Ross  
Larry and Renee Roughton  
Mr. and Mrs. Chet Neil Rowan  
Mr. and Mrs. Joseph F. Rowland  
Ms. Aimee Sackett  
Mr. and Mrs. Ralph A. Saczawa  
Dr. Francisco Araujo Salles De Souza  
Mrs. Dana Young Sanders  
Mr. Dean Sanders  
Stephen and Carolyn Downey Saunders  
Dr. and Mrs. Joe C. Sawyer  
Rev. and Mrs. Paul Schantz  
Rev. Gene Schenck  
Mr. Derek S. Schmitt  
Mrs. Pam H. Schmutz  
Mr. and Mrs. Robert J. Schupp  
Ms. Clara B. Scott  
Mr. Melvin Scott  
Joe and Mary Nalley Seaborn  
Mr. and Mrs. Kevin M. Seal  
Mr. Joseph H. Sears  
Mr. and Mrs. Bruce E. Sedich  
Mrs. Vickie Beaver Seigler  
Ms. Carolyn Dark Setzer  
Mr. and Mrs. Charles William Sexton  
Mr. Marion Wayne Sexton  
Mr. and Mrs. Olyn Ray Sexton  
Mrs. Sylvia Braswell Sexton  
Ms. Vickie L. Sexton  
Ms. Maggie Seymore  
Mr. George F. Shaffer  
Ms. Karen M. Shamburg  
Danny and Karen Frisbee Sharpe  
Mr. and Mrs. Ralph P. Shelton  
James and Kathy Reece Shepard  
Mrs. Cindy Hoyle Sherrill  
Mr. and Mrs. Donald Shirley  
Mr. and Mrs. Rob S. Shore  
Mrs. Janet R. Simmons  
Ms. Betty Sims  
Mrs. Genelle Waldrop Sisk  
Ms. Dorothy C. Skelton  
Mr. Bill M. Slater  
Ms. Lucille K. Slaughter  
Mr. and Mrs. Samuel H. Slaughter  
Mr. and Mrs. C. E. Sloan  
Mr. and Mrs. Claude L. Smethers  
Ms. Billie R. Smith  
Ms. Cora Lee Smith  
Mr. Donald J. Smith  
Ms. Elizabeth A. Smith  
Mr. and Mrs. Enoch Smith  
Jason and Carolyn Burdette Smith

Ms. LaCheryl C. Smith  
Mr. Lou Smith  
Mr. and Mrs. Patrick B. Smith  
Ms. Peggy M. Smith  
Mr. and Mrs. Revel Smith  
Mr. and Mrs. Robert Smith, Sr.  
Mrs. Ruth Butts Smith  
Mr. and Mrs. Steven K. Smith  
Ms. Thelma Smith  
Mr. and Mrs. Thomas A. Smith  
Mr. William A. Smith  
William D. & Rebecca L. Smith  
Mr. and Mrs. William L. Smith  
Mrs. Carolyn Culp Soukup  
Mr. and Mrs. Bill Spangler  
Mr. and Mrs. Wayne A. Spear  
Mrs. Nanie Segers Speas  
Mr. and Mrs. Morgan Spiller, Jr.  
Mr. Ronald P. Spinharney  
Earl and Lauretta Derr Spivey, Jr.  
Ms. Kristine K. Sports  
Mrs. Irene Stack  
Mr. and Mrs. Sidney D. Stallings  
Mr. and Mrs. T. B. Stancell  
Mr. and Mrs. Daniel Troy Stanley  
Mrs. Martha N. Stansell  
Mrs. Karen G. State  
Mr. Mark Steadman  
Mr. Ronnie A. Stegall  
Douglas and Janet Waldrop Stephens  
Rev. and Mrs. Michael Stepp  
Ms. Gladys Stewart  
Mr. Jake N. Stewart  
Mrs. Vera Parks Storey  
Robert and Sandra Knox Stricker  
Ms. Mary C. Strickland  
Ms. Carol J. Sullivan  
Ms. Lillie M. Sullivan  
Mr. and Mrs. Charles E. Summey  
Mr. and Mrs. Grover F. Summey  
Mrs. Joan Smith Summey  
Mr. Mark T. Summitt  
Mr. Frank C. Suter  
Mr. and Mrs. Steve Sutherland  
Mrs. Ruth M. Sweeney  
Mr. Walter G. Sweet, Jr.  
Mrs. Sandra Day Swift  
Dr. Richard N. Sykes  
Mrs. Emma Lou M. Talley  
Ms. Hazel Tatum  
Ms. Marva A. Tatum  
Mrs. Elizabeth Williams Taylor  
Dr. Vicki Brand Teague MD  
Mr. and Mrs. Larry Eugene Teboe  
Mr. and Mrs. Edwin D. Terres  
Mr. and Mrs. Frank M. Testa  
The Gardens at Eastside, Atlanta, GA  
Mr. Kenneth L. Thomas  
Mr. and Mrs. Michael F. Thomas  
Ms. Patricia T. Thomas  
Ted and Kay Thomas  
W. Ray and Arminia Smith Thomas  
Ms. Annie Thompson  
Mr. Arch Thomason  
Mr. and Mrs. Fred Thompson  
Mrs. Kathleen Atkins Thompson  
Mr. and Mrs. Leon E. Thompson  
Mrs. Nadine B. Thompson  
Mr. Stanley Thompson  
Mr. and Mrs. Oscar A. Thorsland  
Ms. Nikki Elaine Thrasher  
Ms. Caridad C. Timmerman  
Dr. and Mrs. W. Allan Tinsley  
Mr. and Mrs. Daniel Tolan  
Rev. and Mrs. Dave M. Tolan  
Charles and Frances Tolliver  
Mrs. Grace S. Towe  
Mr. and Mrs. Charles E. Townsend  
Mr. and Mrs. Eugene Trammell

Rev. Dale E. Travis  
Mr. and Mrs. Kemuel E. Travis  
Ms. Annie Tribble  
Trinity Wesleyan Church WWI  
Mrs. Pat Duke Troyer  
Mr. and Mrs. Cullen Tubb  
Mrs. Betty Weathers Tucker  
Mr. and Mrs. Arthur Turner  
Mr. and Mrs. L.A. Turner  
Ms. Nancy M. Turpin  
Mr. and Mrs. Huey E. Tyra  
Uncle Sams Antiques and Collectibles, Easley, SC  
United Technologies, Hartford, CT  
Carroll and Carolyn Upton  
Mr. and Mrs. Leroy Vernon  
Mr. and Mrs. Michael J. Vogt  
Wachovia Bank, N.A., Winston Salem, NC  
Mr. Kenneth Allen Wagner  
Waite Park Wesleyan Church Missions,  
Minneapolis, MN  
Mr. and Mrs. John W. Waldrop  
Mr. and Mrs. B.C. Waling  
Ms. Carolyn Walker  
Rev. and Mrs. Edwin B. Wallace  
Mr. and Mrs. Otho G. Wallace  
William and Dianne Vandiver Wallace  
Mr. and Mrs. H. Eugene Waller  
Rev. and Mrs. David Walters  
Mrs. Priscilla R. Waltz  
Mr. and Mrs. L. E. Warden  
Mr. and Mrs. Donald L. Warren  
Ms. Betty Lou Washburn  
Mrs. Nancy Hudnall Waters  
Mr. Allen Watson  
Ms. Phyllis Watson  
Mrs. Janice Polston Watts  
Mr. Lee Watts  
Rev. Dennis Waymire  
Mr. and Mrs. James M. Webb  
Mr. and Mrs. William J. Weeks  
Mr. and Mrs. Ed S. Welch  
Nevin and Kimberly Fields Westurn  
Mr. Donald C. Wheeler  
Mr. John W. Wheeler  
Paul A. and Marie C. Wheeler  
Mr. and Mrs. Eric Whitburn  
Ms. Geraldine Denise White  
Ms. Robbie Ann Wade White  
Ms. Jessica Laine Whitfield  
Mr. and Mrs. Lane R. Whitfield  
Ms. Susan McCall Whitfield  
Ms. Barbara Widener  
Mrs. Melinda Wilbanks  
Mr. Steve Wilbanks  
Mr. and Mrs. L. Mark Wilcox  
Mr. and Mrs. James R. Wilder  
Edwin and Lorraine Midkiff Wiles  
Mr. and Mrs. Dave Wiles  
Mr. and Mrs. Billy "David" Williams  
Mr. and Mrs. B. Craig Williams  
Rev. and Mrs. John Williams  
Mr. and Mrs. Larry T. Williams  
Mr. and Mrs. Charlie E. Willis  
Mrs. Carol Gray Wilson  
Mr. and Mrs. Dustin Wilson  
Ms. Ellen R. Wilson  
Ms. Samantha Shuntill Wilson  
Mr. and Mrs. Kenneth R. Winkler  
Mr. and Mrs. Gary Winters  
Ed and Wilma Wissbroecker  
Mr. and Mrs. Ernest D. Witherspoon  
Mr. and Mrs. Gary H. Wolfe  
Mr. and Mrs. Joseph M. Wolfe  
Mrs. Donna Finley Wood  
Jeff and Holly P. Wood  
Ms. Rebecca H. Wood  
Mr. and Mrs. Redmond S. Wood  
Ms. Vicki Woodling  
Ms. Ethel Wooton

Mr. Walter S. Wooton  
Mr. and Mrs. Michael P. Wright  
Mr. and Mrs. Charles Wright  
Ms. Linda J. Yancey  
Mr. and Mrs. Ronald Yonek  
Greg and Amanda S. Young  
Mrs. Lucille B. Young  
Ms. Carole Kafer Zimmerman  
Mr. and Mrs. Ron Zimmerman

## Alumni

### Unknown Class Dates

Calvin Summey

### 1931

Margaret Shigley Crowe

### 1932

Sue Binns Black  
Willyne Correll Sanders

### 1934

William M. Major

### 1935

Lillian G. Bryant

### 1936

Sallie Evatt

### 1937

Mary Parks Mitchell

### 1938

Helen Anderson Raper  
Ruth Butts Smith

### 1939

Evelyn Elliott Banker  
James H. Johnson  
Evelyn Tucker Rickman

### 1940

Mary Faith Gibson Jennings

### 1941

Seth G. Butner  
Daisy Dean Cleveland Estate  
Martha S. Evatt  
Melvin L. Gentry

### 1942

Virginia Jones Elder  
Faith Newton Hobson  
Juanita Hill Pritchard

### 1943

Marie Evatt  
Steve Nicholson  
Paul Powers, Jr.

### 1944

James L. Brackett  
Evelyn Good Butts  
Thomas C. Childs  
Sara Margaret P. Kornegay  
Doris Gibson Powers, Jr.  
Edgar B. Thomas

### 1945

Betty Jones Johnson  
Lib Norman McIntyre  
Lillian Andrews Robbins  
Orr Neal Lynn Robinson  
Mary Will Wood Thomas

During the 2007-08 fiscal year, Southern Wesleyan University alumni contributed \$810,146.00 to the university. These donations enable the university to provide a quality Christian education to the students on a beautiful and well-maintained campus.

Southern Wesleyan University commends alumni for their annual financial support. Please take note of the following alumni giving highlights.

### ALUMNI GIFTS BY DECADE

Decade	No. of Donors	Alumni of Record	Rate of Partic.	Total Gifts
<b>Kernersville</b>	62	385	16.1%	\$14,266.08
<b>30's</b>	11	65	17.0%	\$8,793.00
<b>40's</b>	56	218	26.0%	\$82,403.80
<b>50's</b>	99	350	28.3%	\$70,574.20
<b>60's</b>	122	419	29.1%	\$134,732.64
<b>70's</b>	132	714	18.5%	\$68,893.60
<b>80's</b>	158	1,364	12.0%	\$60,290.00
<b>90's</b>	162	3,267	5.0%	\$32,870.81
<b>2000's</b>	111	3,716	3.0%	\$18,335.03
<b>Total</b>	<b>913</b>	<b>10,498</b>	<b>8.7%</b>	<b>\$491,159.16</b>

#### 1946

Bonnie Taylor Hicks  
Clyde Hicks  
H. Boyd Israel  
Louise Whitton Nygren  
Don H. Polston  
Nathan Rainey  
Glen L. Roberts

#### 1947

Bobby Haithcock  
Lula Spearman Major  
Hardie Davis Medders  
Mildred Jester Mitchell  
Curtis Newman  
Genelle Waldrop Sisk  
Wilbur G. Williams

#### 1948

Harry R. Connor  
Malcolm E. Ellis  
Buddy E. Green  
Montess Gravley Huff  
Naomi D. Hughey  
W. Talmadge Hughey  
Bill D. James  
Charles Watts Little, Sr.  
Elizabeth Lindsey O'Barr  
Hal G. Robbins  
Marion Gaines Ross  
Joe C. Sawyer  
Bonnie Pridemore Tippey  
D. Clifton Wood

#### 1949

James E. Davis  
Rae Nell Richard Hix  
Margaret Gunby Penrod

Mildred Grant Roland  
Wanda Lewis Ross  
Mary Nell Vess

#### 1950

Joyce Albright Brown  
Elizabeth Mobley Connor  
Johnnie H. Hayes  
Janice Newton Loggins  
William Charles Wright

#### 1951

Leroy C. Cox  
Paul D. Faulkenberry  
Ruth Calhoon Faulkenberry  
Mary Cockman Fowler  
Sidney A. Loggins  
Louise H. Morris  
Ruth Pressley Rampey  
W. Marshall Rampey

#### 1952

John H. Cole Jr.  
Sylvilla Masters Fortune  
Donald Garner  
Lellaree Greene  
James W. Jacobs  
Nancy Howard Jacobs  
Thomas R. Matherlee  
Joseph R. Nicholson  
Clarence O. Pittman  
Maggie Seymore  
Vera Parks Storey

#### 1953

Harold Adcock  
Joyce Childers Britt  
John P. Calhoon  
James W. Clark

Valeta Suggs Cox  
Kenneth D. Dickens  
Rachel Sawyer Dickens  
Darl L. Fowler  
Ginny E. Hooker  
Patricia Hugher Lockaby  
Ruth Maw  
Patricia Patrick Milam  
Samuel M. Miller  
Evangeline Pressley Smith  
Ruth Outen Smyrl  
Carolyn Duncan Wilcox

#### 1954

Billie Faye Wyatt Davis  
Rebecca Eades Davis  
Mary Mitchell Kelley  
Melvin Hank McCoy  
Jan P. Miller  
David Mullinax  
Phyllis Babcock Mullinax  
Don Richardson  
Leola Sheffield Richardson  
Bobbie Wood Strand  
Fred Thompson

#### 1955

Mae Wade Bayse  
Jim C. Blackburn  
Shirley Briggs Brown  
Doris Mitchell Flint  
Martha Hubbard Holcombe  
Billy Jones  
Shirley Stokes Neyman  
Bill F. Purkey  
Jewel Smith Richey  
Herschel A. Smith  
Pat Duke Troyer

### TOP 30 CLASSES BY TOTAL GIVING

	Class	No. of Donors	Alumni of Record	Total Gifts
<b>1</b>	41	4	30	\$32,433.80
<b>2</b>	69	8	60	\$32,200.00
<b>3</b>	62	10	46	\$28,575.14
<b>4</b>	51	8	43	\$20,655.00
<b>5</b>	48	14	16	\$20,575.00
<b>6</b>	68	20	113	\$19,260.00
<b>7</b>	60	8	44	\$18,325.00
<b>8</b>	74	23	115	\$18,208.00
<b>9</b>	52	11	70	\$15,848.00
<b>10</b>	84	13	168	\$11,341.00
<b>11</b>	73	12	101	\$11,213.00
<b>12</b>	64	15	61	\$10,900.00
<b>13</b>	89	25	272	\$9,730.00
<b>14</b>	76	18	137	\$9,703.80
<b>15</b>	40	1	35	\$9,670.00
<b>16</b>	61	11	48	\$8,805.00
<b>17</b>	06	15	762	\$8,615.00
<b>18</b>	53	16	65	\$8,173.60
<b>19</b>	90	15	269	\$8,065.00
<b>20</b>	81	12	144	\$7,300.00
<b>21</b>	85	21	196	\$7,152.00
<b>22</b>	88	19	292	\$6,925.00
<b>23</b>	46	7	35	\$6,895.00
<b>24</b>	79	12	127	\$6,425.50
<b>25</b>	80	13	148	\$6,277.00
<b>26</b>	63	11	46	\$5,770.00
<b>27</b>	58	7	67	\$5,475.00
<b>28</b>	77	13	128	\$5,375.00
<b>29</b>	70	9	59	\$5,235.00
<b>30</b>	56	14	63	\$5,215.00

### TOP 30 CLASSES BY PERCENT OF DONORS

	Class	No. of Donors	Alumni of Record	Total Gifts
<b>1</b>	48	14	56	25.0%
<b>2</b>	53	16	65	24.6%
<b>3</b>	64	15	61	24.6%
<b>4</b>	65	12	49	24.5%
<b>5</b>	63	11	46	23.9%
<b>6</b>	61	11	48	22.9%
<b>7</b>	55	11	48	22.9%
<b>8</b>	56	14	63	22.2%
<b>9</b>	32	2	9	22.2%
<b>10</b>	62	10	46	21.7%
<b>11</b>	45	5	24	20.8%
<b>12</b>	54	11	54	20.4%
<b>13</b>	74	23	115	20.0%
<b>14</b>	46	7	35	20.0%
<b>15</b>	66	16	81	19.8%
<b>16</b>	51	8	43	18.6%
<b>17</b>	60	8	44	18.2%
<b>18</b>	44	6	33	18.2%
<b>19</b>	68	20	113	17.7%
<b>20</b>	67	11	66	16.7%
<b>21</b>	59	8	48	16.7%
<b>22</b>	39	3	18	16.7%
<b>23</b>	52	11	70	15.7%
<b>24</b>	70	9	59	15.3%
<b>25</b>	75	16	113	14.2%
<b>26</b>	71	9	64	14.1%
<b>27</b>	69	8	60	13.3%
<b>28</b>	41	4	30	13.3%
<b>29</b>	34	1	8	12.5%
<b>30</b>	38	2	16	12.5%

#### 1956

Jane (Annie) Richardson Bauer  
Jean Jackson Day  
Gloria Deese Jones  
David L. King  
C. Ray Lewis  
Charles W. "Sonny" Lusk  
R. C. Mathis  
Ronald Maw  
Verna Cole Mitchell  
Janice Davidson Moon  
Sam Parker  
Robert E. Rampey  
Janice Polston Watts  
Paul B. Wood

#### 1957

Eddie Allred  
Ken Bauer  
Bill L. Benton  
Rex James Blankenship  
S. A. Hamby  
Carmella Crawley Johnson Coleman  
Roxanna Putman King  
Claude V. Marchbanks

#### 1958

Jo Ann McCoy Davis  
Foster D. Gentry  
Ellen Williams Hurst  
Tommy Joe Neyman  
Parkes Richey  
Joseph H. Sears  
James E. Wiggins

#### 1959

Charles E. Barnes  
Jim B. Cross

# 2007-2008 DONORS



**15 YEAR** Honored for 15 years of service to Southern Wesleyan University were Donna Pittman left, and Betty Walker.

Eugene W. Cox  
Duane Huff  
A. J. Kendrick  
Bernice Quarles Nyberg  
Edward E. Shepherd  
Dora Coile Wiggins

## 1960

Gloria Holt Joiner  
Colin E. Kelley  
Dennis R. Kendrick  
Curtis S. Lackey  
Esther Lovin Mullinax  
Mary Simmons Pressley  
Henry F. Shigley  
Frances Tomlin

## 1961

Jon O. Childs  
Kenneth Foutz  
David O. Funderburk  
Jeanette Stamey Graves  
Jim G. Green  
Geraldine Fortune Masters  
Paul Mullinax  
Bob R. Nash  
Alvin C. Newcomb  
Alice Daft Niswander  
Jim L. Schmutz

## 1962

James M. Capps  
Jeanette Mize Childs  
Morris Davis  
Janet Carriker Green  
Dorothy B. Honea  
Charles L. Joiner  
Jewell Duncan Key  
Bobbie Speer Kimble  
Jimmy J. Kimble  
Joycelyn B. Owings

## 1963

Brenda Kinley Baker  
Eulane Byrd  
Allen Connor  
Clyde Keith Connor  
Marlin B. Mull  
Sandra Randolph Jones Poppell  
J. Marvin Quarles, Sr.  
Anne Campbell Sheriff  
Lucille K. Slaughter  
Jason L. Smith  
Lorraine Midkiff Wiles

## 1964

Nancy Sparks Alexander  
Wilma Cheek Gilstrap  
Brenda Freeman Goodman  
W. Charles Graves  
Velon H. Gray  
Judy Marchant Hale  
J. Paul Hilson  
William Gordon Mullinax  
Ruth Ellen Rampey O'Shea  
Marilyn Bennett Rust  
Jimmy D. Sheriff  
Carolyn Burdette Smith  
Revel Smith  
Richard N. Sykes  
Arminia Smith Thomas

## 1965

Martha Faye Brazier Bailly  
Jewell Richards Blackstone  
Joan Allison Gray  
Gail Campbell Jones  
John E. Kiser  
Shirley Lineberry Lednum  
Larry McAlpine  
Larry S. Milstead  
Rachel Moorefield Quarles, Sr.  
Fonda Asbury Rist  
Shelby Jean Simmons  
Don D. Wood

## 1966

Alice Albertson  
Tony Baker  
Doris C. McCracken Clark  
Gareth L. Cockerill  
Vinelle Phillips Davis  
Linda Jenkins  
William P. Jenkins  
Lewis G. Lyon  
Eulalia H. Marett  
Wayne H. Rice  
C. Mickey Rickman  
Sandra Day Swift  
Michael J. Thomas  
Kathleen Atkins Thompson  
Dianne Vandiver Wallace  
William W. Wallace

## 1967

Sue Duke Barnwell  
Yvonne Wilcox Beasley  
Bob E. Black

Judy Black  
Kenneth Neal Gray  
Joy Hutcheson Klotzle  
William "Butch" H. Mobley  
Peggy Hibbs Parnell  
Martha N. Stansell  
W. Ray Thomas  
Sally Schram Wood

## 1968

Alice Church Absher  
Yvonne Herd Arrowood  
Donna Kindschi Baker  
Elizabeth Joiner Baker  
Ray Barnwell  
Jean Cleveland Bonham  
Ronald L. Brank  
Leon D. Fowler  
Reggie E. Gentry  
Sylvia Bailey Gentry  
Toy H. Head, Jr.  
Jeraline Kelly Janney  
Harry B. Mays, Jr.  
Carol Childs Milstead  
Peggy Davenport Mobley  
Harold H. Nash  
Sue Johnson Rickman  
Carol B. Sinnamon  
Robert L. Taylor  
Mary Hastings Todd

## 1969

Ruth Waud Bellis  
Sam B. Cole  
Martha Mitchell Funnell  
Faye C. LaBar  
Don W. Milstead  
Katherine Cooke Pace  
Buddy Rampey, Jr.  
Joan Wood Rampey

## 1970

Michael J. Bonham  
Joyce Stancell Dalton  
Lewis B. Edwards  
Kenneth L. Huff  
Larry Klotzle  
Tommy R. McBride  
Sherry Roper Poole  
Elizabeth A. Smith  
Milton Todd

## 1971

Joan Bell Byrum  
Wanda Staley Chalmers  
Donna Loftis Edmonds  
Preston Edmonds  
Wanda Brown Hagood  
Stephen R. Kindschi  
Carmen McCollum Neal  
Dave Pritchard  
Ralph P. Shelton

## 1972

Gary Arrowood  
Nancy S. Boone  
Donna Wilson Caldwell  
Nancy Posey Edwards  
Una R. Harvey  
Gail Cox Hurlburt  
Phyllis Gentry Kidd  
Ann B. Lowry  
David S. Medders  
Brenda Jones Putney  
James Shepard  
Robert Stricker  
John W. Wheeler  
Paul L. Wilcox

## 1973

Susan Mulz Bullard  
Susan Davis Haitchcock  
J. Arnold Luther  
Joseph S. Moorefield  
William Jonathan Payne  
Nathan Putney  
Danny R. Sharpe  
Kathy Reece Shepard  
William D. Smith  
Ronnie A. Stegall  
Sandra Knox Stricker  
Wanda Young Whitener

## 1974

David W. Cox  
Meredith G. Derr  
Ken E. Ellison  
Ron Haitchcock  
Betsy Davis Hansen  
Walton K. Holliday  
Larry E. Hooks  
Susan Cooke James  
W. Paul James  
Rolann C. Lee  
Milton Lowe  
Verna Johnson Lowe  
Ken E. Nix  
Gary B. Phaup  
Dean Sanders  
Vickie Beaver Seigler  
Karen Frisbee Sharp  
Samuel R. Swinney  
Charles A. Tegen  
D. Jonathan Watts  
Karen Young Watts  
Donald C. Wheeler  
Ken Whitener

## 1975

Sandra Haitchcock Albertson  
Charles Eddie Bryson  
Janene Jennings Bryson  
Ralph A. Campbell  
Robert Evatt  
Gilda Alexander Hendricks  
Barbara Price Jones  
Ann Wood Medders  
Theresa J. Fleet Mullinax  
Joan D. Pettigrew  
Stephen Saunders  
Kathy Robbins Stallings  
Deanna Putney Tegen  
Pamela Dean Thomason  
Robbie W. Wiggins  
Julian H. Yelton, Jr.

## 1976

Deborah Crenshaw Allgood  
Sherry Fowler Alloway  
Terry M. Beckom  
James R. Brady, Jr.  
Barbara B. Bross  
Pamela Green Dennis  
Susan Cash Hooks  
Rogers W. House  
Sheryl Tippey Link  
Deborah Sickles McKamey  
Sharon E. Pierce  
Joe Seaborn  
Mary Nalley Seaborn  
Cindy Hoyle Sherrill  
Joseph W. Stallings  
Richard A. Stanley, Jr.  
Joan Smith Summey  
Karen Bisel Swinney



**1977**

Betty J. Agnew  
 Betsy M. Arflin  
 Ruth Cox Atcheson  
 David E. Bates  
 Douglas C. Dennis  
 G. Tony A. Ellison  
 Elizabeth Fowler Hedrick  
 Elaine Ford House  
 C. E. Lawton  
 Rachel Mills Reagan  
 Shirley H. Sarlin  
 John Willett Vess  
 Jan Stamey Wiggins

**1978**

Jamella Harris Connor  
 Edna D. Curtis  
 Sherry D. Haithcock  
 Christine Nalley  
 Tim Rickman  
 Sandra Lain Robinson

**1979**

Sondra McNurlin Andrews  
 Marty L. Atcheson  
 Mary Ross Bender  
 Pam Lane Fipps  
 Noleen E. Hathaway  
 Paula Hodges  
 R. Kedar Hodges  
 Barbara Panhorst Lassiter  
 Diana Martin Lockamy  
 Joey D. Parris  
 Ronald P. Spinharney  
 Lauretta Derr Spivey, Jr.

**1980**

David M. Albertson  
 James M. Brown  
 Jeff W. Dennis  
 Debbie Waldrop Ellison  
 Russell J. Guffee  
 Rachel Preusz Gullede  
 Keith E. Hibner  
 James T. Johnson  
 Shauna Wood Jones  
 Carl A. Kerby  
 William H. Lee  
 Wayne A. Spear  
 Earl J. Spivey, Jr.

**1981**

Penny Biddix Anthony  
 Keith D. Brown  
 Sheryl Karns Dennis  
 Ken D. Dill  
 Valarie Martin Ellison  
 Kerry Hiott Harper  
 Janna Richey Lee  
 Jill Lappin Loggins  
 Martha H. Nalley  
 Teresa Pearson Newton  
 Ollie C. Smith  
 Pete H. Wood

**1982**

Myra A. Armistead  
 Jonathan P. Catron  
 Brad L. Fipps  
 Alice Foutz  
 Tina Richard Ginn, Jr.  
 Billy Ginn, Jr.  
 Raylene Rodriguez Harrell, III  
 James A. Johnson  
 Angela L. La Faille  
 Daniel N. Loggins  
 Jean Barton Macon

Samuel G. Medders  
 Ruth Gorveatte Neyman  
 Martha C. Reubert  
 Erin Rollins  
 Charles G. Wimpshrie

**1983**

Pam Hulme Bass, Jr.  
 Franklin J. Cantrell  
 Johnnie Harrell, III  
 Norman L. Holliday  
 Carolyn Meeks Hunnicutt  
 Sheryl Smith Medders  
 Fred Neyman  
 Tammy Cole Provost  
 Pam H. Schmutz  
 Victoria Brand Teague, MD  
 Dan Wood  
 Kim Williams Wood

**1984**

Jim B. Bross  
 Susan Richardson Cooper  
 Michael A. Looper  
 Robert G. Mann  
 Suzanne Bross Medders  
 Mike W. Preusz  
 Sandy McJunkin Preusz  
 Jeff T. Ray  
 Keith W. Smith  
 Douglas B. Stephens  
 Emma Lou M. Talley  
 B. Craig Williams  
 Angie Williams Wright

**1985**

Tammie McJunkin Alexander  
 Danny Boone  
 Angela Davis Bross  
 Roland E. Cavanaugh  
 Eddie A. Gray  
 Eddie Hawkins  
 Ted E. Jennings  
 Ron E. Johnson  
 Mrytle Freeman Kiefer  
 Dale D. Link  
 James H. Medders  
 Lori Hodges Ray  
 Donna Albright Rex  
 Angela M. Robinson  
 Carolyn Downey Saunders  
 Ginny Null Stine  
 Walter G. Sweet, Jr.  
 Doug D. Whitney  
 Kelly Dodgen Wood  
 Katie Wood-Ray  
 Darlene Hall Wyrick

**1986**

Ron Cheney  
 Anita Cara Cochran  
 Lisa Smith Eister  
 John D. Fralin  
 Susan Evatt Gray  
 Donald E. Howard  
 John T. Karns  
 Ed Kirkpatrick  
 Nancy B. Mann  
 Benny McJunkin  
 Joy Paine McJunkin  
 Martha Harvey Mosley  
 Jenny H. Patterson  
 Stephen A. Storey  
 L. Mark Wilcox

**1987**

Nancy Gillespie Allgood  
 Miriam F. Arnold  
 Barbara A. Berry

Alan G. Brownell  
 Ann Massey Coughler  
 Franklin D. Cooper  
 Scotty D. Gullede  
 Deborah L. Holcombe  
 Wilbur A. Key  
 Howell F. Kiefer  
 Gary L. Mosley  
 Jan Davis Peterson

**1988**

Hugh L. Boles  
 Rachel L. Bryson  
 Louis M. Carver  
 Robert L. Davis  
 Tracy Lytle Eckerley  
 Sonya B. Goodman  
 Lisa Bross Harding  
 Stephen F. Jones  
 Jill Jennings Keeran  
 Robert W. McIntyre  
 Robert A. Means  
 Daniel B. Moorehead  
 John M. Newby  
 Matthew Oglesby  
 Mukesh Rathor  
 Bruce E. Sedich  
 Jack N. Stewart  
 Mark T. Summitt  
 Kimberly Fields Westurn

**1989**

Lisa Thornberry Bright  
 Libba Porter Brownell  
 Luann Bolt Certain  
 Melissa Moore Chastain  
 Tammie Stephens Cothran  
 H. Kenneth Culbertson  
 Peter H. Dongell  
 Barbara B. Hall  
 Karla Pilgrim Hall  
 Billie Faye Morrison Harvey  
 Kenneth R. Hull  
 Carrie Hatchett Kuester  
 Daniel J. Maw  
 Donald R. McClellan  
 Kay A. McCurry  
 Joseph B. Morrow  
 George Donald Newton  
 Ruth Agner Pruitt  
 Angela L. Pruitt  
 William A. Rodriguez  
 Bill M. Slater  
 Janet Waldrop Stephens  
 Kenneth L. Thomas  
 Grace S. Towe  
 Carol Gray Wilson

**1990**

Dina Hollie Berling  
 Edward L. Bright  
 Joan Powell Brown  
 Regina Foster Carroll  
 Sandra R. Catron  
 Jon O. Childs, Jr.  
 Kimber L. Griffiths  
 Anton W. Joseph  
 Wanda R. Joseph  
 Earl Long  
 Valerie R. Ramsey  
 Sylvia Braswell Sexton  
 Robbie Ann Wade White  
 Susan McCall Whitfield  
 Charlie E. Willis

**1991**

James O. Alford  
 Douglas M. Barnett  
 Greg E. Bearden

Gene A. Best  
 Janice B. Bishop  
 Tara Causey Davis  
 Teresa Hudson Dupuis  
 Susan Poore Gentry  
 Thomas L. Harding  
 Margaret K. Hickman  
 Marlene B. McWhorter  
 James R. Owens  
 Peggy M. Smith  
 Thomas A. Smith  
 Mary C. Strickland  
 Kemuel E. Travis  
 Nevin L. Westurn  
 Darrell E. Whitaker

**1992**

Ronald David Allen  
 Dexter E. Baxley  
 David R. Bradberry  
 Joy Dodson Bryant  
 Michelle Broome Bryant  
 William D. Dill  
 Betty Butler Enlow  
 Robert P. Holcombe  
 Ray G. Klumb  
 Mary W. Ross  
 Patricia T. Thomas

**1993**

Janie Lyon Ackerman  
 Anne B. Allred  
 Cecil R. Allred  
 Raymond Lamar Bass, Jr.  
 Lance W. Black  
 Michael D. Blackwell  
 Lisa Gatlin Bryant  
 Clarence Caldwell  
 Stan W. Childs  
 Gaines C. Davis, Jr.  
 Mike Gillespie  
 Valerie C. Hunter  
 Don E. Hurlburt  
 Michael P. Keaton  
 Sally M. Lorbach  
 Benjamin L. Milstead  
 Bryan J. Owens  
 Richard T. Reynolds  
 John T. Rhodes  
 Nancy M. Turpin  
 Betty Jo Walker  
 Carole Kafer Zimmerman

**1994**

Leanne Black Broome  
 Catherine Sutton Cloy  
 Deana Styron Coker  
 John H. Dickey  
 Bradley A. Dover  
 Christopher A. Guest  
 Donald L. Harder  
 Jeanette Lowdermilk King  
 James Derrick Lemons  
 Paula Preusz Lemons  
 Rebecca Joiner McCracken  
 Horace D. Roberts  
 Ruth B. Smith  
 Cory Williams  
 Trinetta Dixon Williams

**1995**

Elaine W. Billie  
 Margaret L. Blair  
 Joseph J. DiMarco  
 David Emery  
 Patricia A. Garrison  
 Vicki Kennemore Hayes  
 Butch R. King  
 Betty Whyde McIntosh  
 James D. McIntosh

# 2007-2008 DONORS

Kimberly M. McKenzie  
Winnie L. Molloseau  
Donald W. Padgett  
Robert E. Pittman  
Brian D. Ray  
Jerry E. Riddle  
C. C. Rone, Jr. (Curt)  
Clara B. Scott  
Ronda Tucker Sheets  
Sharon L. Stark  
Brian D. Swords  
Elizabeth Williams Taylor  
Jonas M. Vassey  
Ernest D. Witherspoon  
Steve M. Womack

## 1996

Virginia Walton Anderson  
Marna Elizabeth Benton Beard  
Diana Ollis Bell  
Gayle Scott Bumgarner  
Margaret Alice Childs  
Jeffrey Keith Dacus  
Michael D. Dunsmuir  
Phillip C. Edmonds  
Kevin Todd Etheredge  
Rhonda Gentz Hamlin  
Joseph R. Holland  
Jennifer Black Keaton  
Michelle L. Lindstorm  
Ronald B. McGaha  
John P. Merck  
Marlenia Collins Murray  
Audrey Bagley Osteen  
LaCheryl C. Smith  
Betty Weathers Tucker  
Carolyn Walker  
Billy David Williams

## 1997

Susan Strollo Belrose  
Theresa M. Bouchillon  
Corrie Milstead Brayerton  
Anne G. Galloway  
Jacqueline Belton Green  
William M. Hardin  
Kenneth L. Kruse  
Melanie Pitts Martin  
Gregory L. Murray  
Van E. Williams, Jr.  
Amanda S. Young

## 1998

Robert C. Brayerton  
Elizabeth Chambers Daniel  
Billy T. Davis  
Renate Loveless Dugans  
Kenneth R. Heer  
Karla Hubbard Lever  
Brenda Partin Rock  
Steven K. Smith  
Carolyn Culp Soukup  
Michael Thompson  
Carla Dawn Whitlock  
Greg E. Young

## 1999

Lee R. Allen  
Douglas N. Ailsop  
Carl W. Callicutt  
Carolyn McKnight Cantrell  
Mary Floyd Costello  
Jim D. Hager II  
Phyllis Carroll Hendry  
Veronica E. Jones  
Debbie H. King  
Robby D. Ramey  
Brandi Alexander Roper  
Rob S. Shore  
Thomas E. Southern

## 2000

Ronald David Allen  
Tena Osteen Brown  
Dean S. Fichtel  
Doyle E. Pearson  
Marion Wayne Sexton  
Kristine K. Sports

## 2001

Debra Kauffman Alewine  
Phillip E. Baily  
Tiffany M. Belcher  
Krista M. Coots  
Donnie R. Doster  
Brandon T. Gilbert  
Laura McKenzie LeRoy  
Sadie Lee Meetze  
Frankie L. Morgan  
Jared T. Roper  
Willie L. Sullivan

## 2002

Joni Lesley Addis  
Shane A. Alexander  
John H. Atcheson  
John D. Barr  
Don Steven Beard  
Randy Belcher  
Jeffrey D. Billings  
Arlan T. Brady  
Scott Frost  
Charles E. Jackson  
Taney Hartsell Kelley  
Kelley Elaine Tegen  
Charles G. Wimphrie

## 2003

Bethany Hoogkamp Adams  
Randy Lee Bradshaw  
Mary Floyd Costello  
Dana Dralle Frost  
Anna T. Glenn  
Debbie H. King  
Virginia Kohler  
Josh F. LeRoy  
Paul G. Metzger  
Janelle Beamer Montgomery  
Chet Neil Rowan  
James R. Wilder  
Holly P. Wood

## 2004

Renee Weisenburg Atcheson  
John O. Benson  
Joy Dodson Bryant  
Alton K. Butler  
Natalie Payne Cloninger  
Joey Lenn Craig  
Roy A. DeBolt  
Joseph Elam  
Timothy Robert Elrod  
Rebecca Hardy Holt  
Eugene McKie  
Joey D. Parris  
Noralee H. Robert  
Cherie J. Rogers  
Olyn Ray Sexton  
Jenny Marie Walters  
Geraldine Denise White

## 2005

Lee R. Allen  
Sandra Salter Bradford  
Gisele Butler  
Brett Landon Cash  
Kathryn Erickson  
Melanie Bresch Gillespie  
Pamela R. Greene

Vitina Phillips Jones  
Jennifer Black Keaton  
Vernon King  
Frankie L. Morgan  
Cheryl Ann Parris  
Megan Lord Petersen  
Brandi Alexander Roper  
Dana Young Sanders  
Janet R. Simmons  
Jason Andrew Tegen  
Nancy Hudnall Waters

## 2006

Joseph F. Adams  
Elizabeth Payseur Atcheson  
Joseph Marshall Atcheson  
J. Phillip Bowers  
Scott Edward Bryson  
Allison Moore Elswick  
Jason Pierce Fellers  
Hellen Schuster Gable  
Marvin Haygood  
Bryana Renee' King  
Angela Berry Loomis  
Chad E. Peters  
David D. Reaney  
Kathryn Smith Rollins  
Cynthia D. Todd

## 2007

Lauren Ashley Blackwell  
Natalie Payne Cloninger  
Ashley Elizabeth Joiner  
Diane L. Jones  
Vitina Phillips Jones  
Melanie Pitts Martin  
Douglas A. Noel  
Cheryl Ann Parris  
Beth Stuart Roe  
Patrick B. Smith  
Paul B. Wickensimer  
Amanda S. Young

## 2008

Hellen Schuster Gable  
Melanie Bresch Gillespie  
Marvin Haygood  
Jennifer Strickland Meece  
Valerie R. Ramsey  
Kenneth Allen Wagner

## Current Student Alumni

Jess Erin Angeli  
Will Michael Austin  
Brandon Coy Brown  
Brittany Danielle Buchanan  
Heather Marie Craker  
Chloe Marie Head  
April M. Jefferson  
Travis Kameron Markovich  
Carissa Renee McNab  
Lindsey Marie Torgerson  
Jessica Laine Whitfield

## Kernersville Alumni

Alice Albertson  
David M. Albertson  
Tommy J. Albertson, Sr.  
Alexander and Patricia Mudrak Trust  
Helen J. Ammen  
Fred D. Andrews  
Sondra McNurlin Andrews  
Kenneth Bailey  
James R. Brady, Jr.  
Bryan E. Buck  
Richard Carr  
Edwin A. Chriscoe  
Jill Cooper  
Barbara Copeland

William L. Copeland  
Allene Wyrick DeWeese  
Ralph Dorsett  
Bill Eudy  
Don Farlow  
Joel Farlow  
Peggy Farlow  
Ruth Gearren  
John W. Groce  
Donna Heasley  
Ralph L. Holmes  
Cynthia LeRoy  
Sidney A. Loggins  
J. Arnold Luther  
Charlotte Maness  
Frances Miller  
Gordon Miller  
Judy McDowell Nance  
Janice Scott Page  
Judy Creed Peabody  
Wayne Peabody  
Bill Pevy  
Christine Cobb Pevy  
Darlyne S. Phillips  
Wesley Phillips  
Myrtle Cude Radford  
Leo Record  
Marietta Phillips Record  
Don Richardson  
Leola Sheffield Richardson  
Jewel Smith Richey  
Parkes Richey  
Evelyn Tucker Rickman  
James C. Smith  
Ruth Surbrook Smith  
William D Smith  
Nanie Segers Speas  
Samuel R. Swinney  
Victoria Brand Teague MD  
Leon E. Thompson  
Virginia Key Trueblood  
Carolyn Upton  
Carroll M. Upton  
Leroy Vernon  
Phyllis Watson  
Edwin Wiles  
Lorraine Midkiff Wiles  
Ernstena Phillips Parker Wood

## *Donors from South Carolina Independent Colleges and Universities*

### Unrestricted Fund Donors

Lynette L. Allston  
David W. Ames  
Aramark  
The Arkwright Foundation  
AT&T  
AT&T Matching Gifts Program  
Atlantic Coast Life Insurance Company  
Bank of America  
Bank of South Carolina  
The Barnett Foundation Trust  
Michael J. Barnett  
Henry E. Barton, Jr.  
BellSouth Corporation Matching Gifts  
Mary Rainey Belser  
Michael R. Brenan  
M. Malissa Burnette  
Byrd Family Trust  
The Campbell Consulting Group  
Joan Sasser Coker  
Colliers Keenan, Inc.  
Russell D. Cook  
CountyBank Foundation

Dargan Foundation  
 Diamond Hill Plywood Company  
 The Dickson Foundation  
 Fred F. DuBard, III  
 Eastman Chemical Company's  
 Education Aid Program  
 Elliott Davis, LLC  
 James B. Epting  
 Phillip L. Van Every Foundation  
 First Citizens  
 Sara B. Fisher  
 Elizabeth A. Fleming  
 Walter R. Griffin  
 John V. Griffith  
 Hartness International Charitable Fund  
 Hartsville Oil Mill  
 Randall C. Horn  
 Jairy C. Hunter, Jr.  
 The Jackson Family Fund  
 J. Thomas Johnson  
 Jolley Foundation  
 William H. Jones  
 Kohler Company  
 J. Wayne and Tonya P. Landrith  
 Hugh C. Lane, Jr.  
 Michael G. LeFever  
 Joab M. Lesesne, Jr.  
 John F. Lomax  
 Maddrey Foundation  
 The Malloy Foundation  
 Earl L. Mayo, Jr.  
 The McNair Law Firm Foundation  
 B.C. Moore Foundation  
 Nationwide Foundation  
 NBSC  
 Norfolk Southern Foundation  
 Phifer/Johnson Foundation  
 The Post and Courier  
 John C. Ramsey  
 Ann K. Robinson  
 Randall T. Ruble  
 C.F. Sauer Company  
 SeaLevel Systems Inc.  
 Minor M. Shaw  
 Walter D. Shealy, III  
 David E. Shi  
 Smith Development Company  
 A.O. Smith Foundation  
 Southeastern Freight Lines, Inc.  
 L.S. Spinks  
 David J. Spittal  
 SunTrust Bank  
 Charles P. Teague  
 Timken Company Charitable Trust  
 Henry N. Tisdale  
 Andrew E. and Brenda Torrence, Sr.  
 UCI Medical Affiliates of SC, Inc.  
 Vulcan Materials Company  
 The Wachovia Foundation  
 Jerry F. Wells, Jr.  
 Mitchell M. Zais

**Designated Gifts**

Excellence in Teaching Award  
 South Carolina Independent Colleges  
 & Universities, Inc. Endowment Fund  
 SCICU Scholars Program  
 Bailey Foundation  
 Bank of America  
 BB&T Charitable Foundation  
 Duke Power  
 SCANA Corp/SCE&G  
 SC Student Loan Corporation  
 Sonoco Products Company  
 UPS Foundation  
 SCICU Teaching/Learning Allocation  
 South Carolina Independent Colleges  
 & Universities, Inc.

*Businesses & Foundations*

Abercrombie & Alexander Inc., Easley, SC  
 Affordable Cleaning Service Inc., Shelby, NC  
 Alliant Techsystems Community Investment  
 Foundation, Eden Prairie, MN  
 American Family Day Corporation, Marietta, GA  
 Am-Liner East Inc., Sterling, VA  
 Artic Air Inc., Palatka, FL  
 Atchison Transportation Service Inc.,  
 Spartanburg, SC  
 Bank of America NA, Providence, RI  
 Bank of America, Charlotte, NC  
 Baseball and Books, Central, SC  
 Basic Concepts, Sandy Springs, SC  
 Benefits Assistance Inc., Greenville, SC  
 Blue Ridge Electric Coop. / Blue Ridge  
 Security Systems, Pickens, SC  
 C&S Electronics, Central, SC  
 Carithers Real Estate Inc., Anderson, SC  
 Carolina Ad Specialty, Lyman, SC  
 Carolina Datacom LLC, Greenville, SC  
 CFS, Easley, SC  
 Cliffs Management Services LLC, Travelers Rest, SC  
 Community Foundation of the Napa Valley, Napa, CA  
 Cornell Dubilier Marketing, Inc., Liberty, SC  
 Custom Decorative Mouldings Inc, Greenwood, DE  
 D. L. Scurry Foundation, Columbia, SC  
 Deluca Toyota, Ocala, FL  
 Dillon Oil Service Inc., Dillon, SC  
 Diversified Electric & Installation, Franklinville, NC  
 Dow Chemical Company, Midland, MI  
 Drs. Hare and Martin PA, Seneca, SC  
 D-Sign, Seneca, SC  
 Duckett-Robinson Funeral Home, Central, SC  
 Duke Energy, Greenville, SC  
 Durham's Automotive Inc., Six Mile, SC  
 ECP, Easley, SC  
 Edwards Auto Sales Inc., Walhalla, SC  
 First Citizens Bank, Clemson, SC  
 Five Points Medical Center, Asheboro, NC  
 Fletcher Anderson Insurance Agency Inc., Central, SC  
 Forms & Supply Inc., Charlotte, NC  
 G. W. Walker Antiques, Spring Valley, CA  
 GDG Investments LLC, Williamsburg, VA  
 Goldstein Charity Golf Tournament, Clemson, SC  
 Greater Ohio District Wesleyan Ministry  
 Center, Galloway, OH  
 Greene and Company LLP, Greenwood, SC  
 Horace Mann, Springfield, IL  
 I H Services Inc., Greenville, SC  
 Indexx Inc. Printing Solutions, Greenville, SC  
 Jean and Dean Realty, Liberty, SC  
 John Powell Investments, Walhalla, SC  
 Johnson Controls, Charlotte, NC  
 Junior Pilgrim Builders, Central, SC  
 Little Lamb Too Inc., North Baldwin, NY  
 Looper Limited Partnership, Easley, SC  
 Manufacturers Tool & Die Co. Inc., Spenceport, NY  
 Monterrey Mexican Restaurant, Clemson, SC  
 Moody Financial Services Inc., Siler City, NC  
 MST Concrete Products, Inc., Central, SC  
 New Dimensions Builders LLC., Simpsonville, SC  
 New York Life Foundation, New York, NY  
 Newton Law Firm, Clemson, SC  
 Norfolk/Southern Foundation, Princeton, NJ  
 Norman H Mathews & Regina S. Mathews  
 Family Foundation, Jacksonville, FL  
 Pancho's Mexican Restaurant, Central, SC  
 Patrick Square LLC, St. Petersburg, FL  
 Peoples National Bank, Easley, SC  
 Pepsi Bottling Group Inc., Columbia, SC  
 Piedmont Pest Control, Laurens, SC  
 Pizza Pro, Central, SC  
 Progress Energy, Princeton, NJ  
 R & E Grading Inc., Anderson, SC  
 Ram Technologies, Greer, SC  
 Real Estate Development Services LLC, Greenville, SC



**20+ YEAR** Three Southern Wesleyan University employees were recognized for reaching a milestone in their service. Pictured from left is Keith Strickland, 20 years; Wayne Stancil, 25 years; and Don Wood, 30 years.

Retirement Planning Consultants Inc., Ocala, FL  
 SC Department of Public Safety, Columbia, SC  
 Seven Oaks Pharmaceutical Corp., Easley, SC  
 Signature Architects, Clemson, SC  
 Solvi Brands LLC, Roswell, GA  
 South Carolina Independent Colleges  
 & Universities, Columbia, SC  
 South Greenville Landscaping Inc., Piedmont, SC  
 State Farm Co. Foundation, Bloomington, IL  
 Steelworks of the Carolinas, Piedmont, SC  
 Sunland Distribution Co. Inc., Greenville, SC  
 Sunmarket Travel, Owosso, MI  
 Suntrust Bank, Easley, SC  
 The Duke Energy Foundation, Princeton, NJ  
 The Gardens at Eastside, Atlanta, GA  
 The UPS Foundation, Atlanta, GA  
 Thomas Realty, Pickens, SC  
 Tigertown Graphics, Clemson, SC  
 Total Comfort Service Center Inc., Greenville, SC  
 Transplant Nursery, Lavonia, GA  
 Tri State District of the Wesleyan Church,  
 Bartlesville, OK  
 Triad Auto Specialty Inc., Greensboro, NC  
 Uncle Sams Antiques and Collectibles, Easley, SC  
 United Technologies, Hartford, CT  
 Verizon Foundation, New York, NY  
 W&W Development Company, Inc., Seneca, SC  
 Wachovia Bank Charitable F M, Winston Salem, NC  
 Wachovia Bank, N.A., Winston Salem, NC  
 Wal-Mart Foundation, Bentonville, AR  
 Whitener Pettigrew & Weaver, Clemson, SC

HFMA SC Chapter, Mount Pleasant, SC  
 High Pine Wesleyan Church, Asheboro, NC  
 High Point Area Wesleyan Men, NC  
 Liberty Wesleyan Church, Summerfield, NC  
 Mentone Wesleyan Church, AL  
 Mountain Road Wesleyan Church, Glen Allen, VA  
 Old Fort Wesleyan Church, NC  
 Pacific Southwest District, La Mesa, CA  
 Pickens County Alumni Chapter, Central, SC  
 Pickens View Wesleyan Church, SC  
 Pickens View Wesleyan Women, SC  
 Providence Wesleyan Church, Chesnee, SC  
 Reid Chapel United Methodist Church,  
 Murphy, NC  
 Retreat Baptist Church, Westminster, SC  
 Riverview Camp for Girls, Mentone, AL  
 Shady Grove Wesleyan Church, Colfax, NC  
 South Carolina Wesleyan Women, Westminster, SC  
 South Coastal District of  
 The Wesleyan Church, Conyers, GA  
 Southern Wesleyan Auxiliary, Central, SC  
 Texas Louisiana District of  
 The Wesleyan Church, Duncanville, TX  
 The Pendleton Chapter of SCGS, Seneca, SC  
 The Wesleyan Church Corporation, Indianapolis, IN  
 The Wesleyan Church Kansas District, Topeka, KS  
 The Wesleyan Church Shenandoah District, Saluda, VA  
 Trinity Wesleyan Church, Central, SC  
 Trinity Wesleyan Church Women, Central, SC  
 United Wesleyan Church, Easley, SC  
 Waite Park Wesleyan Church Missions, Minneapolis, MN  
 Wakefield Spiritual Retreat Conference, Hampton, VA  
 Westminster Wesleyan Women, SC  
 Wisconsin District Wesleyan Church,  
 Wisconsin Rapids, WI  
 WKFM South Carolina District, Piedmont, SC

*Churches/Organizations*

Affinity 4, Norfolk, VA  
 Brevard Wesleyan Church, NC  
 Brooksville Wesleyan Church, FL  
 Center for Scholarship Admin., Inc., Taylors, SC  
 Christ Church Episcopal School, Greenville, SC  
 Cornerstone Community Church, Charlottesville, VA  
 Denton Wesleyan Camp, Pasadena, MD  
 Emmanuel Wesleyan Church, Roanoke, VA  
 Faith Wesleyan Church, Greensboro, NC  
 Fellowship Baptist Church, Ocala, FL  
 Firestone Wesleyan Church, Gastonia, NC  
 First Baptist Church, Clemson, SC  
 First Wesleyan Church, Bessemer City, NC  
 First Wesleyan Church, Central, SC  
 First Wesleyan Church, Kannapolis, NC  
 Galax Wesleyan Church, VA  
 Hayworth Wesleyan Church Faith Promise,  
 High Point, NC

*Employees*

Mrs. Elaine L. Addis  
 Mrs. Joni Lesley Addis  
 Mr. Ken C. Alexander  
 Mrs. Mary Sellers Andrews  
 Mr. David J. Arute  
 Mr. Marty L. Atcheson  
 Mrs. Betty McLeskey Baskin  
 Mrs. Linda P. Batten  
 Dr. Bob E. Black  
 Mrs. Judy Black  
 Ms. Regina Kay Bolding  
 Mr. Danny Boone  
 Mrs. Nancy S. Boone

# 2007-2008 DONORS

Mr. Robert B. Bowling  
 Dr. Margaret May Boyer  
 Dr. Joe Brockinton  
 Mrs. Willa Ling Brockinton  
 Mr. Devon Randall Broome  
 Dr. Jim B. Bross  
 Mrs. Joy Dodson Bryant  
 Mrs. Missy T. Bryant  
 Mrs. Pam Nelson Burnett  
 Dr. Don R. Campbell  
 Mr. Jonathan P. Catron  
 Mrs. Sandra R. Catron  
 Dr. Shelley Ann Chapman  
 Mrs. Melissa Stansell Childs  
 Mrs. Mary Bowers Clardy  
 Dr. Keith Connor  
 Ms. Krista M. Coots  
 Mrs. Mary Floyd Costello  
 Mrs. Kim M. Cotton  
 Mrs. Joan B. Crain  
 Mrs. Liz M. Crawford  
 Mr. Walt H. Davison  
 Mr. Greg C. Day  
 Mr. Jeff W. Dennis  
 Mrs. Jane P. Dill  
 Rev. Ken D. Dill  
 Mr. John K. Duncan  
 Dr. Roland Keith East  
 Dr. Mark R. Elliott  
 Ms. Laurie G. Esler  
 Mrs. Erin Elizabeth Fellers  
 Mrs. Fran King Finch  
 Dr. Brad L. Fipps  
 Mrs. Dana Dralle Frost  
 Mrs. Edith A. Garrett  
 Mrs. Melanie Bresch Gillespie  
 Mr. Mike Gillespie  
 Dr. Mari Gonlag  
 Dr. Linda Crawley Hall  
 Dr. Steven J. Hayduk  
 Mrs. Vicki Kennemore Hayes  
 Mrs. Lori Maxie Herron  
 Mrs. Paula Hodges  
 Dr. Keith Iddings  
 Mr. Tex A. Johnson  
 Dr. Paul B. Jordan  
 Dr. Lee E. Kizer  
 Mrs. Lillie Goodman Lewis  
 Mrs. Lynn Lorene Lindsey  
 Mrs. Tracy Grant Lippard  
 Dr. Nancy B. Mann  
 Mr. Rock L. McCaskill  
 Mr. Benny McJunkin  
 Dr. Roger W. McKenzie  
 Dr. Sandra F. McLendon  
 Dr. Betty A. Mealy  
 Dr. Chuck Mealy  
 Mr. Mark David Mealy  
 Mrs. Winnie L. Molloseau  
 Mrs. Janelle Beamer Montgomery  
 Mrs. Diana Tovrea Moody  
 Mrs. Frankie L. Morgan  
 Ms. Ruth Mosley  
 Dr. Rocky Nation  
 Mrs. Khristy A. Parham  
 Mrs. Cheryl Ann Parris  
 Mr. Chad E. Peters  
 Mrs. Sherri Ann Peters  
 Mrs. Megan Lord Petersen  
 Mrs. Donna Burkam Pittman  
 Mr. Mike W. Preusz  
 Mrs. Jane Chambers Rackley  
 Dr. Mickey Rickman  
 Mrs. Beth Stuart Roe  
 Dr. Susan Taylor Rouse  
 Dr. Francisco Araujo Salles De Souza  
 Mr. Don E. Schaupp  
 Mr. Derek S. Schmitt  
 Dr. Jim L. Schmutz

Ms. Vickie L. Sexton  
 Mrs. Carol B. Sinnamon  
 Dr. Walt Bruce Sinnamon  
 Ms. LaCheryl C. Smith  
 Dr. Ronald L. Snyder  
 Dr. David J. Spittal  
 Mrs. Darlene Stancil  
 Mr. Wayne Stancil  
 Mrs. Deanna Putney Tegen  
 Mrs. Kelley Elaine Tegen  
 Mrs. Nadine B. Thompson  
 Ms. Nikki Elaine Thrasher  
 Mrs. Betty Jo Walker  
 Ms. Jenny Marie Walters  
 Dr. Harold M. Waters  
 Mr. Ed S. Welch  
 Mrs. Laurel Ann Whisler  
 Ms. Carla Dawn Whitlock  
 Rev. James E. Wiggins  
 Mr. Chris R. Williams  
 Ms. Samantha Shuntil Wilson  
 Mr. Charles Wimphrie  
 Dr. Don D. Wood  
 Mrs. Donna Finley Wood  
 Mrs. Holly P. Wood  
 Mrs. Sally Schram Wood  
 Dr. Fred Woodworth  
 Mrs. Amanda S. Young

## Friends

Ms. Grace H. Abney  
 Mr. and Mrs. James C. Abrams  
 Mr. Frank H. Adams  
 Mr. Jazy Adams  
 Mr. Ron Addis  
 Ms. Marian C. Adkins  
 Mrs. Isidore Ah Kuoi  
 Mr. Scott Akey  
 Dan and Anne Alberts  
 Mr. and Mrs. Richard J. Alderman  
 Mr. and Mrs. Lonnie J. Alewine  
 Ms. Eunice Alexander  
 Mr. Jerry Alexander  
 Mr. Leonard E. Alexander  
 Mr. and Mrs. D. Scott Allen  
 Walt and Peggy Allen  
 Mr. and Mrs. William C. Allen  
 Mr. and Mrs. Harold W. Alley, Jr.  
 Ms. Anne Gina Allman  
 Mr. and Judge Michael J. Alloway  
 Mr. Paul E. Allred, Jr.  
 Ms. Belen Ambriz  
 Mr. Joshua David Anderson  
 Ms. Mae Dell Anderson  
 Mr. and Mrs. David Wayne Andrews  
 Mr. and Mrs. Harold B. Andrews  
 Mr. and Mrs. J.D. Andrews  
 Mr. and Mrs. Jimmie Dail Andrews  
 Ms. Eileen J. Angeli  
 Mr. and Mrs. Matthew Appleby  
 Mr. and Mrs. Ed and Miriam Arnold  
 Mrs. Lucretia Arnold  
 Ms. Willie G. Ashford  
 Ms. Ruth P. Ashley  
 Mr. and Mrs. Jimmy Atkins  
 Mr. Robin Atkins  
 Mr. and Mrs. Neal Atkinson  
 Mrs. Laura Tossey Austin  
 Ms. Mary Jean Ayers  
 Ms. Irene Ayres  
 Dr. Stephen F. Babby  
 Mrs. Waydene Badgett  
 Ms. Doris S. Bailey  
 Ms. Geraldine S. Bailey  
 Mr. Mike Bailey  
 Mr. and Mrs. Donald E. Baker  
 Mr. John Michael Baker  
 Mrs. Gordon H. Bane



*Dr. David Spittal, president of Southern Wesleyan University, presents a framed picture of the sculpture "Intercession" to Nadine Thompson, who recently retired as regional administrator for the Columbia, Charleston and North Augusta learning centers. She and her husband have since relocated to North Carolina. Prior to her retirement, she was instrumental in the successful transition of the Columbia AGS Learning Center to its new location.*

Mr. and Mrs. E. Stanley Banker  
 Mr. and Mrs. Jack E. Barker  
 Ms. Megan Anne Barnard  
 Mr. and Mrs. Ronald E. Barnes  
 Mr. and Mrs. Daniel Barton  
 Ms. Ann Watson Basnight  
 Mr. and Mrs. Lenfred R. Bates  
 Mr. and Mrs. Robert Bates  
 Mr. and Mrs. Reginald B. Battle  
 Mr. Douglas L. Bayse  
 Mr. and Mrs. Richard E. Beasley  
 Ms. Sarah C. Beasley  
 Mr. and Mrs. Charles R. Beaver  
 Mr. and Mrs. Donald G. Beck  
 Mrs. Louise M. Bell  
 Mr. Vernon H. Bell  
 Ms. Myra S. Bellamy  
 Ms. Charlene Gordon Ben  
 Mr. Roland Ben  
 Ms. Mardee C. Bennett  
 Mrs. Leah A. Benthall  
 Mr. and Mrs. David Bethune  
 Ms. Almeda Bickley  
 Mr. and Mrs. Clarence Biddix  
 Mr. Ron and Dr. Laura Black  
 Dr. and Mrs. Watson H. Black  
 Mr. and Mrs. David Paul Blackburn  
 Mr. and Mrs. James Blake  
 Dr. and Mrs. Dave Blanchard  
 Mr. and Mrs. Joseph H. Blankenship  
 Mrs. Ruby R. Blankenship  
 Mr. Douglas B. Boan  
 Ms. Charlotte A. Bodenhorn  
 Mr. and Mrs. Paul D. Boel  
 Mr. Bobbie F. Bohn  
 Mr. and Mrs. Glen Bolding  
 Mr. Jonathan T. Bolding  
 Mr. Tim Bolding  
 Mrs. Sandra Bolick  
 Ms. Polly Bolton  
 Mr. Mel P. Booker  
 Mr. Trent Bouts  
 Mr. Marty Bowen  
 Mr. and Mrs. John T. Bowman  
 Ms. Ruby C. Bowman  
 Mr. Dan Boyer  
 Mr. James R. Boyer  
 Mr. and Mrs. James L. Bracey  
 Ms. Clarissa B. Bradford  
 Mr. and Mrs. Richard J. Bradford  
 Mr. James W. Bradley  
 Mrs. Opal Sheets Bradley

Dr. and Mrs. Ronald R. Brannon  
 Mr. and Mrs. Roger Breazeale  
 Mrs. Myra P. Bregger  
 Ms. Carolyn Brice  
 Dr. James C. Brice, Jr.  
 Mr. and Mrs. Glenn L. Bridges  
 Mr. and Mrs. William H. Bridwell  
 Mr. Red Brigman  
 Mr. and Mrs. Wayne C. Brigman  
 Mr. and Mrs. J. Edward Britt  
 Mrs. Rachel C. Brittain  
 Mr. and Mrs. Thomas R. Broome  
 Mr. and Mrs. James Douglas Brown  
 Mr. and Mrs. Kenneth Brown  
 Mr. O.R. Brown  
 Mr. and Mrs. William Kent Brown  
 Mr. Arthur L. Bruce  
 Mrs. Joann B. Brucke  
 Mr. and Mrs. Dwight Allen Bryant  
 Mr. and Mrs. Robin Lee Bryant  
 Mr. and Mrs. Edward Bryson  
 Mr. and Mrs. Harold A. Bryson  
 Mr. and Mrs. Russell Buck  
 Rev. Edsel Burgess  
 Mr. and Mrs. Matthew L. Burgess  
 Mr. and Mrs. Michael E. Burgin  
 Capt. and Mrs. Wilbur Burgin  
 Mr. and Mrs. James P. Burns  
 Mr. Scott D. Burrow  
 Ms. Margaret F. Busha  
 Mr. and Mrs. Ronald J. Busha  
 Mr. and Mrs. W.C. Bussa  
 Mr. and Mrs. Louis Bustos  
 Ms. Carol K. Caldwell  
 Dr. Wayne E. Caldwell  
 Rev. and Mrs. Arthur J. Calhoon  
 Mrs. Peggy Ann Camp  
 Mr. Albert M. Campbell  
 Mr. and Mrs. Ronny D. Cantrell  
 Mr. and Mrs. Robert Capdevila  
 Mr. and Mrs. B. Hugh Carpenter  
 Mr. and Mrs. W.A. Carr  
 Bill and Libba Carson  
 Ms. Joan Carter  
 Mr. and Mrs. Max G. Cash  
 Mr. and Mrs. Gray Cashatt  
 Howard and Patricia Castle  
 Mrs. Lorine Cathey  
 Ms. Patricia Jackson Chandler  
 Mr. G. Harold Chapman  
 Mr. and Mrs. J.C. Chapman  
 Mr. Matthew Taylor Charpia

Mr. and Mrs. Danny Childs  
 Mr. Nathan M. Childs  
 Mr. Samuel L. Chrisley  
 Mr. and Mrs. M.E. Christopherson  
 Mr. and Mrs. Tain-Geeng Tony Chu  
 Mr. and Mrs. William Clardy  
 Mr. Lawrence A. Clayton  
 Mr. Robert M. Clayton  
 Mr. William H. Clayton  
 Mr. and Mrs. William T. Clayton  
 Mr. Ralph Clement  
 Mr. M. Duke Cleveland  
 Mrs. Murley Coble  
 Mr. and Mrs. William R. Cochrane  
 Mr. and Mrs. W. Lee Cockerill  
 Mr. and Mrs. Thomas M. Coffey  
 Mr. and Mrs. Larry Cole  
 Mr. and Mrs. Ronney E. Cole  
 Mr. Dennis Coleman  
 Mrs. Lois B. Coleman  
 C. Roy and Pat Collins  
 Ms. Mary Coltrane  
 Mr. and Mrs. Bill Conn  
 Mr. and Mrs. Fred Connington  
 Mr. and Mrs. Jerry Conway  
 Ms. Betty J. Cooke  
 Mrs. Helen L. Cooley  
 Mr. and Mrs. Don Costello  
 Mr. and Mrs. Richard E. Cotton  
 Ms. Cindy Cox  
 Rev. and Mrs. Jerry Crain  
 Mr. G.H. Craker  
 Mr. and Mrs. Jack Crane  
 Mrs. Mary Ella Craner  
 Mr. and Mrs. Ray Crawford  
 Mr. and Mrs. Lester G. Crayton  
 Mr. Gary Crisp  
 Mr. David Cross  
 Mr. and Mrs. David J. Cross  
 Mr. and Mrs. Donnie G. Crotts  
 Ms. Nell R. Cude  
 Mr. A.B. Cumbie  
 Mr. and Mrs. Richard D. Curtis  
 Curtis Family Revocable Trust  
 Mr. and Mrs. Roy Allison Dalton  
 Mr. and Mrs. Leland H. Damon  
 Mr. and Mrs. J. Daniel Davidson  
 Ms. Mary R. Davidson  
 Ms. Evelyn C. Davis  
 Rev. Donald A. Dawalt  
 Mr. Larry Dawalt  
 Mr. Mark Dawalt  
 Mr. and Mrs. William L. Dawkins  
 Mr. C. Grayson Day  
 Mr. Terry W. Day  
 Mr. and Mrs. Ansel W. Deadwyler  
 Mr. Barry Dean  
 Mr. and Mrs. Matthew Dellinger  
 Ms. Joan L. Deloache  
 Ms. Irene W. Deneau  
 Mr. Charldon Ward Dennis  
 Ms. Mabry Dennis  
 Rev. and Mrs. James L. Denny  
 Mr. and Mrs. Samuel G. Denton  
 Mr. and Mrs. Willem Depape  
 Ms. Jessica Nichole Derr  
 Mr. and Mrs. Wayne Derr  
 Mr. and Mrs. Stanley Dickerson  
 Ms. Jennifer A. Dickey  
 Mr. and Mrs. Carl J. Dietrich  
 Mr. R.B. Dilworth  
 Mr. Daniel W. Dinger  
 Mr. and Mrs. Robert Dittman  
 Mr. Vick B. Dixon  
 Mr. and Mrs. William R. Donaldson  
 Dr. and Mrs. Herbert H. Dongell  
 Mr. and Mrs. Scott Dover  
 Dr. and Mrs. Tom Drake  
 Ms. Alice K. Drozdowicz  
 Mr. and Mrs. George M. Dueitt  
 Mr. and Mrs. Robert T. Duncan  
 Mr. Harry L. Dunlap  
 Mr. and Mrs. J.L. Dunn  
 Mr. and Mrs. Sam C. Dunn  
 Mrs. Edith Durham  
 Mrs. Elvera Duvall  
 Ms. Jessie Dye  
 Mr. James Dykhouse, CPA  
 Ms. Melinda Kay Dyson  
 Ms. Clara H. Eads  
 Mr. and Mrs. James Mitchell Eaker  
 Ms. Rebecca L. Earhart  
 Mr. and Mrs. Boyce Easter  
 Ms. Cynthia Easter  
 Mr. Jody Eckert  
 Mr. and Mrs. Edgar Eckley  
 Mr. and Mrs. Richard Edwards  
 Mr. Robert L. Edwards  
 Mr. Wesley P. Eilbert  
 Mr. Karl Ekberg  
 Mr. and Mrs. Ricky Elliott  
 Mr. and Mrs. Donald E. Ellis  
 Mr. and Mrs. Robert E. Ellis  
 Dr. and Mrs. O.D. Emery  
 Ms. Tana L. England  
 Eugene and Betty Erickson  
 Mr. and Mrs. Mark B. Erickson  
 Mr. and Mrs. Norbert J. Esser  
 Mr. Frank C. Miller Estate  
 Mrs. Lucille H. Phaup Estate  
 Mr. and Mrs. Mike Evans  
 Ms. Marian E. Evatt  
 Mr. and Mrs. James G. Evatt, Sr.  
 Mr. and Mrs. Scott R. Everhart  
 Mr. Richard Fabrizio  
 Ms. Joyce E. Fair-Ryals  
 Mr. and Mrs. Gregory L. Fant  
 Ms. Melba R. Fant  
 Harry and Wanda Farmer  
 Mr. and Mrs. Halsted B. Feaster  
 Ms. Margaret Feaster  
 Ms. Patricia C. Fekete  
 Dr. and Mrs. Gary P. Fellers  
 Mr. and Mrs. Malcolm M. Ferguson  
 Ms. Glenda White Fields  
 Ms. Rebecca Fields  
 Dan and Carol Finch  
 Ms. Marilyn S. Finger  
 Mr. and Mrs. Henry F. Fishel, Jr.  
 Mr. and Mrs. Timothy J. Flanagan  
 Mr. Ray Flasch  
 Ms. Dorothy Fletcher  
 Mr. and Mrs. John Flowers  
 Ms. Patricia Foley  
 Mrs. Verline Folwell  
 Mr. and Mrs. Winfred Forbis  
 Mr. and Mrs. Charles S. Ford  
 Mr. Robert J. Fortier  
 Mr. and Mrs. Darl L. Fowler, Jr.  
 Mr. and Mrs. Dean Fowler  
 Mrs. Monica K. Fowler  
 Mr. and Mrs. F.M. Fox  
 Mrs. Sarah L. Fraction  
 Mr. and Mrs. Thomas S. Frederick  
 Mr. and Mrs. Paul Freeland  
 Mr. and Mrs. Philip W. French  
 Mrs. Diane F. Fromme  
 Mr. and Mrs. Jason R. Fussell  
 Ms. Debora Futch  
 Mr. Bobby G. Futrell  
 Mrs. Annie Mae Lyda Gaines  
 Mr. Kevin Gais  
 Mr. and Mrs. George B. Garman  
 Mr. and Mrs. John Garmon  
 Danny and Rhonda Garrett  
 Mr. and Mrs. T. Ed Garrison  
 Ms. Geneva H. Gasperson  
 Mr. and Mrs. Joseph P. Gatlin  
 Ms. Mildred L. Gaylor  
 Mr. and Mrs. Larry Gentry  
 Mr. and Mrs. Kenneth W. George  
 Mr. and Mrs. E. Joel Gerringer  
 Mr. and Mrs. Richard F. Gettings  
 Mr. and Mrs. L. Dale Gilbert  
 Mr. Chase C. Gillespie  
 Mr. Gary A. Gillespie  
 Mr. and Mrs. David R. Gilstrap  
 Mr. Robert S. Girard  
 Ms. Wilma H. Glunk  
 Ms. Ruth J. Gonlag  
 Ms. Lucinda Gordon  
 Marvin and Joyce Gordon  
 Mr. and Mrs. Don Grant  
 Mr. Talmadge Gray  
 Mr. and Mrs. Danny Graybeal  
 Mr. and Mrs. Stanley Greene  
 Mr. James L. Greenway  
 Mr. and Mrs. Eddie Greer  
 Mr. and Mrs. Arthur L. Gregory  
 Mrs. Gene Gregory  
 Mr. and Mrs. Judson J. Gregory  
 Mr. and Mrs. John F. Griffin  
 Ms. Luzanne M. Griffith  
 Mr. and Mrs. John F. Grimes  
 Ms. Elinor M. Guinn  
 Mr. and Mrs. Dewey Gunnoe  
 Ms. Doris R. Gunsalus  
 Dr. and Mrs. Harold R. Gunsalus  
 Mr. and Mrs. James R. Gurley  
 Mr. and Mrs. Jim Gurley  
 Mr. and Mrs. Frank J. Hackl  
 Dr. Lee M. Haines  
 Mr. and Mrs. James Harold Haitcock  
 Mr. and Mrs. Anthony Todd Hall  
 Ms. Dianne H. Hall  
 Ms. Ruth M. Hall  
 Mr. and Mrs. Timothy A. Hamby  
 Mr. and Mrs. Worth A. Hamilton  
 Mrs. Patricia J. Hampton  
 Mr. and Mrs. Harold Paul Hamrick  
 Mr. and Mrs. Michael D. Hamrick  
 Ms. Peggy L. Hanchey  
 Mrs. Dorothy H. Hardin  
 Stephen and Mary Hardin  
 Mrs. Linda G. Harding  
 Mr. and Mrs. Bill Harley  
 Mr. and Mrs. Charles Harrell  
 Mr. and Mrs. Douglas Harris  
 Mr. and Mrs. Roy C. Harris  
 Mrs. Wayne Harris  
 Ms. Pamela R. Harris-Jenkins  
 Mr. and Mrs. Jacob C. Hart  
 Mr. Robert J. Hawk  
 Rev. and Mrs. Rick Haworth  
 Mr. and Mrs. Joseph F. Hayes  
 Mr. and Mrs. R.C. Hayes  
 Mr. and Mrs. J. Robin Haynes  
 Mr. and Mrs. John R. Head  
 Ms. Kay E. Hedge  
 Mr. and Mrs. Nathan Hege  
 Neal and Sandy Hegeman  
 Mr. Chad Hendley  
 Mrs. Thelma R. Hendren  
 Mr. Larry Hendrix  
 Mr. and Mrs. Ralph T. Henry  
 Mr. and Mrs. Kenneth L. Herman  
 Mr. and Mrs. Larry Herrington  
 Mr. and Mrs. L. Wayne Hickey  
 Mr. and Mrs. Hubert C. Hicks  
 Mrs. Zelma Higgins  
 Ms. Mildred High  
 Ms. Linda Highsmith  
 Mr. Chester A. Hill  
 Mr. and Mrs. C.T. Hill  
 Mr. and Mrs. Howard Hill  
 Mr. and Mrs. Gilbert H. Hine  
 Ms. Dolores A. Hiott  
 Mr. and Mrs. Timothy Hoffman  
 Mr. and Mrs. Wesley G. Holcombe  
 Mr. Edgar O. Holder  
 Mr. John David Holland  
 Mr. and Mrs. Charles Holliday  
 Mr. and Mrs. Chuck Holliday  
 Mrs. Ira J. Holliday  
 Mr. William J. Holmes  
 Mr. and Mrs. James Holtz  
 Mr. Craig Homan  
 Mr. Perry C. Hopkins  
 Mr. Eddie V. Horne  
 Mr. and Mrs. Charles P. Horton  
 Ms. Elaine A. Horton  
 Ms. Hazel Hostetter  
 Mr. and Mrs. Bill Houston  
 Mr. and Mrs. William L. Howard  
 Mr. and Mrs. Kenneth L. Howe  
 Mr. and Mrs. David W. Hoyle  
 Mr. and Mrs. Perry J. Hubbard  
 Mr. and Mrs. Robert Hughes  
 Mr. and Mrs. David Humphries  
 Mr. Olin D. Hunter  
 Mr. and Mrs. Raymond L. Hurlock  
 Mr. and Mrs. Henry A. Hutcheson  
 Dr. and Mrs. G. Earl Hydrick  
 Mr. Tom Hyll  
 Ms. Sarah H. Ingerick  
 Mr. Frank Jankowy  
 Mr. J.C. Jarrell  
 Mr. and Mrs. Forrest A. Jenkins  
 Mr. O. K. Jennings  
 Mr. Mike G. Jewell  
 Ms. Lillian Johnson  
 Ms. Patricia Johnson  
 Mrs. Ruby B. Johnson  
 Barney and NaDean Jones  
 Mr. and Mrs. Charles R. Jones  
 Mr. and Mrs. Thomas E. Jones  
 Mr. and Mrs. Tom Jones  
 Mr. and Mrs. Thomas M. Jordan  
 Ms. Beatrice D. Joseph  
 Ms. Virginia H. Kayler  
 Mr. and Mrs. Palmer E. Keaton  
 Mr. and Mrs. Daniel B. Keeran  
 Mrs. Opal M. Keeran  
 Mr. and Mrs. Franklin D. Kees  
 Rev. and Mrs. David Livingston Keith  
 Mr. James R. Keller  
 Pete and Melissa Keller  
 Mr. and Mrs. Kenneth P. Kelly  
 Mr. and Mrs. James R. Kendrick  
 Mr. and Mrs. William M. Ketchum  
 Mr. Jerry Kicklighter  
 Mrs. Melanie Kierstead  
 Mr. and Mrs. John Killian  
 Mr. John J.P. Kincaid  
 Mrs. Joanne Talbert Kindley  
 Mr. and Mrs. Fred G. King  
 Mr. and Mrs. Richard E. King  
 Mr. and Mrs. Wilton King  
 Mrs. Helen Kington  
 Mr. and Mrs. Tom Kirkpatrick  
 Mr. and Mrs. Larry Kluttz  
 Mr. and Mrs. Donald Kmiecik  
 Mr. and Mrs. Clifford Knupp  
 Mr. and Mrs. Andrew A. Kraft  
 Jim, Carol and Matthew Kridler  
 Rev. Dean and Mrs. Jean Golden Kring  
 Mr. and Mrs. Steven Kropelnicki  
 Mr. and Mrs. Rocky Kurland  
 Martin and Faye LaBar  
 Mrs. W. F. LaBar  
 Mr. and Mrs. Gary A. LaBoone  
 Mr. Tim R. Lackey  
 Mr. and Mrs. Steve P. Lambrecht  
 Peter and Lisa Lamos  
 Dale & Julia Lappin  
 Ms. Nadeen Lawrence

# 2007-2008 DONORS

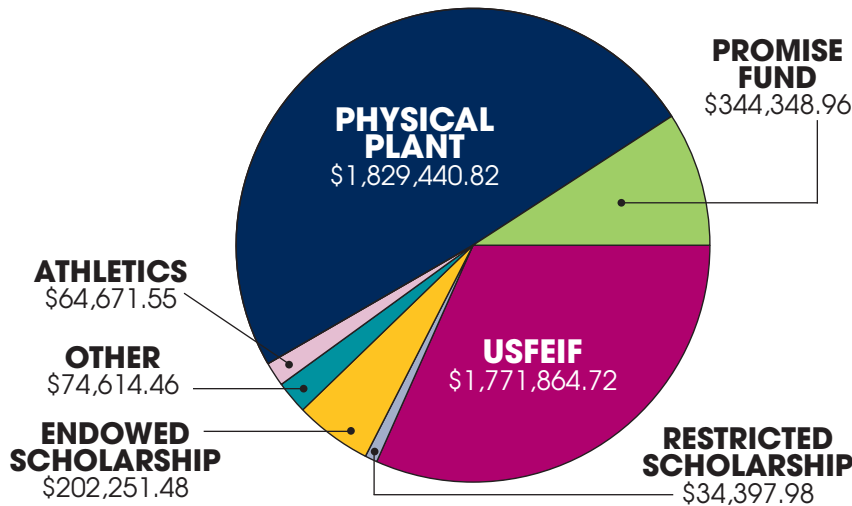
Ms. Connie Lawson  
 Mr. and Mrs. Frank Leagan  
 Mr. and Mrs. John L. Leonard  
 Ms. Margaret E. Lindsey  
 Mr. Dale Linvill  
 Mr. and Mrs. Art Lipina  
 Mr. and Mrs. Ron Lippard  
 Mr. and Mrs. J. Timothy Lipsey  
 Mr. and Mrs. Dupre Little  
 Mr. and Mrs. Richard W. Littlejohn  
 Mrs. Sue Lochmueller  
 Mr. and Mrs. James Lockaby  
 Mrs. Aline B. Loman  
 Ms. Delores Long  
 Ms. Virginia Losey  
 Art and Ruth Lovelace  
 Mr. and Mrs. Terry Lovelace  
 Mrs. Peggy Lovin  
 Mr. and Mrs. O.L. Luke  
 Mr. and Mrs. Jerry L. Lumston  
 Ms. Ashley Rose Lyseski  
 Dr. and Mrs. Wilbur J. Mahony  
 Mrs. Doralee Mann  
 Mr. and Mrs. James A. Mann  
 Mrs. Linda Mann  
 Mr. and Mrs. Robert G. Mann  
 Rev. Jeffrey A. Mansell  
 Mr. and Mrs. Jerry L. Marcum  
 Mr. and Mrs. Daniel E. Markovich  
 Mr. and Mrs. Robert N. Marley  
 Mr. and Mrs. Dan Marshall  
 Mr. Ben Martin  
 Mr. and Mrs. Clyde Martin  
 Ms. Helen Martin  
 Ms. Juanita M. Martin  
 Mrs. Anna Lou Carrington Marvin  
 Ms. Catherine S. Marvin  
 Ms. Esther F. Mason  
 Mr. and Mrs. Raymond E. Massey  
 Rev. W. A. and Mrs. Louise Massey  
 Mr. Wayne Massingill  
 Dr. and Mrs. Floyd M. Mast  
 Ms. Aggie Nora McCall  
 Mr. and Mrs. George McCallum  
 Mr. and Mrs. Thomas Weston McCallum  
 Mr. and Mrs. Alvin A. McCammon  
 Mr. Brian McCaskill  
 Rev. Ronald C. McClung  
 Mr. John W. McClure  
 Mrs. Evelyn N. McCollum  
 Mr. Lewis McCoy  
 Mr. and Mrs. Robert B. McCrary  
 Ms. Barbara McDonald  
 Mrs. Jackie McJunkin  
 Mr. James C. McKay  
 Mr. and Mrs. Walter N. McKee  
 Mr. Charles Oneal McKeown  
 Mr. and Mrs. Billy McKnight, Sr.  
 Mr. and Mrs. Steve J. McMillan  
 Ms. Deborah H. McNeill  
 Ms. Eugenia G. McNeill  
 Mr. Perry McNeill  
 Mr. and Mrs. Mike Merck  
 Mr. and Mrs. David L. Meredith  
 Ms. Mary Lou Mewborn  
 Mr. and Mrs. George Michael  
 Mr. and Mrs. Robert J. Miersma  
 Mr. and Mrs. Alfred B. Miller  
 Mr. and Mrs. Darrell Miller  
 Mr. and Mrs. Glenn N. Miller  
 Dr. Paul Rees Mills  
 Ms. Mary Misenheimer  
 Ms. Lisa Molinski  
 Mr. and Mrs. Al David Molloseau  
 Mr. and Mrs. Keith L. Moody  
 Ms. Olga E. Moody  
 Ms. Patsy M. Moody  
 Dr. and Mrs. Walter Moody  
 Ms. Karen Renee Moore

Mr. T. Curtis Moore  
 Mr. and Mrs. Tim Moore  
 Mr. and Mrs. Harry T. Morden  
 Warren and Evelyn Morgan  
 Mrs. Yvonne H. Morgan  
 Mr. and Mrs. Garland Morris  
 Mr. and Mrs. Michael C. Morrow  
 Mr. and Mrs. Ernest E. Mosley  
 Mrs. Icie Sha Mullis  
 Mr. and Mrs. Alan G. Murdoch  
 Ms. Bettye Myers  
 Mr. and Mrs. Joseph Nathan  
 Dr. Jerry Neal  
 Mr. and Mrs. Oliver A. Nealy  
 Gary and Teresa Neely  
 John and Becky Newby  
 Mr. and Mrs. William R. Newman  
 Mr. Alfred F. Newton  
 Mr. Tim Newton  
 Mr. and Mrs. Fred Nichols  
 Ms. Sarah A. Norris  
 Mr. William M. Norris  
 Ms. Judith R. Norton  
 Mr. and Mrs. Richard Norton  
 Mrs. Virginia Norwood  
 Mr. and Mrs. Albert Oldroyd  
 Ms. Michelle Lee Outlaw  
 Mr. and Mrs. Jeffrey Linn Overcash  
 Bill and Peggy Overstreet  
 Mr. W. Donald Owens  
 Mr. and Mrs. Jacob L. Oxendine  
 Mr. and Mrs. John Pace  
 Mr. W. Larry Pace  
 Mr. and Mrs. Harold V. Pacholke  
 Mr. and Mrs. E.T. Padgett  
 Mr. Joe A. Page  
 Mr. and Mrs. Kenneth Page  
 Mr. Christopher J. Painter  
 Mr. and Mrs. Rudolph Painter  
 Mrs. Norma C. Palmer  
 Mrs. O'Della Harbour Palmer  
 Ms. Bernice B. Parker  
 Mrs. Florence M. Parker  
 Ms. JoAnne Parrish  
 Mr. and Mrs. Olson Parrott  
 Ms. Joyce L. Pate  
 Mr. and Mrs. B. Patterson  
 Mr. and Mrs. James C. Patterson  
 Mr. Lewis Patterson  
 Ms. Debra E. Payton  
 Rev. and Mrs. William F. Peed  
 Mr. David R. Pelfrey  
 Mr. and Mrs. Larry B. Penley  
 Mr. and Mrs. Steve Peterson  
 Wesley and Alice Peterson  
 Mrs. Pauline R. Phillippe  
 Dr. and Mrs. Thomas E. Phillippe, Sr.  
 Mr. and Mrs. Donald C. Phillips  
 Mr. Dalton H. Pierce  
 Ms. Dorothy Pilgrim  
 W.E. and Elaine Pinion  
 Mr. V. David Pipes  
 Mrs. Frances D. Pitts  
 Mr. and Mrs. Steve Plummer  
 Mr. and Mrs. M. Paul Poole  
 Mr. Darren Poteat  
 Mrs. Eunice G. Powell  
 Arthur and Gaynelle Pressley  
 Mr. and Mrs. W. Curtis Pressley  
 Rev. and Mrs. T. Wayne Preusz  
 Dr. and Mrs. Paul Newton Prichard  
 Ms. Catherine Prillo  
 Mr. and Mrs. Hershell A. Pruitt  
 Mr. and Mrs. Steven H. Pusker  
 Dr. and Mrs. Everett Putney  
 Ms. Virgil Quisenberry  
 Mr. Max D. Rabon  
 Mr. and Mrs. Marc Ragsdale  
 Mr. and Mrs. LeRoy Rainbow

Ms. Corinne D. Rainey  
 Mr. and Mrs. David H. Ramsey  
 Mr. and Mrs. David A. Rathbone  
 Mr. and Mrs. John Ray  
 Mr. Courtney Record  
 Dr. and Mrs. Joel F. Reed  
 Mr. and Mrs. Kenneth H. Reep  
 Mr. and Mrs. Phil E. Reeves  
 Mr. and Mrs. George R. Reiter  
 Ms. Mollie C. Reubert  
 Mr. and Mrs. Larry Reynolds  
 Ms. Betty R. Rhyne  
 Ms. Linda J. Rice  
 Mr. Roger Richardson  
 Mr. and Mrs. Donald W. Roberts  
 Mr. and Mrs. James T. Roberts  
 Ms. Jane V. Roberts  
 Mr. and Mrs. Alvin K. Robinson  
 Ms. Marie B. Robinson  
 Ms. Terri A. Robinson  
 Mr. and Mrs. Larry R. Rogers  
 Ms. Rebecca Rogers  
 Mr. William Rogers  
 Mr. Willie S. Rogers  
 Ms. Leeann Rose  
 Mr. and Mrs. John B. Ross  
 Larry and Renee Roughton  
 Mr. and Mrs. Joseph F. Rowland  
 Dr. and Mrs. George M. Rupp  
 Mr. Wally Russell  
 Ms. Aimee Sackett  
 Ms. Nanette G. Sackett  
 Mr. and Mrs. Ralph A. Saczawa  
 Ms. Priscilla Sanders  
 Mr. and Mrs. Richard Saydah  
 Rev. and Mrs. Paul Schantz  
 Rev. Gene Schenck  
 Mr. and Mrs. Robert J. Schupp  
 Mr. Melvin Scott  
 Ms. Nancy S. Scruggs  
 Mr. and Mrs. Kevin M. Seal  
 Ms. Carolyn Dark Setzer  
 Mr. and Mrs. Charles William Sexton  
 Mr. George F. Shaffer  
 Ms. Karen M. Shamburg  
 Ms. Kathy Sheppard  
 Mr. and Mrs. Donald Shirley  
 Mr. and Mrs. Glenon A. Simpson  
 Ms. Betty Sims  
 Ms. Melissa M. Sinclair  
 Dr. Brenda B. Singleton  
 Mr. Edward Michael Sioma  
 Ms. Dorothy C. Skelton  
 Mr. and Mrs. Samuel H. Slaughter  
 Mr. and Mrs. C.E. Sloan  
 Mr. and Mrs. Claude L. Smethers  
 Ms. Billie R. Smith  
 Ms. Cora Lee Smith  
 Mr. Donald J. Smith  
 Mr. and Mrs. Enoch Smith  
 Mr. Lou Smith  
 Senator Nell Smith  
 Mr. and Mrs. Robert Smith, Sr.  
 Robert E. and Julia A. Smith  
 Ms. Thelma Smith  
 Mr. William A. Smith  
 Mr. and Mrs. William L. Smith  
 Mr. Gary W. Southern  
 Mr. and Mrs. Bill Spangler  
 Mr. Luke Sparrow  
 Mr. and Mrs. Morgan Spiller, Jr.  
 Mrs. Donna L. Spittal  
 Mrs. Irene Stack  
 Mr. Levon Stack  
 Mr. and Mrs. Sidney D. Stallings  
 Mrs. Faye B. Stamey  
 Mr. and Mrs. T.B. Stancell  
 Mrs. Avahlee G. Stanley  
 Mr. and Mrs. Daniel Troy Stanley

Ms. Susan N. Starr  
 Mrs. Karen G. State  
 Mr. Mark Steadman  
 Rev. and Mrs. Michael Stepp  
 Mr. and Mrs. Bryan Stewart  
 Ms. Gladys Stewart  
 Mr. and Mrs. C. David Stone  
 Ms. Nancy P. Stone  
 Mr. Tony Storm  
 Mr. and Mrs. Leonard D. Stowe  
 Ms. Carol J. Sullivan  
 Ms. Lillie M. Sullivan  
 Mr. and Mrs. Charles E. Summey  
 Mr. and Mrs. Grover F. Summey  
 Mr. Ralph E. Summey  
 Mr. and Mrs. William J. Summey  
 Ms. Elizabeth G. Suri  
 Mr. Frank C. Suter  
 Mr. and Mrs. Steve Sutherland  
 Mrs. Ruth M. Sweeney  
 Ms. Hazel Tatum  
 Ms. Marva A. Tatum  
 Mr. and Mrs. Larry Eugene Teboe  
 Ms. Kathleen R. Tegen  
 Mr. and Mrs. Edwin D. Terres  
 Mr. James D. Terry, Sr.  
 Mr. and Mrs. Frank M. Testa  
 The Robert J. Fewell Charitable Trust  
 Mr. and Mrs. Michael F. Thomas  
 Ted and Kay Thomas  
 Mr. Arch Thomason  
 Mr. and Mrs. Mack Thomason  
 Ms. Annie Thompson  
 Herbert and Shelby Thompson  
 Ms. Patsy S. Thompson  
 Mr. Stanley Thompson  
 Ms. Audrey J. Thornton  
 Ms. Marilyn Thornton  
 Mr. and Mrs. Oscar A. Thorsland  
 Ms. Caridad C. Timmerman  
 Dr. and Mrs. W. Allan Tinsley  
 Wayne and Bonnie Tippey  
 Mr. and Mrs. Daniel Tolan  
 Rev. and Mrs. Dave M. Tolan  
 Maurice and Fern Tolan  
 Charles and Frances Tolliver  
 Dr. and Mrs. Brian Torgerson  
 Ms. Muriel G. Torgerson  
 Mr. and Mrs. Charles E. Townsend  
 Mr. and Mrs. Eugene Trammell  
 Rev. Dale E. Travis  
 Ms. Annie Tribble  
 Jeff and Karen Trogdon  
 Mr. and Mrs. Cullen Tubbs  
 LTC James V. Tucker  
 Mr. and Mrs. Arthur Turner  
 Mr. and Mrs. L.A. Turner  
 Mr. and Mrs. Huey E. Tyra  
 Mr. and Mrs. Edward Van Romer  
 Mr. and Mrs. Michael J. Vogt  
 Mr. and Mrs. Gary Voncannon  
 Terry and Vickie Wagner  
 Mr. and Mrs. John W. Waldrop  
 Mr. and Mrs. B.C. Waling  
 Rev. and Mrs. Edwin B. Wallace  
 Ms. Natalie W. Wallace  
 Mr. and Mrs. Otho G. Wallace  
 Mr. and Mrs. H. Eugene Waller  
 Rev. and Mrs. David Walters  
 Mrs. Priscilla R. Waltz  
 Mr. and Mrs. L.E. Warden  
 Ms. Jean Darden Warney  
 Mr. and Mrs. Donald L. Warren  
 Mr. and Mrs. Weston W. Warren  
 Ms. Betty Lou Washburn  
 Mr. Allen Watson  
 Mr. David Watson  
 Mr. and Mrs. Ted A. Watson  
 Ms. Barbara Watts

# Donor Giving Summary Fiscal Year 2007-2008



Mr. Lee Watts  
 Rev. Dennis Waymire  
 Dr. and Mrs. Byron K. Webb  
 Mr. and Mrs. James M. Webb  
 Mr. and Mrs. William J. Weeks  
 Dr. Theodore West  
 Paul A. and Marie C. Wheeler  
 Mr. and Mrs. Charles R. Whitburn  
 Mr. and Mrs. Eric Whitburn  
 Mr. and Mrs. Lane R. Whitfield  
 Mr. and Mrs. Michael D. Whitney  
 Ms. Barbara Widener  
 Mrs. Melinda Wilbanks  
 Mr. Steve Wilbanks  
 Mr. and Mrs. Dave Wiles  
 Mr. and Mrs. John Williams  
 Rev. and Mrs. John Williams  
 Mr. and Mrs. Larry T. Williams  
 Mrs. Winnie V. Williams  
 Mr. David Wilson  
 Mr. and Mrs. Dustin Wilson  
 Dr. and Mrs. Earle L. Wilson  
 Ms. Ellen R. Wilson  
 Dr. H.C. Wilson  
 Ms. Anne Windus  
 Mr. and Mrs. Kenneth R. Winkler  
 Mr. Coville Winsor  
 Ms. Martha R. Winsor  
 Mr. and Mrs. Gary G. Winters  
 Mr. and Mrs. Ed & Wilma Wissbroecker  
 Mr. and Mrs. Gary H. Wolfe  
 Mr. and Mrs. James H. Wolfe  
 Mr. and Mrs. Joseph M. Wolfe  
 Ms. Sharren E. Wolff  
 Mrs. Ruth S. Woo  
 Mrs. Christine Wood  
 Mr. and Mrs. Jeff Wood  
 Ms. Rebecca H. Wood  
 Mr. and Mrs. Redmond S. Wood  
 Ms. Vicki Woodling  
 Mr. and Mrs. John J. Woods  
 Mrs. Deana Woodworth  
 Ms. Ethel Wooton  
 Mr. Walter S. Wooton  
 Mr. and Mrs. Michael P. Wright  
 Ms. Linda J. Yancey  
 Mr. and Mrs. Ronald Yonek  
 Mr. C. Wayne York  
 Mr. Douglas R. Young  
 Mrs. James R. Young  
 Mrs. Lucille B. Young  
 Mr. and Mrs. Ron Zimmerman

## Trustees

Judge Sherry Fowler Alloway  
 Dr. Thomas E. Armiger  
 Mr. Bill L. Benton  
 Dr. Louise H. Carlton  
 Mr. Don L. Carr  
 Dr. E. Keith Carroll  
 Mr. Thomas H. Cayce  
 Mr. Mike Chambers  
 Rev. David Emery  
 Dr. Richard L. Emery  
 Mr. Darl L. Fowler  
 Mr. James D. Fralin  
 Dr. Melvin L. Gentry  
 Dr. Ron Haithcock  
 Dr. Kenneth R. Heer  
 Dr. Marlin R. Hotle  
 Rev. Bill D. James  
 Dr. Lowell E. Jennings  
 Mr. James H. Johnson  
 Dr. Charles L. Joiner  
 Dr. Ronald D. Kelly  
 Rev. Kerry Kind  
 Rev. Daniel E. LeRoy  
 Mr. Daniel N. Loggins

Rev. Don W. Milstead  
 Mr. George I. Newton  
 Rev. John William Ott  
 Rev. Buddy Rampey, Jr.  
 Rev. Jerry D. Rott  
 Mr. M. Lee Schenck  
 Mr. Henry F. Shigley  
 Mr. Herschel A. Smith  
 Mr. Keith W. Smith  
 Mr. Joseph W. Stallings  
 Mr. Ken Whitener

## Restricted (Annual) Scholarships

Excellence in Accounting Scholarship  
 Archippus Fund-Ministerial Scholarship  
 G.H. Allred & F.A. Mason Grad. Scholarship  
 Brank Memorial Scholarship  
 Cap Care Group, Inc. Scholarship  
 Church Matching Scholarship  
 Matthew Dellinger Business Scholarship  
 Foutz Scholarship  
 Goff Scholarship  
 Good Shepherd Ministerial Scholarship  
 Adult and Graduate Studies (AGS) Scholarship  
 Michael D. and Saranne F. Whitney Scholarship  
 Roy S. Nicholson Christian Service Scholarship  
 Parker Senior Award  
 Palmetto Scholarship  
 Rigdon Memorial Scholarship  
 Ken Scruggs Memorial Scholarship  
 Scurry Scholarship  
 Mary Alice Smith Scholarship  
 Surbrook Memorial Ministerial Scholarship  
 David L. Watts Memorial Scholarship  
 SC Wesleyan Kids for Missions Scholarship  
 SC Wesleyan Women Scholarship  
 Uebele-Dowden Scholarship  
 Wood Fund

## Endowed Scholarships

J. D. Andrews Family Endowed Scholarship  
 William Marshall Arnold, Sr. Endowed Scholarship  
 Allen Baker Memorial Endowed Scholarship

Baxter and Dovie Gibson Memorial Endowed Scholarship  
 Bross Endowment Fund  
 John H., Dora G., and Maudie Brown Endowed Scholarship  
 Buel Memorial Scholarship Fund  
 Butner Memorial Endowed Scholarship Fund  
 Stephen and Louretta Calhoun Endowed Scholarship  
 Darwin B. Camp Endowed Scholarship  
 Clyde T. and Lillian G. Bryant Endowed Scholarship  
 Esther Baker Roberts Endowed Scholarship  
 George and Grace Bross Endowed Scholarship  
 James L. Burnett Endowed Scholarship  
 April Camp Endowed Scholarship  
 Clark Camp Endowed Scholarship  
 Class of 1998 Endowed Scholarship  
 Clayton Genealogical Center Endowed Scholarship  
 Lawrence Garvin Clayton, M.D. Endowed Scholarship  
 Correll Ministerial Scholarship Fund  
 Edmond A. Cash Endowed Scholarship  
 Haskell and Emma Cleveland Family Memorial Endowed Scholarship  
 James G. Childs Memorial Endowed Scholarship  
 John F. and Ethel N. Childs Endowed Memorial Scholarship  
 Walter Thompson Cox Endowed Scholarship  
 Calvin Dennis Memorial Endowed Scholarship  
 Dillon Memorial Endowed Scholarship  
 Dongell, Elliot, Fipps Endowed Scholarship  
 Dowden-Tegen Endowed Scholarship  
 John Lee and Tarva Davis Endowed Scholarship  
 Morris and Vinelle Davis Endowed Scholarship  
 Kathleen Emblar Memorial Endowed Scholarship  
 Malcolm E. and Lois S. Ellis Endowed Scholarship  
 Gallimore Memorial Endowed Scholarship  
 General Endowed Scholarship  
 Rev. Foster D. Gentry, Sr. Endowed Scholarship  
 Melvin Gentry Endowed Scholarship  
 Ruth Goff Endowed Scholarship  
 Goizuetta Foundation Scholarship  
 \*Janet Carriker Green Endowed Scholarship  
 \*Rev. Sidney Allen and Clara Sue Hamby Endowed Scholarship

John and Thelma Hendren Endowed Scholarship  
 Hilson Student Endowed Scholarship  
 Marion Wallace Hobson Memorial Endowed Scholarship  
 Honor Thy Father and Mother Endowed Scholarship  
 House Memorial Fund  
 Larry Dean Hoyle Endowed Scholarship  
 Paul Hardin Endowed Ministerial Scholarship  
 Randall A. Hill Endowed Scholarship  
 Charlie Johnson Endowed Scholarship  
 Jimmy F. Johnson Endowed Scholarship  
 Frances and Gordon Miller/Kernersville Endowed Scholarship  
 Michael S. Ketchem Endowed Scholarship  
 Arthur and Ruth Lovelace Endowed Scholarship  
 C. Wesley Lovin Endowed Scholarship  
 Dedra C. Lewis Memorial Endowed Scholarship  
 Raymond Lawson Endowed Scholarship  
 C. V. Marchbanks Endowed Scholarship  
 \*Martin Luther Communication Scholarship  
 Mauney Scholarship Fund  
 Walker McElmoyle College Endowed Scholarship  
 Dewey O. Miller Ministerial Memorial Endowed Scholarship  
 Frances and Gordon Miller Music Scholarship  
 Morrison-Harvey Alumni Endowed Scholarship  
 Rebecca C. Marks Endowed Scholarship  
 Robert W. and Laura V. Morgan Endowment  
 Robert W. and Yvonne H. Morgan Endowment  
 Virgil A. and Mary P. Mitchell Endowed Scholarship  
 Virgil A. Mitchell Trust Fund  
 Nash Family Endowed Scholarship  
 NC West District Wesleyan Youth Endowed Scholarship  
 Neff Endowed Scholarship  
 Nellie Linder Trust  
 John M. and Rebecca J. Newby Endowed Scholarship  
 Newton Endowed Scholarship  
 Jeffrey Alan Patton Memorial Endowed Scholarship  
 B.H. & Dorothy Phaup Holiness Lecture Series Endowment  
 Gail Pierce Memorial Endowed Scholarship  
 Anita L. and Melvin K. Richardson Scholarship  
 Levi Rigdon Endowed Scholarship  
 Betty Morgan Robbins and Colbert Robbins, Jr. Endowed Scholarship  
 Stephen T. and Susan P. Rushton Endowed Encouragement Scholarship  
 Rev. Ivan L. Sisk Endowed Scholarship  
 John Storey Endowed Scholarship  
 Stanley Endowed Scholarship  
 Teacher Excellence Award  
 Rennie, Sr. and Lillian Tomlin Endowed Scholarship  
 Fonda C. Von Cannon Memorial Endowed Scholarship  
 John Wesley Memorial Scholarship  
 Miriam C. Warren Endowed Memorial Scholarship  
 Robert L. White Endowed Scholarship  
 James Ralph and Mary Louise Gurley Young Endowed Scholarship

\*New Scholarships '07-'08

SOUTHERN  
WESLEYAN  
UNIVERSITY

PO Box 1020  
Central, SC 29630  
www.swu.edu

NON PROFIT ORG  
US POSTAGE  
**PAID**  
GREENVILLE, SC  
PERMIT # 232

*Return Service Requested*

# SW MUSICAL

A musical revue and tribute to all past musical theatre shows performed at SWU

MARCH 19-21, 2009 (THURSDAY, FRIDAY AND SATURDAY) AT 7:30 PM  
NEWTON HOBSON CHAPEL AND FINE ARTS CENTER

**W**e will be celebrating the alumni of the SWU musicals, through music from each show accompanied by video, pictures, memorabilia and a reception. Have you ever been involved with a SWU musical? Do you have memorabilia, funny stories or thoughts about what the SWU musical meant to you? If so, please contact **Melanie Rowell** at (864) 644-5416 or at [mrowell@swu.edu](mailto:mrowell@swu.edu)

Please join us Saturday, March 21, for a special alumni evening of dinner and theatre. Ticket price for dinner and theatre: \$20.

Seating at 5:30 p.m.

Dinner at 6 p.m.

Play at 7:30 p.m.

Contact Joy Bryant, (864) 644-5385, in the Alumni Center for dinner/theatre tickets.

SOUTHERN  
WESLEYAN  
UNIVERSITY

www.swu.edu